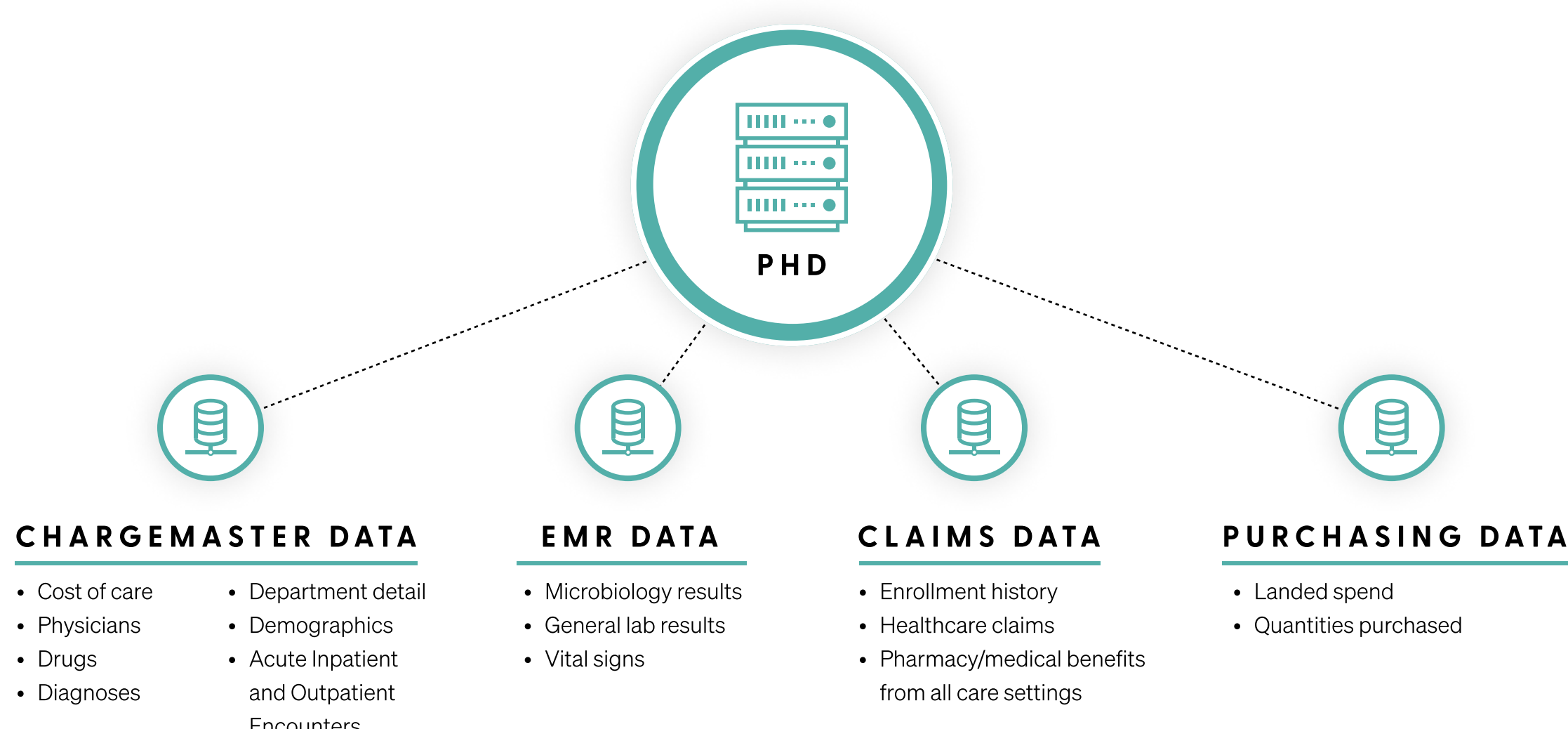


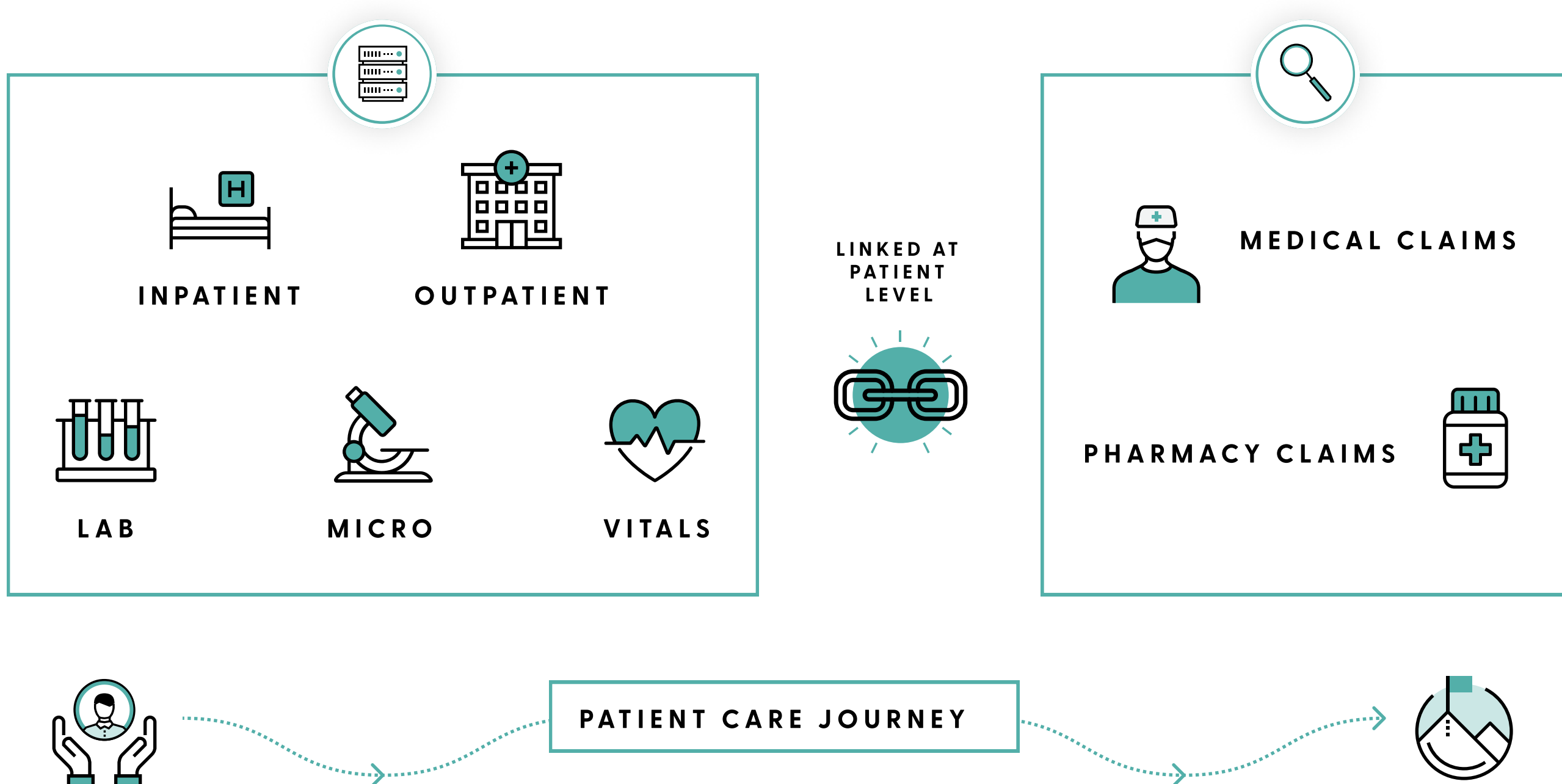
WHAT FUELS PINC AI™ HEALTHCARE DATA?

PINC AI™ Healthcare Data provides the unique opportunity to use real-world data to conduct evidence-based and population-based analyses of drugs, devices, disease states and other treatments. It's comprehensive data that answers all your questions.

How can I ensure I'm not missing data elements?
PINC AI™ Healthcare Data is fueled from:



DATA IS LINKED AT THE PATIENT ENCOUNTER LEVEL WITH THE PATIENT CARE JOURNEY IN MIND.



How can I avoid having to use multiple solutions to answer key questions?
PINC AI™ Healthcare Data is robust and built from:

MORE THAN 1,100

FACILITIES WITH COMPLETE CENSUS

'00 '05 '10 '20

20+ YEARS OF DATA COLLECTION

~260 MILLION UNIQUE PATIENTS

24 MILLION COVERED LIVES

REPRESENTING 25% OF INPATIENT U.S. DISCHARGES

OVER 11 MILLION NEW ENCOUNTERS PER YEAR SINCE 2012

120+ MILLION TOTAL VISITS

OVER 100 MILLION ENCOUNTERS PER YEAR SINCE 2012

~1 BILLION ENCOUNTERS

LAB

MICRO

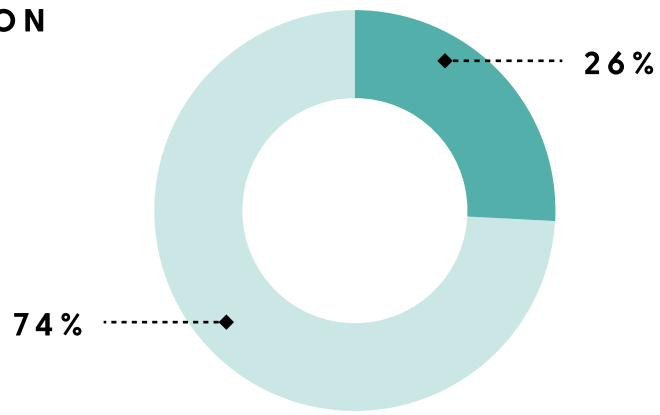
VITALS

CLAIMS DATA

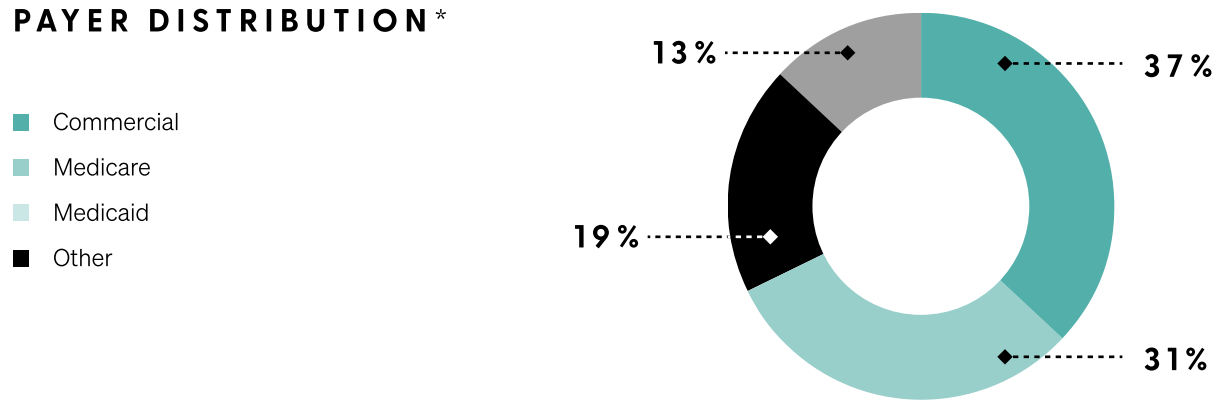
PINC AI™ HEALTHCARE DATA

as of December 2021

POPULATION SERVED*

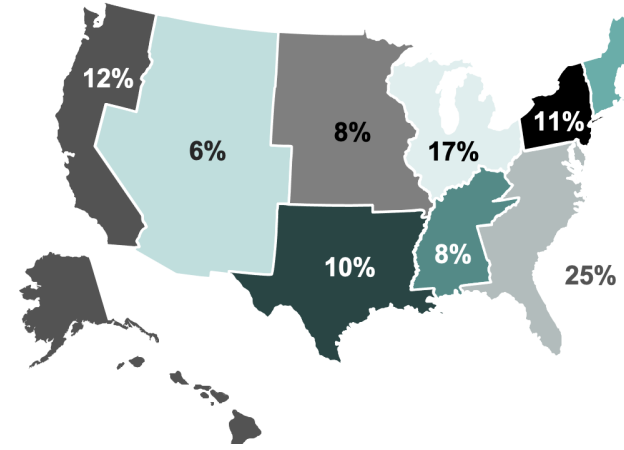


PAYER DISTRIBUTION*



REGIONAL DISTRIBUTION*

- New England
- Mid-Atlantic
- South Atlantic
- NE Central
- SE Central
- NW
- Central
- SW Central
- Mountain Pacific



Who is fueled by PINC AI™ Healthcare Data?



95%**
OF THE LARGEST PHARMACEUTICAL COMPANIES' USE PINC AI™ APPLIED SCIENCES DATA.



80%*
OF THE LARGEST MEDICAL DEVICE COMPANIES' USE PINC AI™ APPLIED SCIENCES DATA.

Find out why PINC AI™ Healthcare Data has also been used as a standard for publishing research. [Download the white paper.](#)

*2000-2020 data represented, completed on August 2021
** Based on PINC AI Applied Sciences revenue from FY20-FY21
† www.fiercepharma.com/special-report/top-20-pharma-companies-by-2020-revenue

* Based on PINC AI Applied Sciences revenue in FY21
§ www.proclinical.com/blogs/2021-8/who-are-the-top-10-medical-device-companies-in-2021