

# A Deep Dive into Premier Applied Sciences

Today, life science companies and healthcare organizations are using data to extract insights that can help advance health equity, improve research studies and clinical trials, discover new treatments, and accelerate drug development. As a result, the need for real-world data (RWD) and real-world evidence (RWE) is increasing.

The Premier Healthcare Database (PHD) provides a unique opportunity to use real-world data to conduct evidence-based and population-based analyses, with the goal to improve the future of healthcare.

## What is in the Premier Healthcare Database?



### Chargemaster Data

- Cost of care
- Physicians
- Drugs
- Diagnoses
- Department detail
- Demographics
- Acute Inpatient and Outpatient Encounters



### EMR Data

- Microbiology results
- General lab results
- Vital signs



### Purchasing Data

- Landed spend
- Quantities purchased



### Supplemental Data

- Long-term Mortality
- Social Determinants of Health (SDoH)
- Mother-Infant Linkage

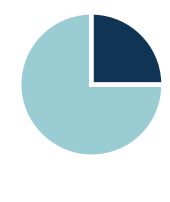
## Largest Chargemaster Database in the U.S.

'00 '05 '10 '20

20+ Years of Data Collection



~300+ Million Unique Patients

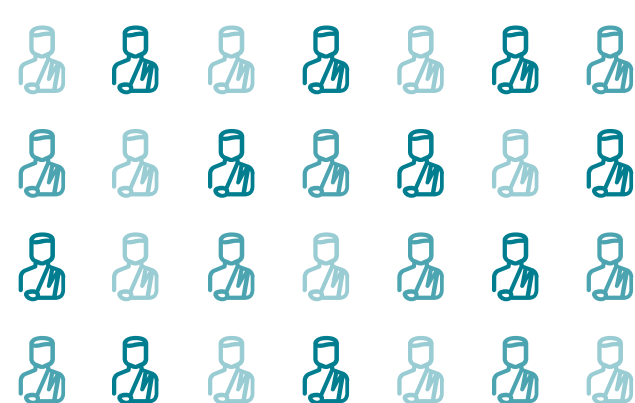


Representing 25% of U.S. Discharges



160+ Million Stays

1.3+ Billion Encounters



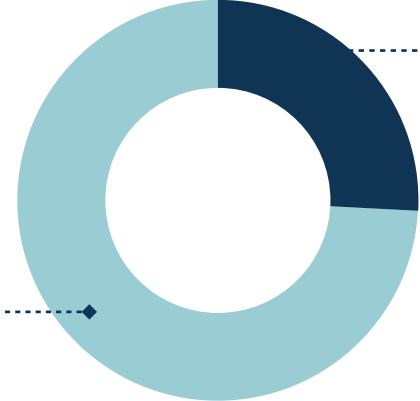
## OVERALL

## INPATIENT

## OUTPATIENT

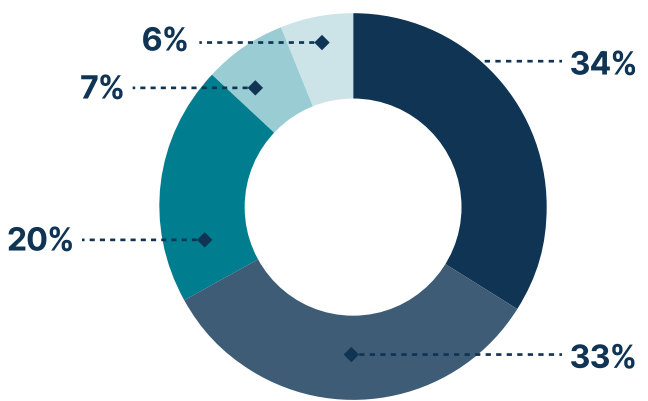
Population Served\*

- Rural
- Urban



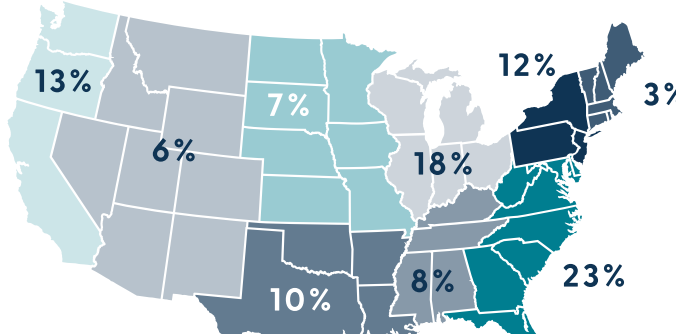
Payer Distribution\*

- Commercial
- Medicare
- Medicaid
- Self-Pay
- Other



Regional Distribution\*

- New England
- Mid-Atlantic
- South Atlantic
- NE Central
- SE Central
- NW Central
- SW Central
- Mountain
- Pacific



## Who is Fueled by Premier Healthcare Data?



95% \*\*

of the largest pharmaceutical companies\* use Premier Applied Sciences data.



80% †

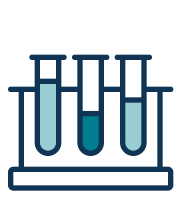
of the largest medical device companies use Premier Applied Sciences data.

## Data is linked at the patient level with the patient care journey in mind.



Inpatient

Outpatient



Lab

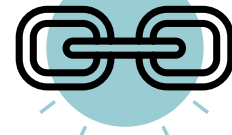


Micro



Vitals

Linked At Patient Level



Medical Claims



Pharmacy Claims



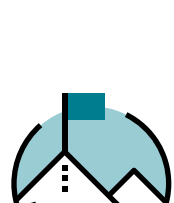
Social Determinants of Health



Mortality



Patient Care Journey

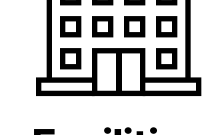


## Linked Mother-Infant Health Database

Providing insights into the mother-baby relationship to generate real-world, evidence-based and population-based analyses and, when combined with Premier's claims-linked dataset, expands visibility into the entire pregnancy journey, from prenatal to postpartum.

More Than

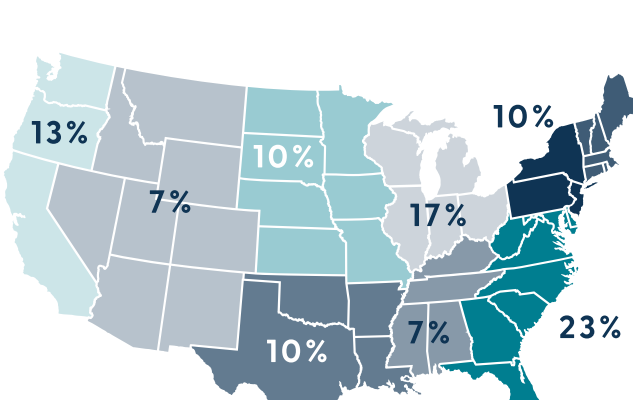
550



Facilities

Regional Distribution\*

- New England
- Mid-Atlantic
- South Atlantic
- NE Central
- SE Central
- NW Central
- SW Central
- Mountain
- Pacific



'19 '20 '21 '22 '23

5+ Years of Data Collection

~2.8 Million Mothers



~3.2 Million Infants

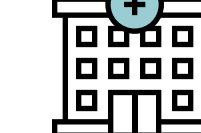


## Procedure Supply Database

One of the most comprehensive operating room databases of SKU-level data and timestamps linked to outcomes. Our unique combination of data provides insights into surgical outcomes with precise clarity of device manufacturer items utilized.

More Than

200



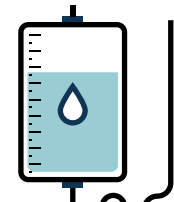
Contributing Facilities

1.7 Million Inpatient Procedures

'20 '21 '22 '23

3+ Years of Data Collection

1.2 Million Inpatients



~2.8 Million Outpatients

Nearly

4.9 Million Unique Encounters

247,000 Unique Catalog Numbers

## The Market Insights Difference

Quick and easy access to custom dashboards to view spend, quantities and trends over time at the 3-digit zip code level.



Rely on Data from 25% of all Facilities in the U.S.

Identify Market Trends with \$89B+ in Annual Spend Represented

Compare Pricing and Units Purchased From

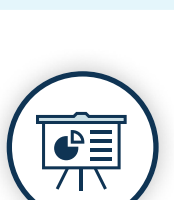
1.7M+ skus

Gather Facility-level Insights Mapped To

3-digit Zip Code

## Potential Uses of the Premier Healthcare Database To Understand Past and Current Care

Burden of Illness



Comparative Effectiveness

Outcomes Research



Health Economics Research

Risk Assessment & Predictive Modeling

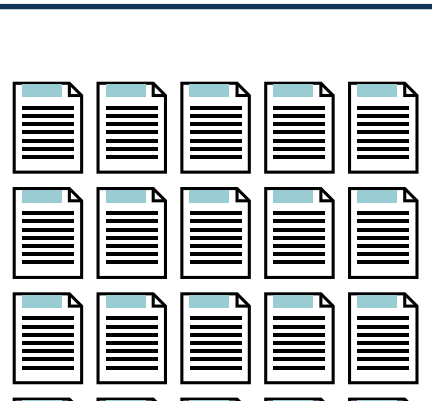


Market Trending

## The Publications Database

1,000+

Premier Publications appear in 264 scholarly, peer-reviewed journals, including JAMA®, American Journal of Cardiology® and JHEOR®.



808

Papers Published Using Premier Healthcare Data\*

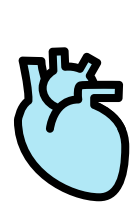
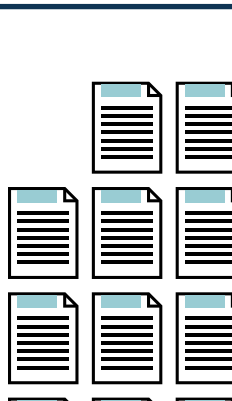
\*as of 9/6/22



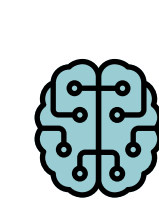
There have been

196

Premier-authored papers published between 2000 and March 2022.



The PAS team has completed ~150 prospective studies across various disease states like oncology, cardiometabolic, maternal and infant health, and brain and memory.



Find out why Premier Healthcare Data has also been used as a standard for publishing research. [Download the white paper.](#)

\* As of July 2022.

\*\* Based on Premier Applied Sciences revenue from FY20-FY21.

\* www.fiercepharma.com/special-report/top-20-pharma-companies-by-2020-revenue

\* Based on Premier Applied Sciences revenue in FY21

§ www.proclinical.com/blogs/2021-8/who-are-the-top-10-medical-device-companies-in-2021