

Violine

Dies iræ

*für Sopran, Männerchor
& Instrumentalensemble*

Kit Powell

Nr. 62 b 1997/2004

Dies iræ: ausführende Anweisungen

Chor:

Dieses Werk benutzt weitgehend eine Harmonie von Clusters. In den Chorstimmen werden diese mit rhombischen Notenköpfen gezeigt, welche die ungefähre Tonhöhe bezeichnen. Es ist sehr wichtig, dass die Chormitglieder unter sich entscheiden, wer höher, wer tiefer, etc, als den angegebenen Ton singt. Genau wie viel höher oder tiefer, ist nicht wichtig, wichtig ist, dass man vermeidet, denselben Ton wie der Nachbar zu singen.

Klavier:

Die rhombischen Notenköpfe bedeuten hier chromatische Handclusters. Leise gespielt (siehe die ersten Takte), haben diese die Qualität eines sanft gespielten Gongs, laut aber (siehe III, Takte 10 bis 24) haben sie die Brutalität einer sehr lauten Snaredrum, (welche auch in diese Sektion mitspielt).

Glissandi:

Fast alle Glissandi in den gesungenen Stimmen sind sehr leise zu spielen und sollten eine klagende, trauernde Qualität haben.

Ensemble

Querflöte
Klarinette (B) and Bassklarinette (B)
Perkussion:
Klavier
Violine
Cello

Dies iræ: Performance notes

Chorus:

For the most part this work uses a harmony of Clusters. In the choral writing clusters are notated with rhombic shaped note heads which indicate that the approximate pitch is shown. It is very important that the chorus members arrange among themselves who will sing above this, who below, etc. Exactly how much above or below (or exactly on the note) is not important, important is that one resists the temptation to sing the same notes as one's neighbour.

Piano:

Here the rhombic headed notes are chromatic hand clusters. Softly played (see opening bars) these have the quality of a soft gong but loudly played (see III, bars 10 to 24) they have the brutality of a very loud snare drum (which is also heard in this section).

Glissandi:

Most glissandi in the sung parts are to be performed softly, and should have a plaintive, keening quality.

Ensemble

Flute
Clarinet (B \flat) and Bass Clarinet (B \flat)
Percussion:
Pianoforte
Violin
Cello

Violin

Dies Irae

I

Konrad Bänninger

Kit Powell

1 *Andante* ♩ = 54 2 10 Pno. + Perc.

13 *sehr hoher Ton*
(Doppelgriff) *fp* *fp* *sf*

18 *Lento* ♩ = 48 *A tempo* ♩ = 54 10 Cl.

31 *come prima* *fp* *fp* *sf* 3

39 Vc. *ppp*

46 *come prima* *fppp*

51 *fppp* *fppp* *fppp* *sfz* 2 Vc.

59 *p* *f* 3 3

63 *fff* *ff* *fff* 2

II

1 *Celere* ♩. = 160

Violin score for movement II, starting at measure 1. The score is in 12/8 time and features various dynamics including *fpp*, *sim.*, *ff*, and *p*.

Measures 1-9: *fpp* (pianissimo), *sim.* (sostenuto). Dynamics: *fpp*, *fpp*, *sim.*

Measures 10-17: *ff* (fortissimo). Dynamics: *ff*

Measures 18-20: *p* (piano). Dynamics: *ff*, *p*

Measures 21-23: *ff* (fortissimo). Dynamics: *ff*

Measures 24-28: *ff* (fortissimo). Dynamics: *ff*

Measures 29-31: *ff* (fortissimo). Dynamics: *ff*

Measures 32-34: *p* (piano). Dynamics: *p*

Measures 35-37: *ff* (fortissimo). Dynamics: *ff*

Measures 38-40: *p* (piano). Dynamics: *p*

Measures 41-43: *ff* (fortissimo). Dynamics: *ff*

Measures 44-46: *ff* (fortissimo). Dynamics: *ff*

48 *ff* *p*

51

54 *ff* 2

59 *fff* *ff*

62 *p*

65 *f* *ff*

68 9 *f* *fff*

79 *pp* *f* *fff*

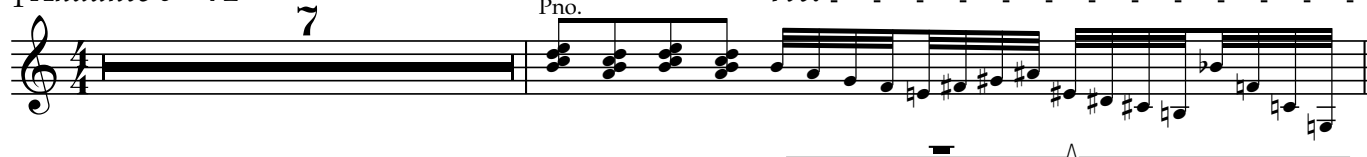
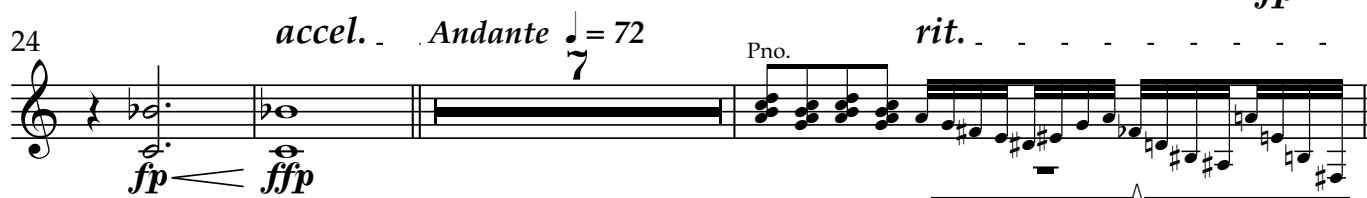
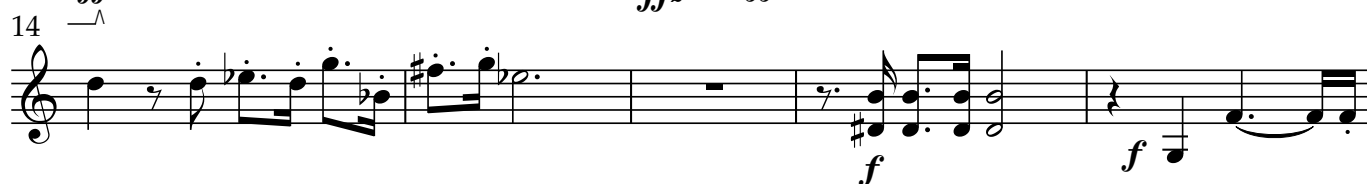
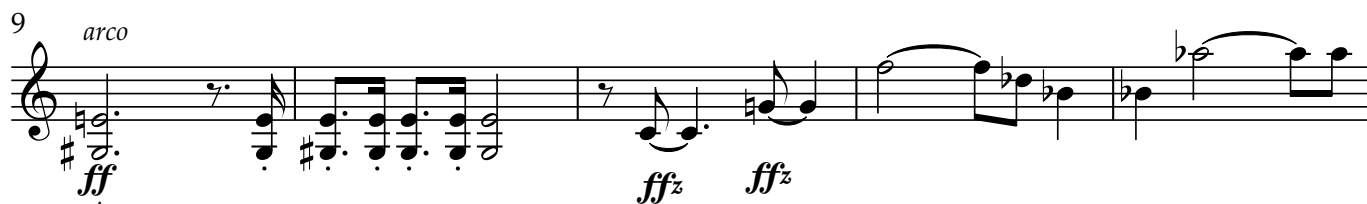
84 *pp* *f* *fpp* *pp*

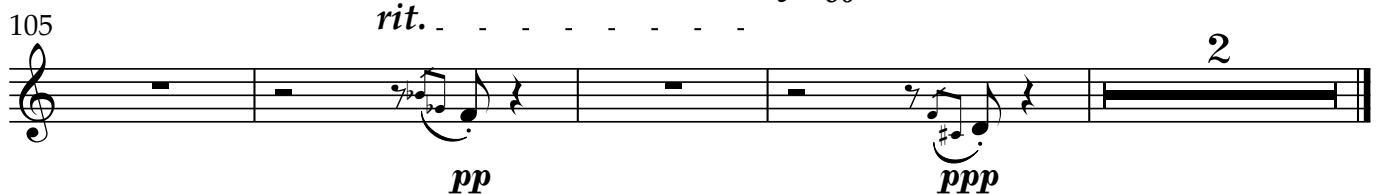
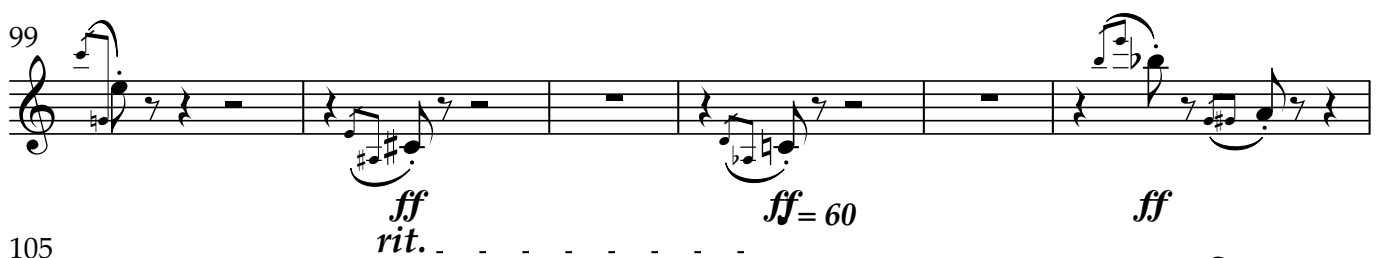
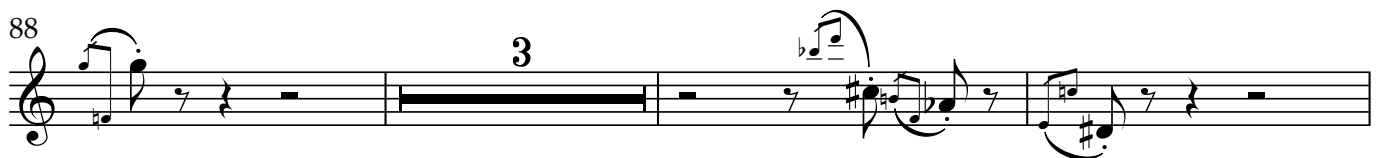
87 *pp* *fpp* *pp*

92 *pp*

96 4 3 *pp* *pp*

III

1 *Andante* ♩ = 72*Adagio* ♩ = 50

60 *Adagio* ♩ = 60*Andante* ♩ = 72

IV

Presto ♩ = 160

Measures 1-61 are shown across eight staves. The score includes various musical notations such as notes, rests, and dynamic markings. Key markings include *ff*, *fff*, *fppp*, *mf*, *pp*, *ppp*, *f*, *pizz*, and *sim.*. There are also performance instructions in German: "unregelmässigen Akzenten" (irregular accents) and "unregelmässigen Akzente" (irregular accents).

Violin score, measures 67 to 111. The music is written in treble clef with a key signature of one sharp (F#). The score includes various dynamic markings and articulations.

Measures 67-71: *arco*, *ppp*, *3*, *p*, *sfz*, *pp*.

Measures 72-77: *pp*, *f*, *pp*.

Measures 78-83: *pp*.

Measures 84-89: *p*, *mf*.

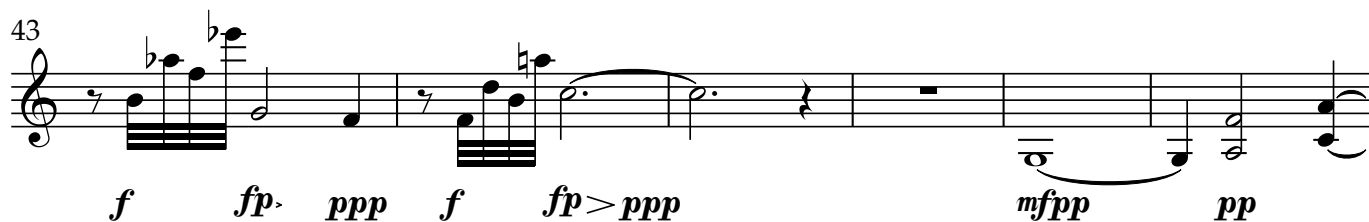
Measures 90-95: *f*, *ff*, *ff*.

Measures 96-101: *fff*, *3*.

Measures 102-107: *fff*.

Measures 108-111: *attacca*.

Violin

Presto ♩ = 1606 *molto rit.* *Lento* ♩ = 36*Presto* ♩ = 16020 *Lento* ♩ = 36

55 $\text{♩} = 72$ *Presto* $\text{♩} = 160$

60 *mf* *ff* *sf* *fp* *f* *fp*

64 *ff* *f* *ff* *f* *f* *ff* *f*

68 *f* *ff* *f* *f*

71 *Meno mosso* $\text{♩} = 90$ *Ancora meno mosso* $\text{♩} = 72$

75 *Tempo libero* *accel.* $\text{♩} = 132$ *rit.* S. Solo

T. 75 — 98 Solo Sopr. Pi - e Je - su Do - mi - ne,

93 do - na e - is re - qui - em.

98 $\text{♩} = 72$ Pno. *sim.*

101 *molto aggressivo* *fff*

Largo $\text{♩} = 54$

105 *ffff* 20 *fff* *ppp*