

Bass Trombone

Symphonic Reflections

for orchestra and two soloists

Music: Kit Powell

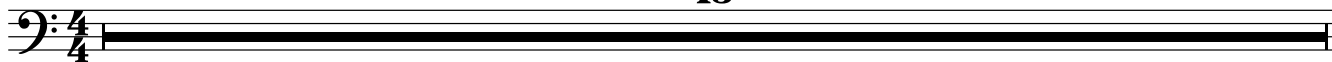
Texts: Michael Harlow

Symphonic Reflections

1

Allegro ♩ = 120

13

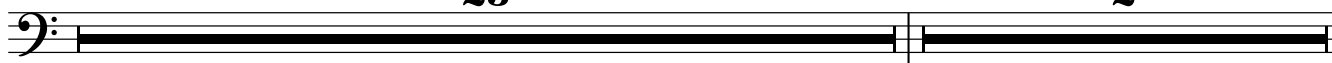
**A**

14

23

poco rit. - - -

2

**B**

39

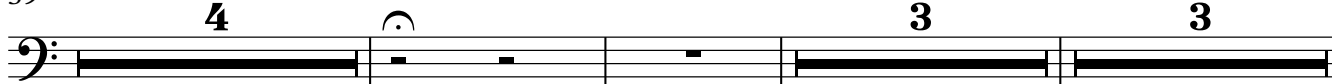
a tempo

4

poco rit. - - - *a tempo*

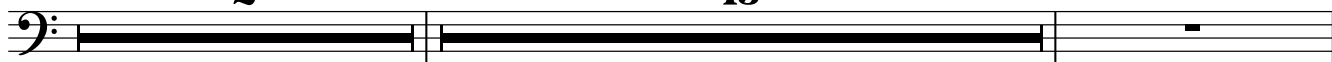
3

3

51 *rit.* - - - *a tempo*

2

13

**C***Largo* ♩ = 60

67

7

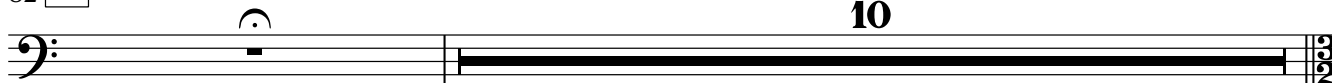
Tempo primo

♩ = 120

8

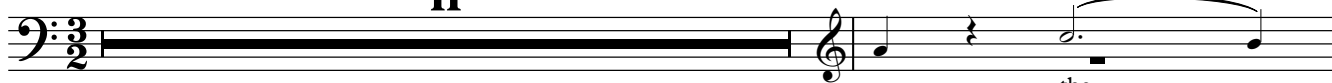
82 **D**

10

93 **E** *Andante* ♩ = 42

11

S. Solo



the _____

105



time we have left to con - si - der: _____

108 **F** *Poco più mosso* $\text{♩} = 48$ *accel.*

mfpp *mf* *pp* *mfpp* *f*

111

mfpp *f* *fpp*

115 $\text{♩} = 60$

f *fp* *mp* *f*

G *Tempo primo* $\text{♩} = 42$

f

126

f

H *Tempo primo* $\text{♩} = 120$

f

149 **I** $\text{♩} = 120$

f

164 *plunger mute* + + + + +
f < *sffz* > f

166 + + + + +
f < *sffz* > f f < *sffz* > f

169 *plunger mute* + + + + +
f < *sffz* > f f < *sffz* > *sffz* *sffz* *sffz*

J

172 *senza sord.* 19 Cast.
f < *sffz* >

K

194 Timp. 13 W.B.
f < *sffz* >

211
fpp < fpp fpp <

215
fpp fpp < fpp fpp

219 2
fpp fpp < fpp

L

225

6

Bb Cl. 1

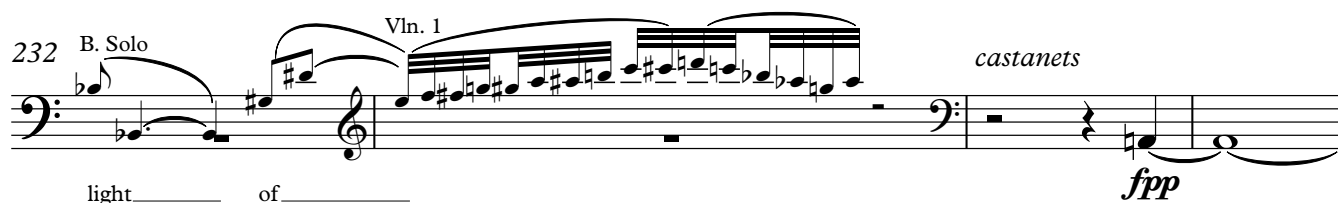


232

B. Solo

Vln. 1

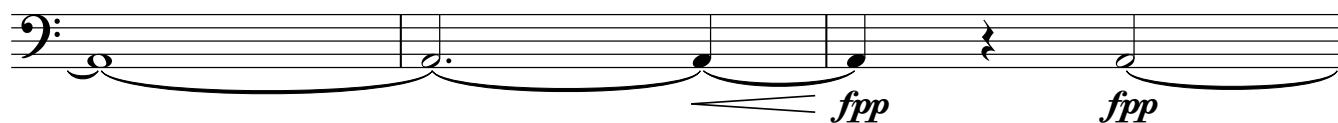
castanets



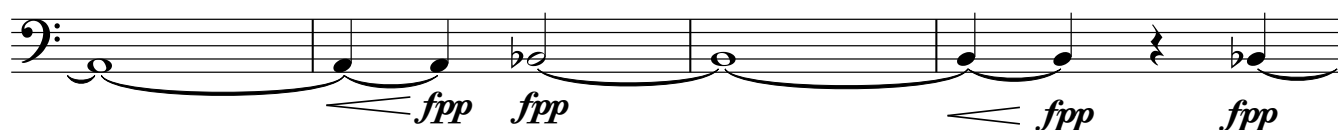
light _____ of _____

*fpp***M**

236



239



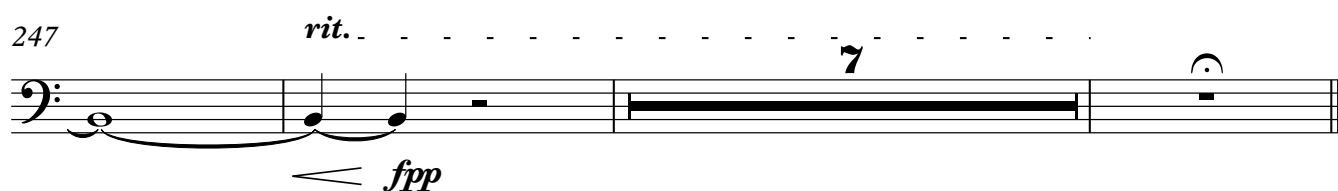
243



247

rit.

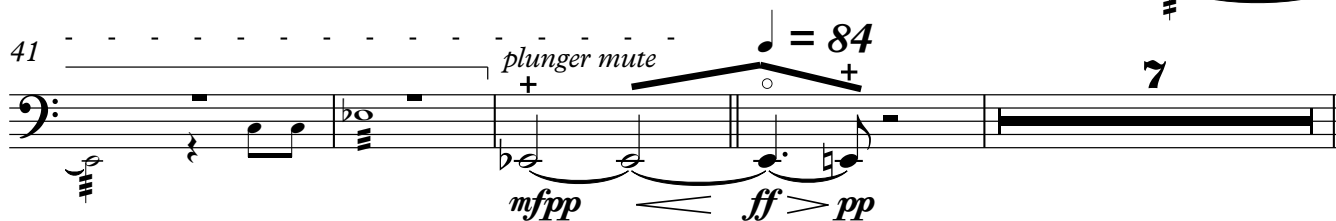
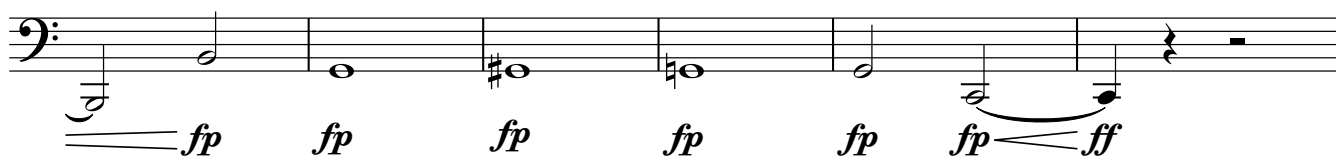
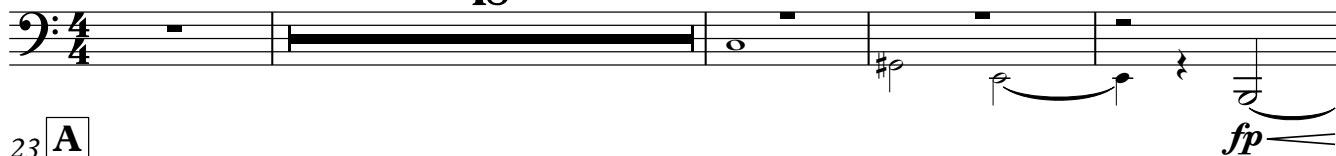
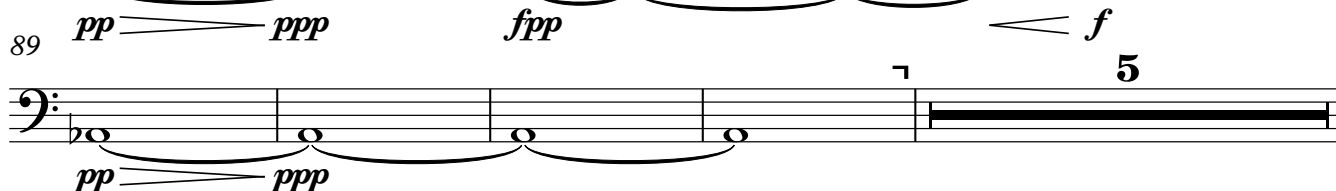
7



Andante ♩ = 60

18

Bsn. 1

**B** *Tempo primo*

98 **D** **accel.** 7 8

110 *fpp* = 84 *< fp* *< fp* *< f*

118 *ff* *p* *ffpp* *ffpp* *ffpp* *ffpp* *rit.* 3

124 **E** **A tempo** = 84 **Adagio** = 54 7 4 11

147 **F** Cbsn. S. Solo stills the day in its tracks

152 *p* *< f* 7 Tbn. 1 S. D.

164 **G** *p* *> ppp* *p* *> ppp* *p* *> ppp*

168 *p* *> ppp* *fpp* *fpp* *fpp* *ffz*

172 *rit.* 2 = 48 11

Allegro ♩ = 84

1 2 21

sffp *ff*

27 **A** Cl. 1 Fl. 1

33 Bar. Solo
cart - wheel on
f *sffp*

37 *f* *sffp* *f* *sfz*

43 **B** 3 2 *ff* *ff* *ff*

52 *ff* *sfz* *ff*

56 3 *sffp* *sfz* *p* *sffz* *p* *sffz* *p*

65 **C** 5 *sfz* *p* *mp* *mf*

73 3 *mp* *p*

← ♩ = ♩ →

D *Andante* ♩ = 84 **E**

80 **23**

D to G: solo soprano

Crot. Xyl.

107 **4**

pp < p > pp pp < p > pp pp < p > pp

113 **3**

pp < p > pp pp < p > pp

119 **F** **19**

138 **G** *Allegro* ♩ = 120

Vc. **19**

160 **H** **3** Timp.

f < ff > f f < ff > f

169 **2** *harm. gliss* **2**

f fff

175 **I** **12** *rit.* **2**

189 **J** *Largo* ♩ = 60 **9**

Fl. 1

200 Crot.

K

208

mf *f* *mf*

7

Fl. 1

219

6

C Tpt. 1

L

228

mf *f* *mf* *sff*

6

237

mfpp *mf* *pp* *f*

4

M

245

3

mp *f* *mp* *mfpp* *mp-pp*

252

mp-pp *mp-pp* *mp-pp* *mp-pp* *mp-pp* *mp-pp*

N Allegro ♩ = 120

258

sffz

Tempo rubato

262 ♩ = ca. 72

Bass Solo

3

3

Più mosso ♩ = 96

S. D.

Sop. How _____ to sur

Bass How _____

266 **rit.** - - - - -

mfpp *pp* *mfpp* *pp* *mfpp* *pp* *mfpp* *pp* *mfpp* *pp* *mfpp* *pp*

273 - - - - -

3

3

mfpp *pp* *mfpp* *f*