

2025 PRICES  
BERGEN HAVN AS



PRICELIST CRUISE  
BERGEN HAVN AS

Valid from 1<sup>st</sup> of January



# Content

- 1. Port dues ..... 2
  - 1.1. Fairway dues ..... 2
  - 1.2. Quay dues ..... 2
  - 1.3. Passenger fees ..... 2
  - 1.4. International Ship and Port Facility Security (ISPS) fees ..... 2
- 2. Services..... 3
  - 2.1. Mooring..... 3
  - 2.2. Water supply ..... 3
  - 2.3. Shore power supply ..... 3
  - 2.4. Ship wastewater ..... 3
  - 2.5. Waste handling ..... 4
  - 2.6. Bunkering ..... 4
  - 2.7. Security Package..... 4
  - 2.8. Lift and crane ..... 4
- 3. Personnel and equipment hire..... 5
  - 3.1. Hourly rates for labour in connection with supply services etc..... 5
  - 3.2. General equipment hire ..... 5
  - 3.3. Hire of port authority vessel ..... 5
- 4. REGULATIONS AND TERMS & CONDITIONS ..... 6
  - 4.1. Max. number of vessels and passengers ..... 6
  - 4.2. Bookingsystem ..... 6
    - 4.2.1. 2025..... 6
    - 4.2.2. 2026 and further ..... 6
  - 4.3. EPI – Environmental Port Index..... 7
  - 4.4. Cancellation fees..... 7
  - 4.5. Ship maintenance work when alongside..... 7
- 5. CHANGE LOG ..... 8
  - 5.1. Change log 2024 vs 2025 ..... 8

## 1. Port dues

Cruise ship port dues for 2025 will be charged at the rates outlined below.

### 1.1. Fairway dues

Cruise ships calling at Port of Bergen are obliged to pay fairway dues to Bergen Havn Farvannsforvaltning IKS, cf. § 36 of the Act relating to Harbours and Fairways.

GROUP	PRICE	UNIT
Cruise ships	NOK 0.10	Per GT, per call

Notes:

- ESI: Ships registered with the Environmental Ship Index (ESI) from the World Ports Climate Initiative are granted a discount of 20 percent if the ESI is above 30 points, and 50 percent if the ESI is above 50 points. The discount is calculated from the fee payable after deduction of any line discount. The discount is given within the validity period of the ESI certificate, and where the ESI registration is notified in advance.

### 1.2. Quay dues

Cruise ships berthed at Port of Bergen (public quay) are charged quay dues at the following rates per 24-hour period or part thereof:

SEASON	PERIOD	PRICE	UNIT	MINIMUM
Winter	01/11 – 31/03	NOK 1,50	Per GT, per 24-hour period	NOK 30 000
Spring	01/04 – 31/5	NOK 1,90	Per GT, per 24-hour period	NOK 37 500
Summer	1/06 – 30/08	NOK 2,98	Per GT, per 24-hour period	NOK 52 500
Autumn	1/9 – 31/10	NOK 1,90	Per GT, per 24-hour period	NOK 37 500

Notes:

- If a cruise ship is docked for more than 24 hours, a discount of 10% will be given based on quay remuneration.
- EPI: Quay dues for cruise ships are adjusted in accordance with the vessel's EPI score (basis after discounts)

### 1.3. Passenger fees

Passenger fees are charged for passengers making use of the port's infrastructure and terminal facilities. The fee is levied at both embarkation and disembarkation.

GROUP	PRICE	UNIT
Disembarking and embarking cruise passengers	NOK 60	Per person
Cruise passengers in transit	NOK 20	Per person

### 1.4. International Ship and Port Facility Security (ISPS) fees

Access to and use of ISPS approved port terminals at Skolten and Dokken are charged at the following rates:

GROUP	PRICE	UNIT
Cruise passengers	NOK 21	Per person

Notes:

- The charge is calculated based on number of passengers on arrival and number of passengers embarking.

## 2. Services

### 2.1. Mooring

Mooring shall be booked via Port of Bergen's operational center.

### 2.2. Water supply

Port of Bergen offers quality-assured fresh water supply services in accordance with current regulations at all its cruise-ship quays. Operation of the system, and the disconnecting/connecting of hoses, shall only be performed by Port of Bergen personnel. Any violation will result in compensation liability for equipment and cleaning.

Supply of water is charged as follows (excl. VAT):

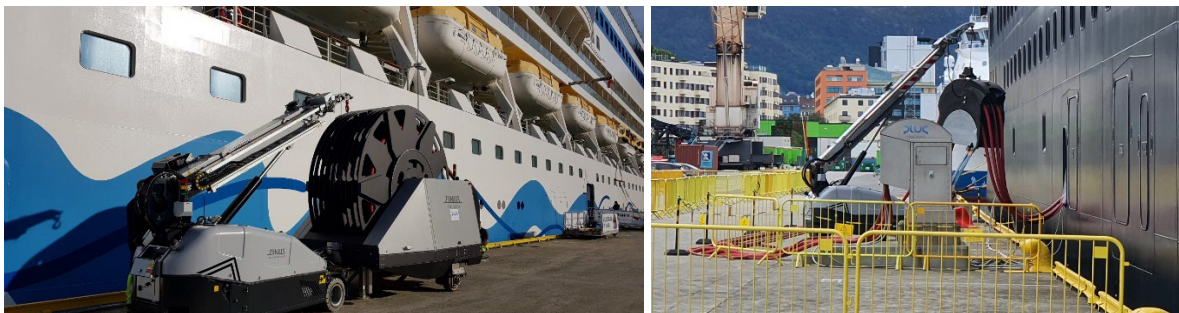
TIME PERIOD	PRICE	UNIT	MINIMUM
Weekdays within regular working hours	NOK 27	Per tonne	NOK 1 000 per delivery
<i>Surcharges outside regular working hours (07-15)</i>			
- 15:00 – 21:00	NOK 445	Per hour	
- 21:00 – 07:00	NOK 890	Per hour	
- Saturdays, Sundays, and public holidays	NOK 890	Per hour	

Notes:

- If water supply services are cancelled after personnel have been called out, a fee of two working hours will be charged (see separate regulations in pt. 3.1)
- Hosing down of tanks is charged at standard rates.

### 2.3. Shore power supply

Port of Bergen offers shore power connection for up to three cruise ships simultaneously (high voltage) at its main cruise quay facilities. From 2025 season, low voltage connection will be provided for smaller cruise vessels. Port of Bergen and the energy supplier Eviny have established a separate company – Plug Bergen AS – through which the sale of shore power is managed.



For any technical inquiries, please contact by mail: [operations@plugport.no](mailto:operations@plugport.no)

For further information and prices, please click at: <https://plugport.no/location/bergen/>

### 2.4. Ship wastewater

At our cruise berths in Skolten and Bontelabo, cruise ships can now deliver grey/black water directly into Bergen renovation system.

The use of this system is based on selfservice and is free where it is available at above mentioned berths. For user guide and further information, please contact [havnevakt@bergenhavn.no](mailto:havnevakt@bergenhavn.no).

## 2.5. Waste handling

Waste handling fees are set in accordance with the Pollution Control Act, Chapter 20, relating to the waste and cargo residue delivery and reception by ships.

Cruise ship, per call: NOK 400

Cruise ships undertake to arrange their own waste handling services. The fee covers registration and administration only.

Waste containers shall be collected immediately after the vessel has departed. Containers not collected will incur a fee of NOK 1000 per unit, per day.

## 2.6. Bunkering

Bunkering vessels/barges etc. moored on the outside of the vessels to which they are providing services, are currently not subject to quay dues.

Cruise ship bunkering operations shall only be carried out by Port of Bergen's approved suppliers. (Requires risk assessments and a review of the port's and the city's emergency preparedness plan for the external environment.)

Yokohama fenders and emergency equipment for the bunkering operation are available for hire from Port of Bergen.

## 2.7. Security Package

Port of Bergen offer security services in port including security equipment and personnel.

We can provide 2 fully staffed security packages at the same time, and support with extra personnel if necessary. This can reduce waiting time for your passengers.

Categories and prices are listed below.

Prices at weekdays within regular working hours:

TYPE	PRICE	UNIT
Passenger X-ray <sup>1)</sup>	NOK 3 675	Per hour
Baggage <sup>2)</sup>	NOK 2 100	Per hour
Additional Security Officers <sup>3)</sup>	NOK 890	Per hour
<i>Surcharges outside regular working hours (07-15)</i>		
- 15:00 – 21:00	NOK 445	Per hour
- 21:00 – 07:00	NOK 890	Per hour
- Saturdays, Sundays, and public holidays	NOK 890	Per hour

Notes:

- <sup>1)</sup> Security checks of passengers and hand luggage which consists of 4 security officers, 1 baggage X-ray, 1 metal arch and 1 handheld detector
- <sup>2)</sup> Security checks of luggage which consists of 2 security officers and 1 baggage X-ray
- <sup>3)</sup> Extra Security officers for security duties related to the ISPS code within the port facility

## 2.8. Lift and crane

Ship cranes or other cranes shall only be used if approved by Port of Bergen. Written permission can be obtained by e-mailing [havnevakt@bergenhavn.no](mailto:havnevakt@bergenhavn.no) or calling +47 95989980.

Fees (excl. VAT) for use of lift and crane at the port's premises:

TYPE	PRICE	UNIT	MAXIMUM
Mobile crane / truck-mounted crane	NOK 300	Per hour	NOK 3 000
Lift / cherry picker	NOK 500	Per 24-hour period	

Notes:

- Failure to obtain permission will incur a fee of NOK 5 000 per 24-hour period.

### 3. Personnel and equipment hire

#### 3.1. Hourly rates for labour in connection with supply services etc.

Hourly rates for various work carried out by Port of Bergen's own operational staff (excl. VAT):

TYPE	TOTAL	UNIT
Labour, weekdays 07-15	NOK 890	Per hour
Labour, weekdays 15-21	NOK 1 335	Per hour
Labour, weekdays after 21:00 & at weekends	NOK 1 780	Per hour
Labour, public holidays	NOK 1 780	Per hour

Notes:

- Minimum 2 hours.
- Emergency preparedness: 50% of standard remuneration.

#### 3.2. General equipment hire

Port of Bergen offer its users the following equipment for hire:

Rates within regular working hours (0700-1500), excl. VAT:

TYPE	PRICE	UNIT	EXTRA CHARGE
Gangway	NOK 4 000	Per 24-hour period	Transport and personnel
Truck with crane and driver <sup>1)</sup>	NOK 1 700	Per hour	
Forklift	NOK 1 400	Per hour	Transport and personnel
Sweeping machine with driver <sup>1)</sup>	NOK 1 700	Per hour	
Yokohama fenders (1.5m diameter)	NOK 1 750	Per 24-hour period	Transport and personnel
Yokohama fenders (2.0m diameter)	NOK 2 000	Per 24-hour period	Transport and personnel
Yokohama fenders (2.5m diameter)	NOK 2 750	Per 24-hour period	Transport and personnel
Yokohama fenders (3.0m diameter)	NOK 3 250	Per 24-hour period	Transport and personnel
Yokohama fenders (3.5m diameter)	NOK 3 750	Per 24-hour period	Transport and personnel
Emergency preparedness container (150m NOFI 250 EP-T Oil Boom)	NOK 5 200	Per 24-hour period Min. 2 days rental	Transport and personnel
ROV	By agreement		
Show room container	NOK 2 500	Per day	Transport and personnel
Extra safety fences (yellow)	NOK 25	Per meter/Per 24-hour period	Transport and personnel

Notes:

- <sup>1)</sup> Minimum 2 hours. Outside regular working hours, please see personnel regulations.
- The tenant must return the equipment in the same condition as when handed over.
- The tenant must take care of cleaning and any damage.
- Fixed, long-term assignments – price on application.

#### 3.3. Hire of port authority vessel

Hire charge for port authority vessels (excl. VAT):

TYPE	Price	UNIT	EXTRA CHARGE
Hire of "M/B Sydnes"	NOK 4 500	Per hour	Incl min. crew
Hire of "Nordnes"	NOK 2 600	Per hour	Incl min. crew
Hire of Pioneer (18 ft)	NOK 1 500	Per hour	Incl min. crew

## 4. REGULATIONS AND TERMS & CONDITIONS

### 4.1. Max. number of vessels and passengers

Port of Bergen's cruise activity is subject to the following maximum limits:

Max. number of ships per day	:	4
Max. number of passengers per day	:	8 000

Notes:

- Number of cruise ships applies regardless of size.
- Number of passengers per ship is calculated based Lloyds Register details and maximum number of passengers per ship.

### 4.2. Bookingsystem

Port of Bergen wishes to ensure that future bookings for the port favor the most eco-friendly vessels. The criteria, as outlined below, will become more stringent over time.

#### 4.2.1. 2025

Port of Bergen is open for new bookings for 2025 provided they are according to restrictions and there is available capacity within the limitations:

GROUP	BOOKING OPENS	CONFIRMATION DATE
All ships	Open	IMMEDIATELY

Notes:

- Minimum engine requirement at berth: Tier 2 or shore power
- Ships that do not meet the minimum requirement will not have their booking confirmed.
- Ships booked with minimum requirement, but do not meet the requirement upon arrival, will get an EPI score at zero ("0").
- The "first come first serve" principle applies.
- Time of arrival or departure can NOT be changed without consulting the port. Extra costs may occur.

#### 4.2.2. 2026 and further

Port of Bergen is open for new bookings for 2026 and coming years after "first come, first serve" principle, provided they are according to restrictions and there is available capacity within the limitations, and provided the ship is able to connect to shore power according to standard:

Group	BOOKING OPENS	CONFIRMATION DATE
All ships	Open	IMMEDIATELY

Notes:

- **Minimum booking requirement:** Ship must be equipped with **Onshore Power System** according to the International Standards IEC 80005-3 (low-voltage) and IEC 80005-1 (High voltage), or other zero emission technologies (batteries, hydrogen or similar).

### 4.3. EPI – Environmental Port Index

EPI has been introduced as an economic incentive to support sustainable and eco-friendly cruise operations and to make it less profitable to call to port for ships that cause pollution.

EPI applies to all cruise-ship calls and will affect the quay dues.

Cruise ships shall report data from their call at port to [epi@dnvgl.com](mailto:epi@dnvgl.com) no later than 72 hours after departure. This data will be used to allocate an EPI score, ranging from 0 (worst) to 100 (best).

A change in % will be calculated using the following formula, and will apply to quay dues:

The following EPI will apply for 2025:

DESCRIPTION	SCORE	FORMULA	SURCHARGE / DISCOUNT
Break-even point, surcharge vs. discount	50		
At a score	< 50	$(50 - \text{EPI score}) * 3.3/100$	Max. 165 % surcharge
At a score	> 50	$(50 - \text{EPI score}) / (2.3 * \text{EPI score})$	Max. 21,7% discount

Notes:

- If a ship fails to report data, it will be allocated a score of 0.

### 4.4. Cancellation fees

For Port of Bergen to confirm availability for up to four cruise ships well in advance of requested arrival date, bookings must be secured by means of a cancellation fee. Changing the cruise schedule is a resource-demanding process, and to replace a cancelled cruise call with another ship becomes more difficult as the arrival approaches.

The following cancellation fees will apply:

Descripton	Percentage	Fee
Cancellation within 18 months of ETA will incur	15 %	Quay dues
Cancellation within 12 months of ETA will incur	25 %	Quay dues
Cancellation within 6 months of ETA will incur	50 %	Quay dues
Cancellation within 3 months of ETA will incur	75 %	Quay dues
Cancellation within 48 hours of ETA will incur	100 %	Quay dues
Cancellation within 24 hours of ETA will incur	100 %	Quay dues

Notes:

- Other direct costs (e.g. security guards, shuttle bus, personnel etc.) incurred because of cancellation, will be charged to the ship.

### 4.5. Ship maintenance work when alongside

Due to the busy nature of the cruise-ship areas, ship maintenance work should be kept to a minimum during the stay. There may be activity in the harbor not related to the ship. If work still must be undertaken, this must be approved by Port of Bergen.

The following applies specifically to painting of the ship's side when alongside in Port of Bergen:

- Any ship painting work to be undertaken when alongside requires Port of Bergen's approval.
- The ship is liable for any damages to cars and other equipment exposed to paint particles.



## 5. CHANGE LOG

### 5.1. Change log 2024 vs 2025

THE FOLLOWING HAS CHANGED IN RELATION TO THE PREVIOUS 2024 PRICE LIST:

---

- 1.2** Port dues
  - Quay dues**
    - Prices adjusted
    - Note:**
      - Line 2: Removed
- 1.3** **Passenger fees**
  - Prices adjusted
  - Note:**
    - All notes removed
- 1.4** **ISPS**
  - Prices adjusted
  - Note:**
    - Line 1: Removed
- Services
  - 2.2** **Water supply**
    - Prices adjusted
  - 2.3** **Shore Power**
    - Text adjusted
  - 2.4** Ship wastewater
    - Text adjusted
  - 2.7** **Security package**
    - Prices adjusted
  - 2.8** Lift and crane
    - Cherry picker added in text
- Personnel and equipment hire
  - 3.1** **Hourly rates**
    - Prices adjusted
  - 3.2** **General Equipment Hire**
    - Some few prices adjusted
  - 3.3** **Port authority vessel**
    - Prices adjusted
- Regulation terms & conditions
  - 4.1** **Max number of vessels and passengers**
    - Note 3 and 4 removed
  - 4.2.1** **Heading and text adjusted**
    - Heading, text and notes adjusted
  - 4.2.2** **Heading, text and notes adjusted**
  - 4.2.3** **Removed**
  - 4.3** **EPI**
    - Headtext adjusted (removed passenger and ISPS charges as part of EPI calculation)
    - Break-even point adjusted to 50
    - Note:**
      - Line 2: Removed
  - 4.4** **Cancellation fees**
    - Percentages adjusted
  - 4.5** **Use of own equipment**
    - Removed