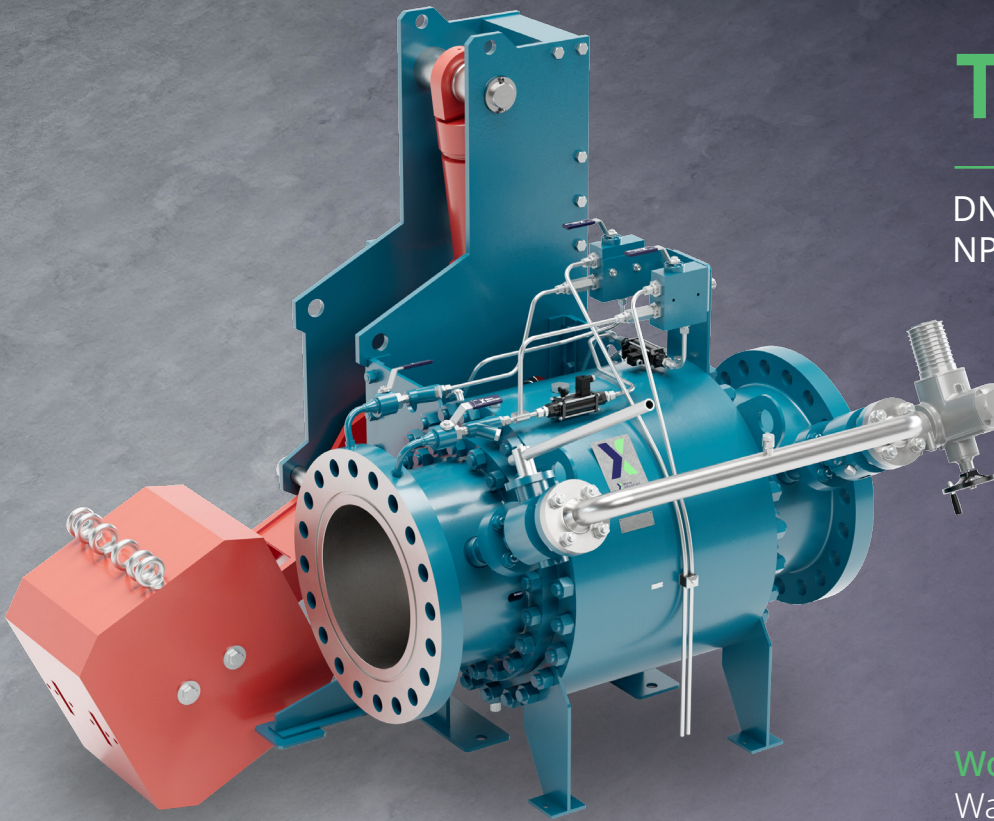


Type K92.15

DN 200-800 PN 16-100
NPS 8"-32" Class 150-600



Working medium
Water (Clean river water)

Trunnion mounted ball valves

with retractable (water operated) seats
and with lever & counterweight

Application

- For hydro power plants with function of emergency closing in case of power failure
- Lower torque than PMSS seats (K92.14)
- Suitable for higher flow speeds

Material

- Carbon steel
- Low alloy steel
- Stainless steel

Seats

- Retractable Metal x Metal Seats

Accessories

- By-pass arrangement
- Dismantling joint
- Draining
- Venting
- Position sensors
- Anchor bolts with base plate
- Terminal box
- Seats operation system - valves, piping, filters, indicators etc.

Operation

- Valves for moving seats could be manually or electrically operated
- Opening by hydraulic cylinder and closing by counterweight

Connection to pipeline

- Flanged ends acc. EN 1092-1 flat face or raised face, ASME B16.5 (B16.47)



Key benefits

- Design eliminates friction between sealing surfaces during opening or closing of valve which provide longer lifetime and lower operating torque
- Possibility of changing downstream seat without dismantling whole Main inlet valve from pipeline
- Retractable metal x metal seats sustain higher water speeds and cavitation than PMSS seats
- Many variants of design configurations
- Zero leakage
- Low headloss
- Wide seating surface
- Long-term reliability and maintenance-free service