

Politics



GCSE

Key Vocabulary

Definitions and morphemic analysis



Introduction

This booklet helps support the explicit teaching of GCSE vocabulary. The words have been chosen for their relevance to the subject as well as their morphemic analysis.

Students undoubtedly need to understand subject specific vocabulary for their studies, but knowing the morphemic analysis will also allow students to make connections across the subject, across the curriculum and hand them the ability to find meaning at the point of need.

Each of the Key Vocabulary booklets could be handed to the students for their own study, but below are some possible teaching ideas.

Some teaching ideas:

Ask students – what does it mean and how do you know?
Display the word with its definition or morphemic analysis.

All students discuss the potential meanings.

Display the morphemic analysis.

Explore how understanding the morphemes (prefixes, suffixes and stems) allows them to find the meaning and develop a gist understanding without having to have a full definition.

Explore vocabulary with shared morphemes. Are there common morphemes shared within particular topics? Where else have they encountered vocabulary with those morphemes?

Use new vocabulary in their own writing, both narrative and academic.

If you're interested in exploring the explicit teaching of vocabulary visit enquiries@lexonik.co.uk and ask about Lexonik Vocabulary Plus, a morphemic analysis and explicit vocabulary instruction platform.



Vocabulary

GCSE Politics



advocacy

- arguing on behalf of a particular issue

Morphemic analysis

/ ad / to, towards; for; addition, into - Prefix

/ voc / voice, call - Stem

/ acy / state, quality, condition, act of - Suffix

democracy

- a type of government made up of politicians chosen by the votes of the people

Morphemic analysis

/ demo / people - Prefix

/ cracy / leadership, rule - Suffix

executive

- a person or group with senior management responsibility; having the power to put plans into effect

Morphemic analysis

/ ex / out, out of, away, thoroughly - can be 'exo' - Prefix

/ ecu / follow - Suffix

/ ive / tending to, by nature - Suffix



Key Vocabulary

GCSE Politics



citizenship

- the status or position of being a legal member of a country or place

Morphemic analysis

/ ship / condition, status, job, skill - Suffix

devolution

- the process of transferring power by central government to lower level, local or regional, government

Morphemic analysis

/ de / away, down, reverse, not; thoroughly - Prefix

/ volu / roll, turn - Stem

/ tion / act, process, result - Suffix

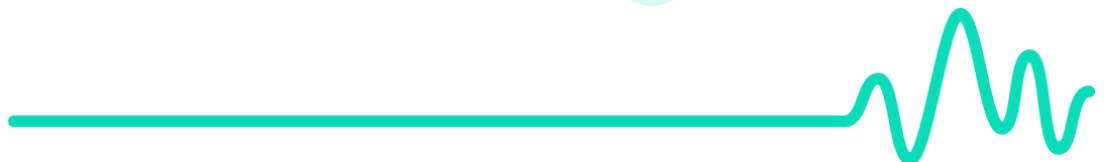
pension

- money paid regularly by the government, or company, to a person who does not work any more because they are too old or have become ill

Morphemic analysis

/ pend / hang; weigh; pay - Prefix

/ sion / act, process, result - Suffix



Key Vocabulary

GCSE Politics



legislature

- an organised body having the authority to make laws for a political unit

Morphemic analysis

/ leg / read; law; collect, gather - Stem

/ ure / act, process, result - Suffix

reform

- make changes in something, especially an institution or practice, in order to improve it

Morphemic analysis

/ re / again, back, thoroughly - Prefix

/ form / shape - Stem

referendum

- a vote where ordinary people vote directly on a single issue, e.g. Scottish independence

Morphemic analysis

/ re / again, back, thoroughly - Prefix

/ fer / carry, bring; iron - Stem

/ endum / must be - Suffix



Key Vocabulary

GCSE Politics



debate

- argue about a subject, especially in a formal manner; from Old French 'batre' - 'to beat'

Morphemic analysis

/ de / away, down, reverse, not; thoroughly - Prefix

endorsement

- the act of declaring public approval or support; literally means 'on the back of'

Morphemic analysis

/ dors / back - Prefix

/ en / into, onto, inside, within - Prefix

/ ment / state, result of an action - Suffix

political

- to do with the government of a community or country, often to do with power and/or money within the community

Morphemic analysis

/ polis / city, state - Stem

/ ical / to do with, like - Suffix



Key Vocabulary

GCSE Politics



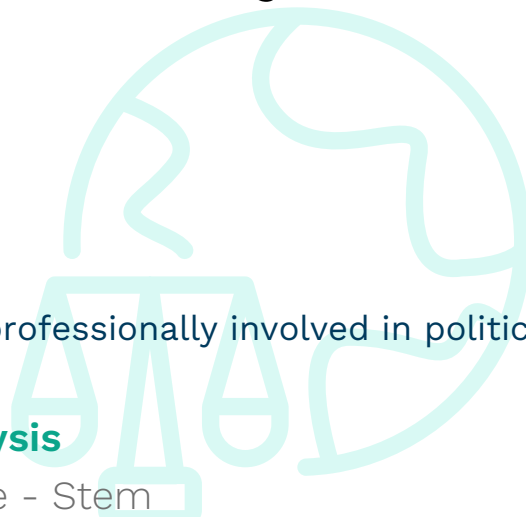
politician

- a person who is professionally involved in politics, especially as a holder of an elected office

Morphemic analysis

/ polis / city, state - Stem

/ cian / a person with a skill - Suffix



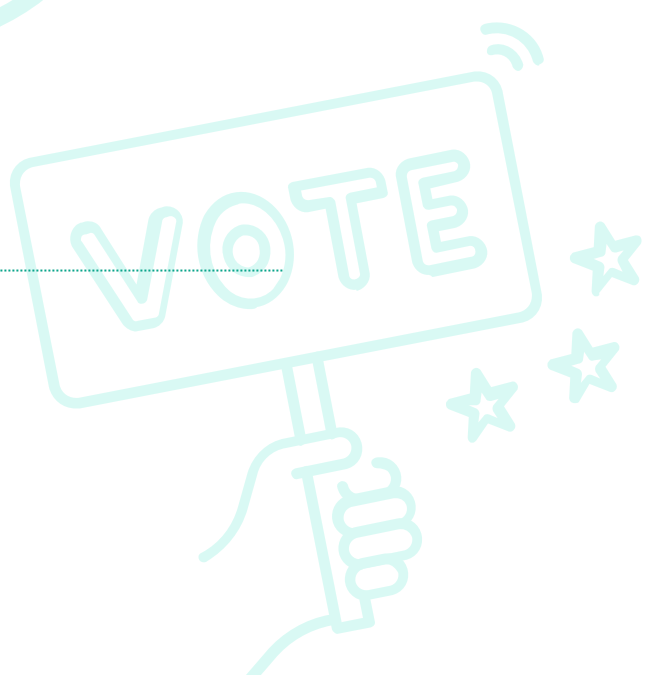
candidate

- a politician seeking election

Morphemic analysis

/ can / to glow, to shine; white - Stem

/ ate / make into, become; put into action; treat with - Suffix



inflation

- the process of prices rising as the value of money falls

Morphemic analysis

/ in / in, into, on; not; very - can be 'en' - Prefix

/ flat / blow - Stem

/ tion / act, process, result - Suffix

