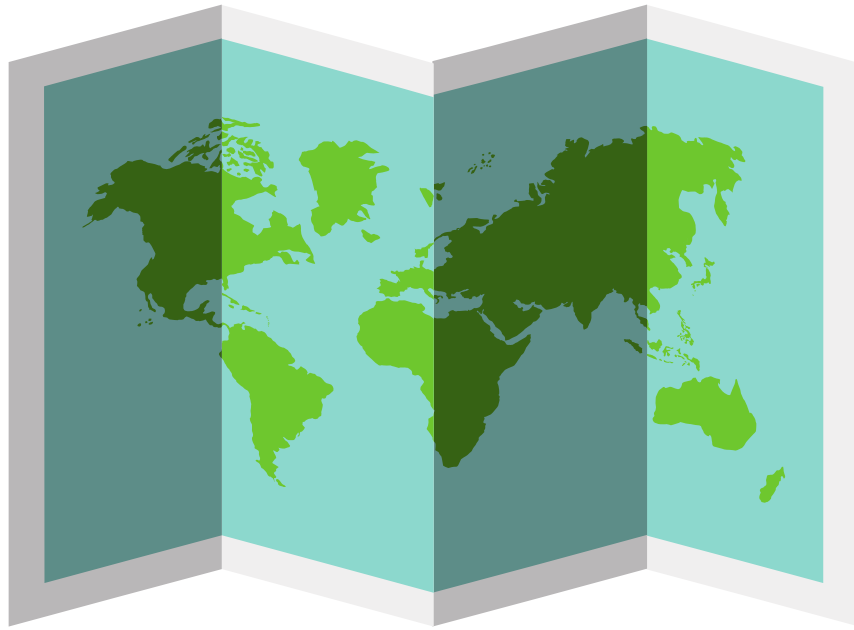


Geography



GCSE

Key Vocabulary

Definitions and morphemic analysis



Introduction

This booklet helps support the explicit teaching of GCSE vocabulary. The words have been chosen for their relevance to the subject as well as their morphemic analysis.

Students undoubtedly need to understand subject specific vocabulary for their studies, but knowing the morphemic analysis will also allow students to make connections across the subject, across the curriculum and hand them the ability to find meaning at the point of need.

Each of the Key Vocabulary booklets could be handed to the students for their own study, but below are some possible teaching ideas.

Some teaching ideas:

Display the word without its definition or morphemic analysis.

Ask students – what does it mean and how do you know?

All students discuss the potential meanings.

Display the morphemic analysis.

Explore how understanding the morphemes (prefixes, suffixes and stems) allows them to find the meaning and develop a gist understanding without having to have a full definition.

Explore vocabulary with shared morphemes. Are there common morphemes shared within particular topics? Where else have they encountered vocabulary with those morphemes?

Use new vocabulary in their own writing, both narrative and academic.

If you're interested in exploring the explicit teaching of vocabulary visit enquiries@lexonik.co.uk and ask about Lexonik Vocabulary Plus, a morphemic analysis and explicit vocabulary instruction platform.



Vocabulary

GCSE Geography



abiotic

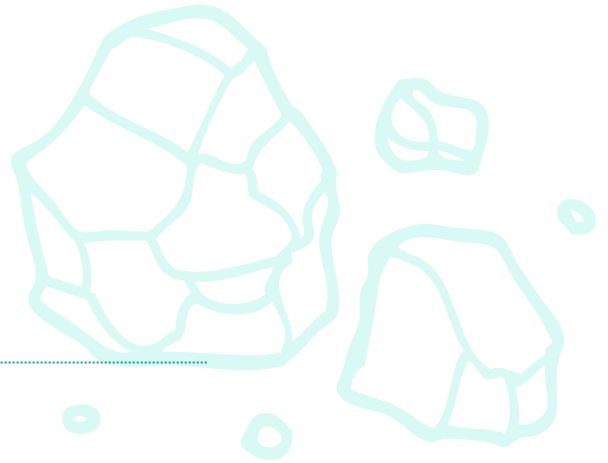
- something not derived from living organisms

Morphemic analysis

/ a / not, without; on, into - Prefix

/ bio / life - Prefix

/ ic / to do with, like - Suffix



consumer

- an organism, usually an animal, that feeds on plants or other animals

Morphemic analysis

/ con / together, with; altogether - Prefix

/ sum / take - Stem

/ er / person or thing that performs an action - Suffix

producer

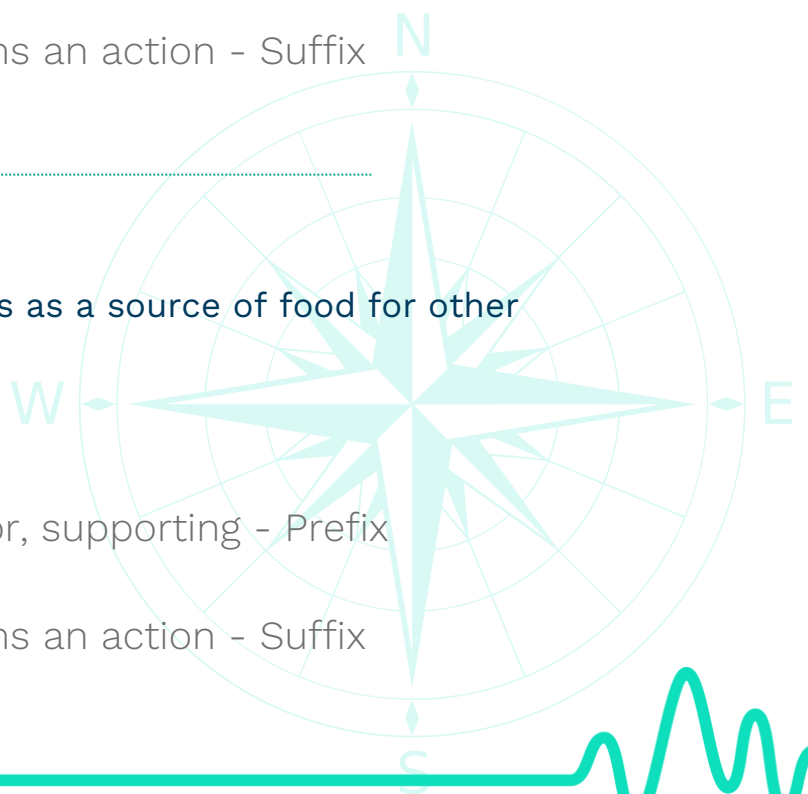
- an autotrophic organism that serves as a source of food for other organisms in a food chain

Morphemic analysis

/ pro / forward, in front, before; for, supporting - Prefix

/ duc / lead, take - Stem

/ er / person or thing that performs an action - Suffix



Key Vocabulary

GCSE Geography



biodiversity

- the number and variety of species of plant and animal life within an area

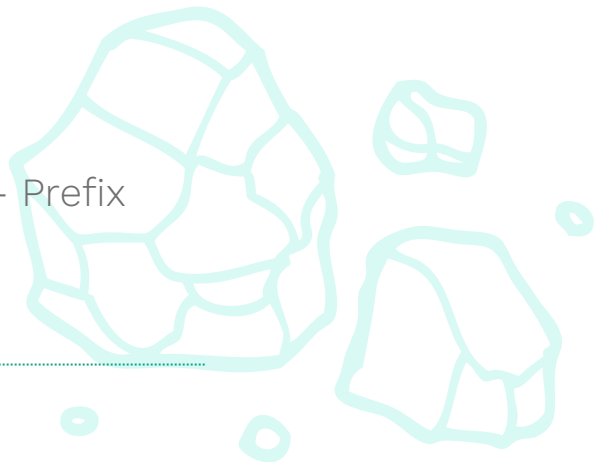
Morphemic analysis

/ bio / life - Prefix

/ di / down, away, reverse; two, apart; day - Prefix

/ vert / bend, turn - can be 'vers' - Stem

/ ity / state, condition, quality - Suffix



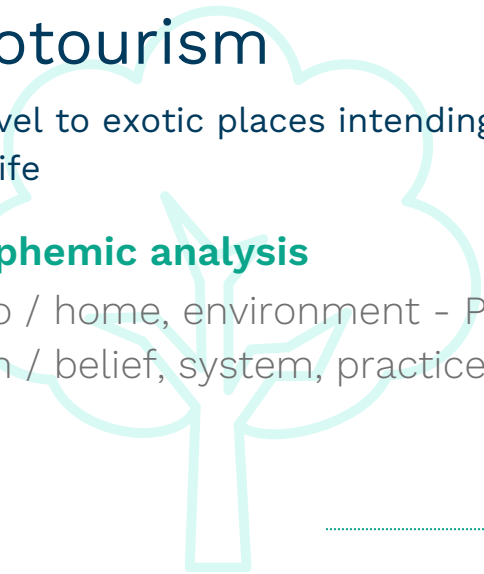
ecotourism

- travel to exotic places intending to observe and support conservation and wildlife

Morphemic analysis

/ eco / home, environment - Prefix

/ ism / belief, system, practice; condition of - Suffix



infrastructure

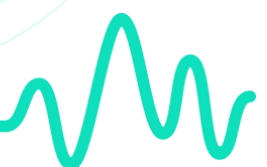
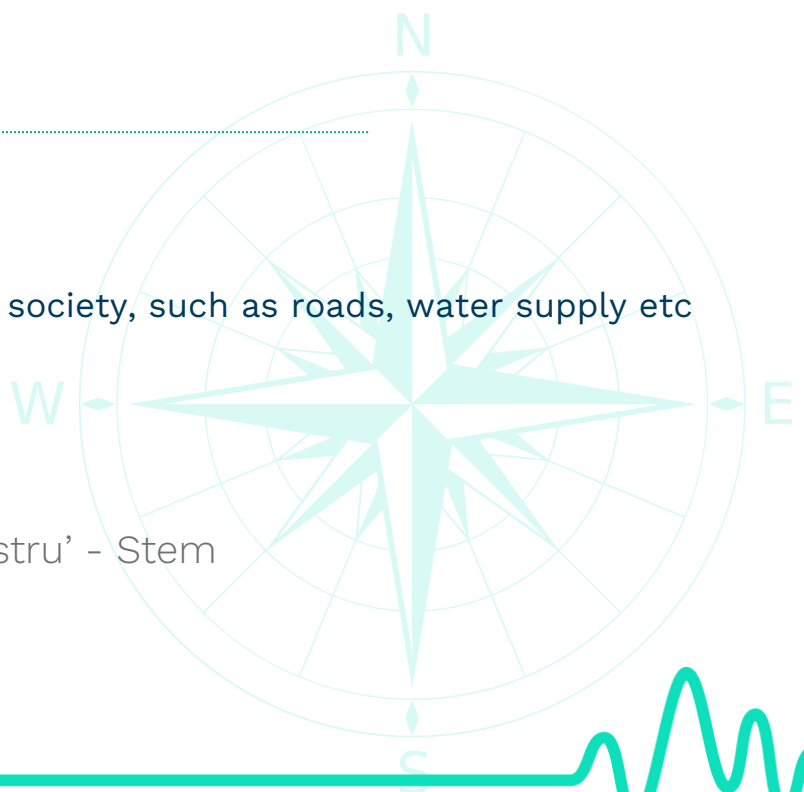
- technical structures that support a society, such as roads, water supply etc

Morphemic analysis

/ infra / below - Prefix

/ struct / build, arrange - can be 'stru' - Stem

/ ure / act, process, result - Suffix



Key Vocabulary

GCSE Geography

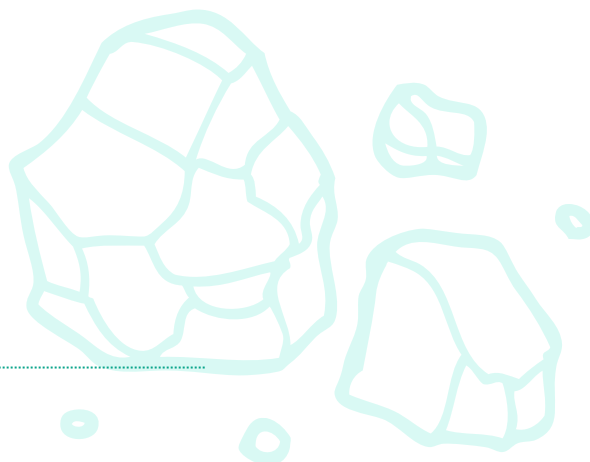


transportation

- the movement of soil and sediment from one place to another

Morphemic analysis

/ trans / across, through - Prefix
/ port / carry, bring - Stem
/ tion / act, process result - Suffix



international

- between two or more different countries, e.g. international travel

Morphemic analysis

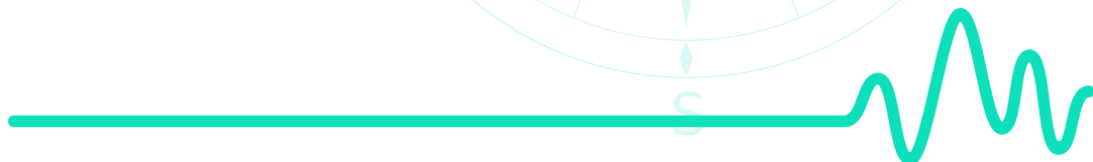
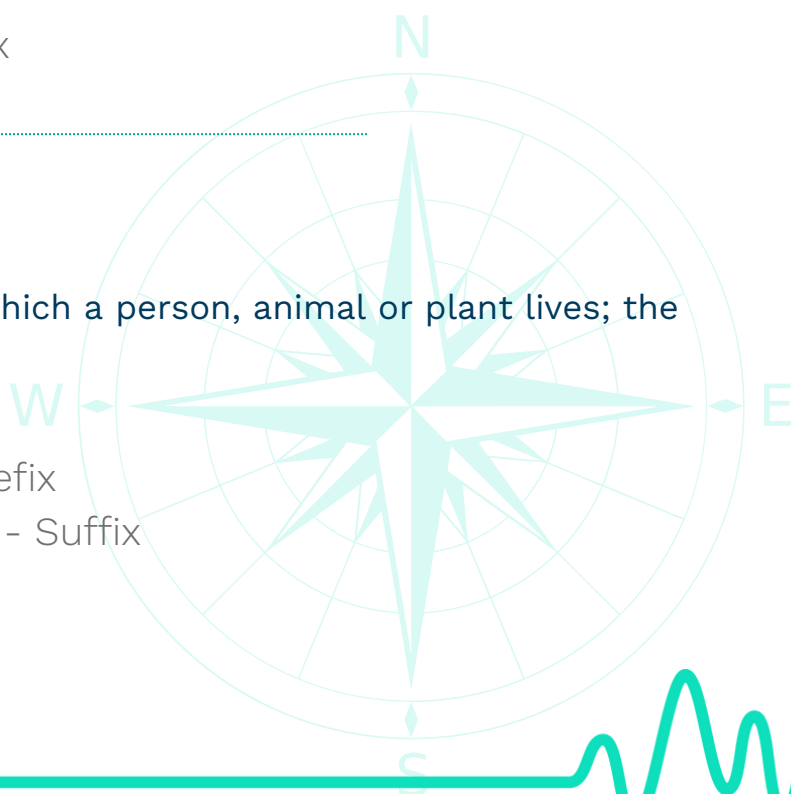
/ inter / among, between - Prefix
/ nat / birth - Stem
/ al / to do with - Suffix
/ tion / act, process, result - Suffix

environment

- the surroundings or conditions in which a person, animal or plant lives; the natural world

Morphemic analysis

/ environ / surround, encircle - Prefix
/ ment / state, result of an action - Suffix



Key Vocabulary

GCSE Geography

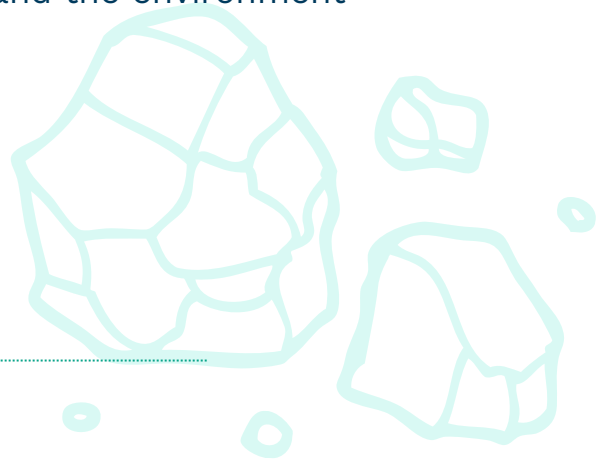


conservation

- the act of protecting and preserving wildlife and the environment

Morphemic analysis

/ con / together, with; altogether - Prefix
/ serv / save, keep; to serve, slave - Stem
/ tion / act, process, result - Suffix



altitude

the height of someone or something above ground-level or sea-level

Morphemic analysis

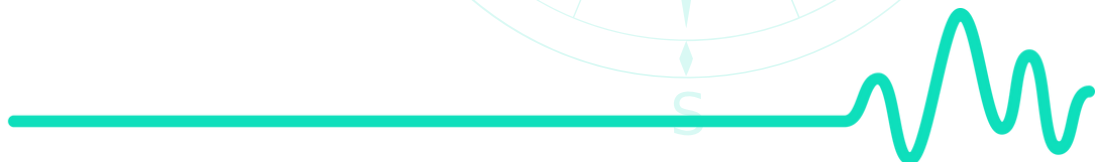
/ alti / high - Prefix
/ tude / state, condition - Suffix

erosion

- the process of wearing something away by wind, water, etc

Morphemic analysis

/ e / out, out of, away, thoroughly - Prefix
/ rod / gnaw, eat - can be 'ros' - Stem
/ sion / act, process, result - Suffix



Key Vocabulary

GCSE Geography

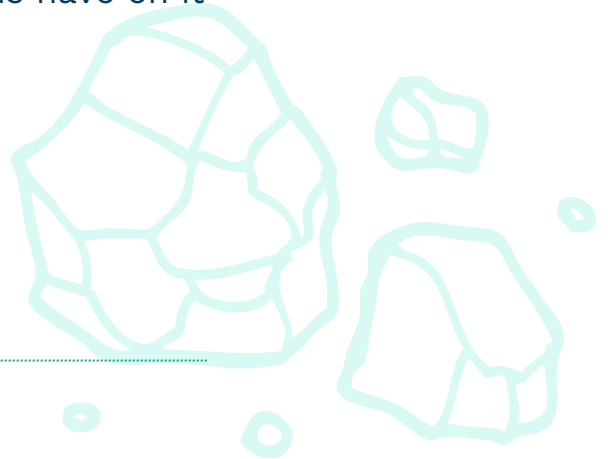


geography

- the study of the earth and the effects humans have on it

Morphemic analysis

/ geo / rocks, earth - Prefix
/ graph / write, mark - Suffix
/ y / like, full of - Suffix



coordinates

- a set of numbers used to show a position on a graph

Morphemic analysis

/ co / together, with; altogether - Prefix
/ ordin / order, rank, arrange, regulate - Stem
/ ate / make into, become; put into action; treat with - Suffix

deforestation

- the act of cutting down and clearing forest areas for other use

Morphemic analysis

/ de / away, down, reverse, not; thoroughly - Prefix
/ tion / act, process, result - Suffix

