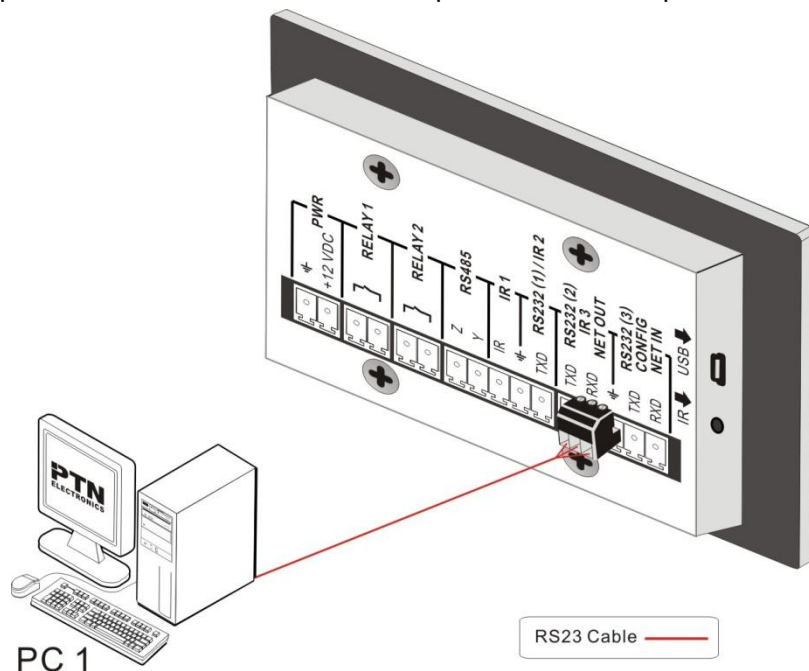


WP8/WP19 Firmware Update

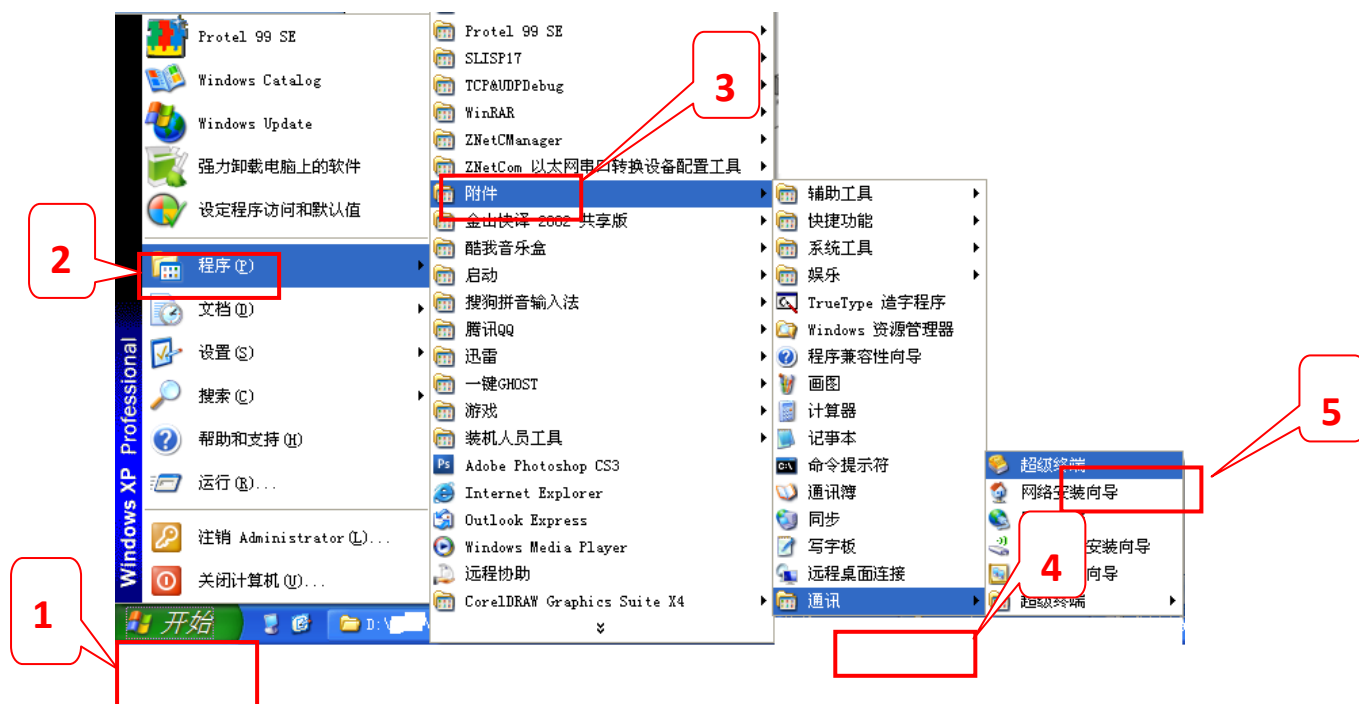
1: Use RS232 cable to connect PC and WP8/WP19;

For WP19, please connect to the RS232 PRG port, and for WP8 please check as below:

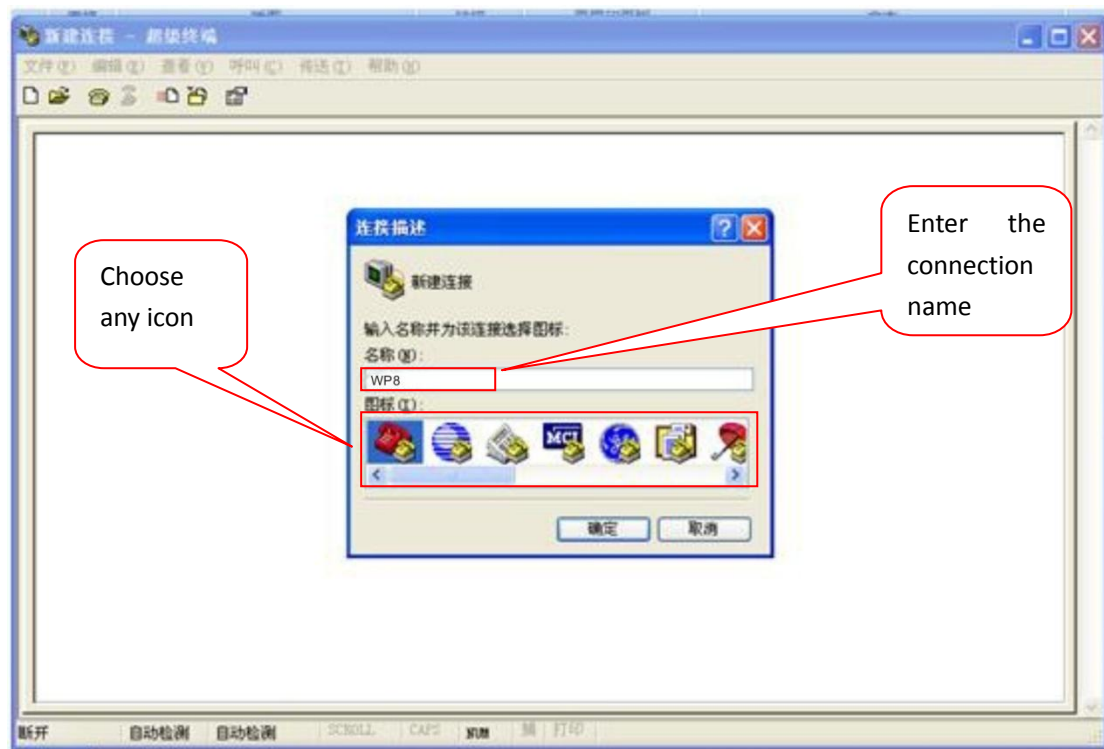


2: Open a Hyper Terminal in the operation PC;

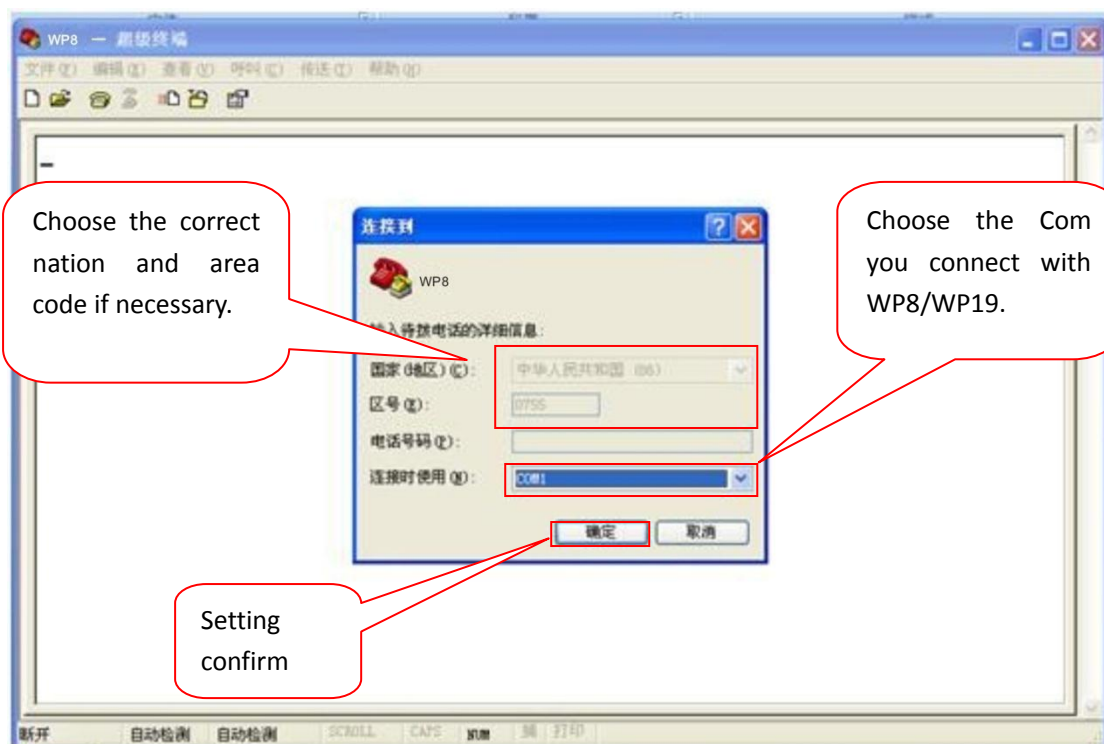
For XP, follow as below: Start→program→ attachment→communication→Hyper terminal
For WIN7, You may need to download the software first, for it is not installed in the system as default. You can find it at <http://www.hilgraeve.com/hyperterminal-trial/>



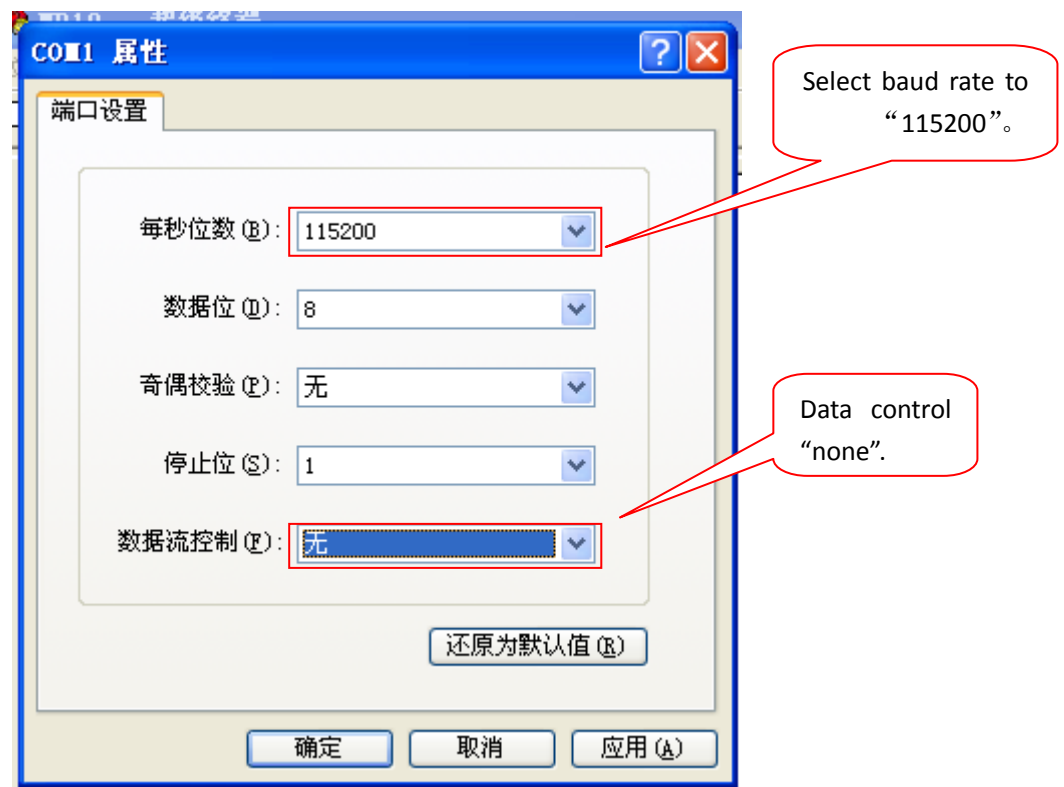
3: Create a new connection;



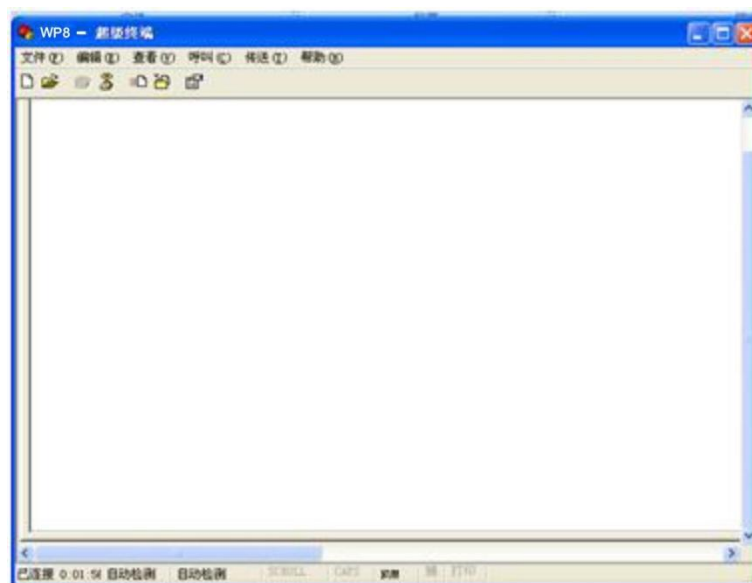
4: Choose the connect target;



5: Set COM property;

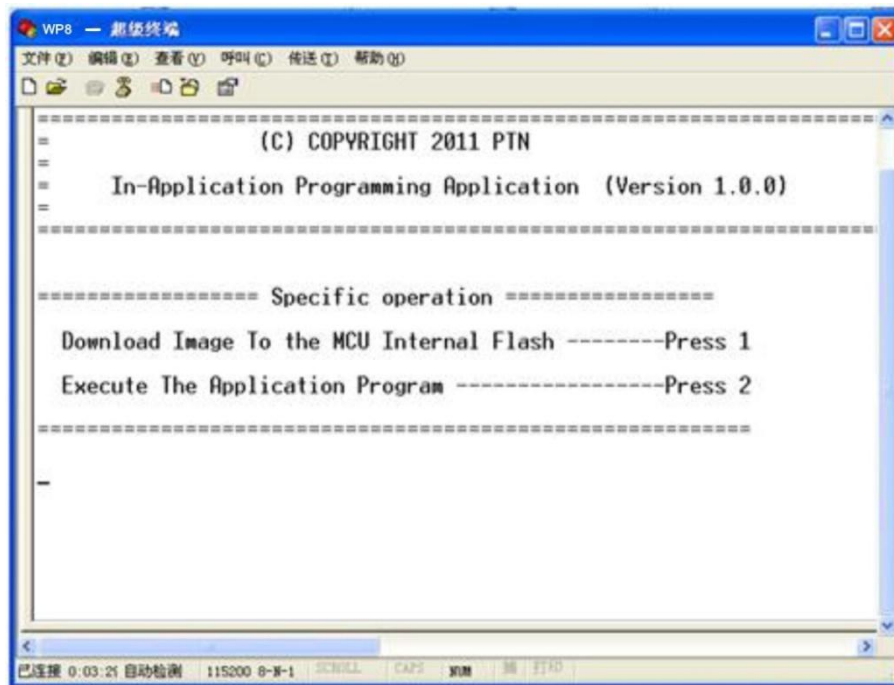


Press OK to enter connection GUI;



6: Operation;

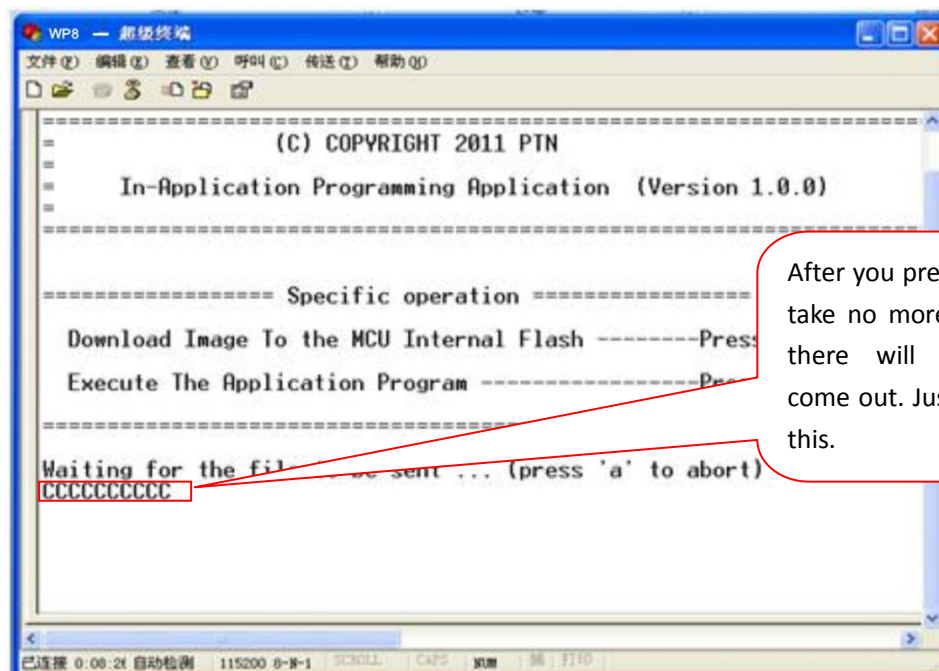
Power off the WP8/WP19, Keep button1 of WP8/WP19 pressed, and then power on; you will get feedback as picture below:



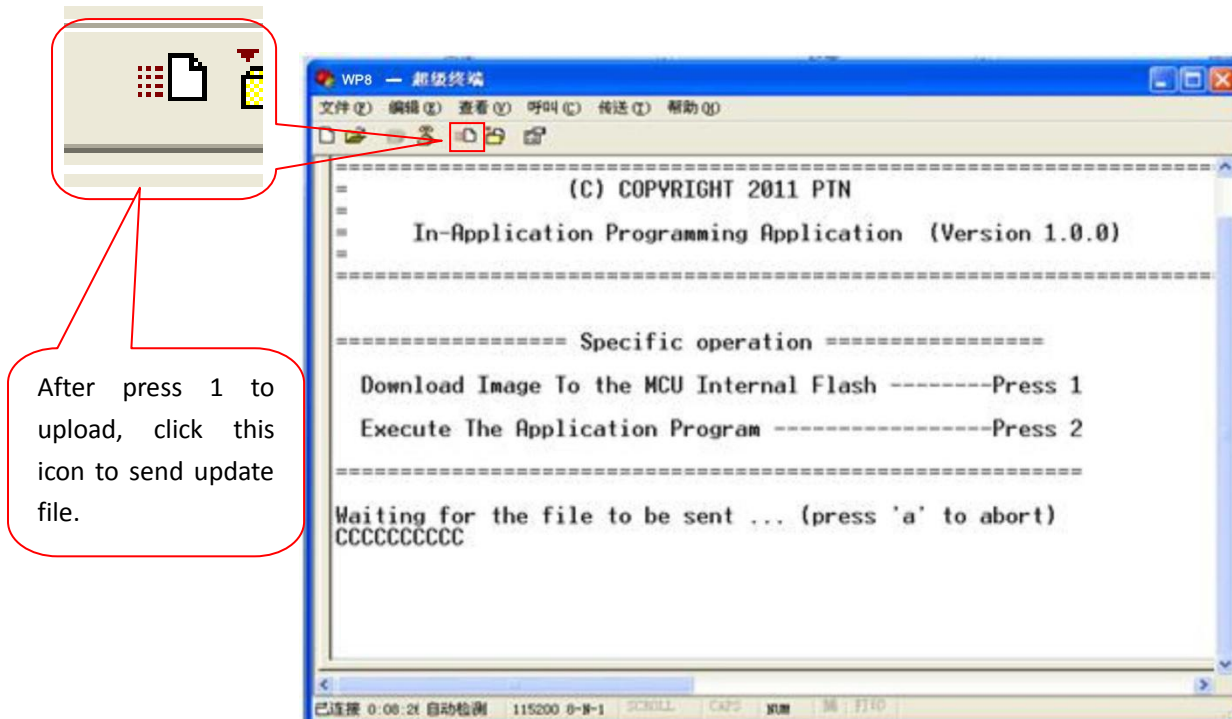
After this feedback is received, you can loose button1. Then choose the operation on your PC:

Press 1 will update the file to WP8/WP19. Please check step 7 about the firmware update operation.

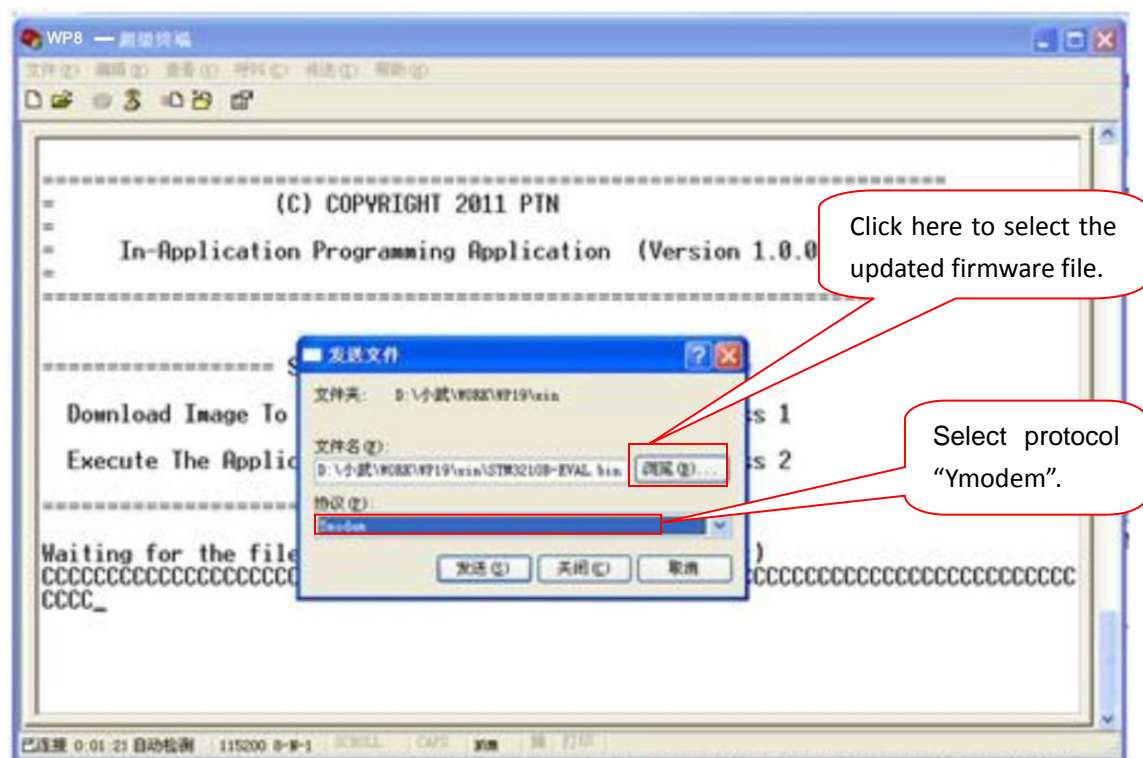
Press 2 will end the operation.



7: Upload operation;



Then it will pop up a window as below;



Press “send”, it will pop up a sending file window, the window will close after file sending finish.

正在发送: F:\STM3210B-EVAL.bin

数据包: 3 错误检查: CRC 文件大小: 34K

重试次数: 0 重试总次数: 0 文件数: 1 / 1

上一错误:

文件: 1K / 34K

已用: 00:00:01 剩余: 吞吐量:

取消 cps/bps (C)

Then the feedback window will show as below, press 2 to finish the updating and the unit will go to normal working status.

```
Waiting for the file to be sent ... (press 'a' to
CCCCCCCCCCCCCCCCCCCCCCCCCCCCCCCCCCCCCCCCCCCCCCCCCCCCCCCCCCCC
CCCCCCCCCCCCCCCCCCCCCCCCCCCCCCCCCCCCCCCCCCCCCCCCCCCCCCCCCCCC
CCCCCCCCCCCCCCCCCCCCCCCCCCCCCCCCCCCCCCCCCCCCCCCCCCCCCCCCCCCC
CCCCCCCCCCCCCCCCCCCCCCCCCCCCCCCCCCCCCCCCCCCCCCCCCCCCCCCCCCCC
CCCCCCCCCCCCCCCCCCCCCCCCCCCCCCCCCCCCCCCCCCCCCCCCCCCCCCCCCCCC
CCCCCCCCCCCCCCCCCCCCCCCCCCCCCCCCCCCCCCCCCCCCCCCCCCCCCCCCCCCC
CCCCCCCCCCCCCCCCCCCCCCCCCCCCCCCCCCCCCCCCCCCCCCCCCCCCCCCCCCCC
CCCCCCCCCCCCCCCCCCCCCCCCCCCCCCCCCCCCCCCCCCCCCCCCCCCCCCCCCCCC
CCCCCCCCCCCCCCCCCCCC
```

Programming Completed Successfully!

Name: STM3210B-EVAL.bin
Size: 34552 Bytes

Press 2 or Reset to run the Application Program

After this, reboot the unit again and then you can upload your programming in new firmware.