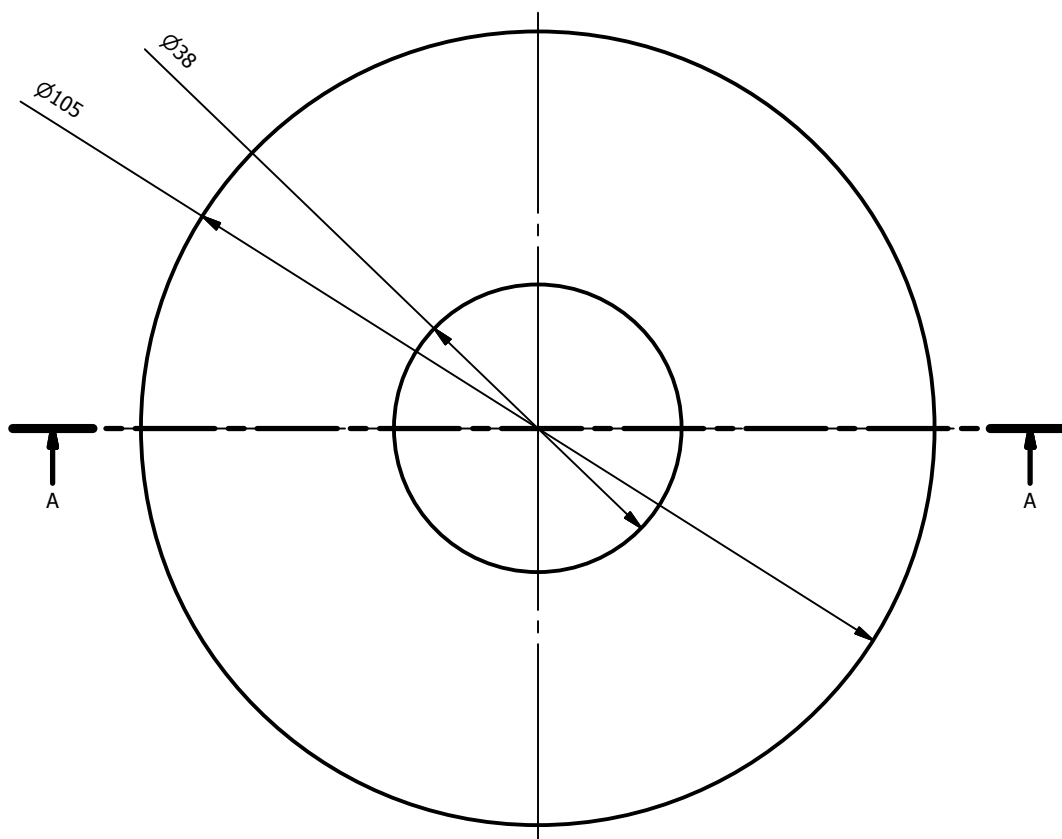
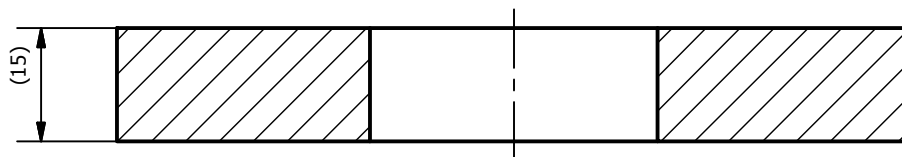


A-A (1:1)


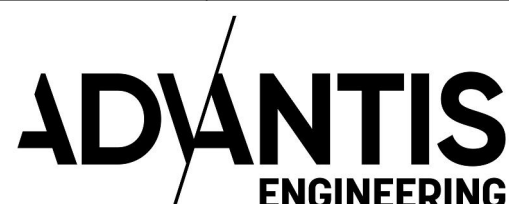


Notes:

All unspecified measures acc. to ISO 2768-1 m

All unspecified thermal cutting measures acc. ISO 9013-1

All sharp edges must be removed

Designed by: APE Date: 12-03-2019	Dimensions: Plate 15mm Material: S355J2 EN 10025-2	Coating: Hot dip galvanize Class: EN ISO 1461 C4	Projection: 
		Description: Adapter washer $\varnothing 38/\varnothing 105$ -15mm	
		Rev. no.: 1	
		Format: A4	Scale: 1 : 1
		Drawing no.: 10040-428	Sheet no.: 1 / 1
			Weight: 0,9 kg