



HOW TO PARTICIPATE?

1. Scan the QR code below.
2. Check out our ONGOING clinical trials, and see if any of our trials are relevant to your medical condition.
3. Consult the relevant doctors to know if you are eligible for the trials. If eligible, you may be enrolled in the trial.

Joining a clinical trial is an important personal decision. You should not feel pressured into making a decision. Being part of a clinical trial is completely voluntary – it's your choice. If you decide to enroll in the trial, you will need to sign the informed consent document. You are free to withdraw from the study at any time. Refusing participation or withdrawing from the study does not jeopardize your access to care, treatment, and services unrelated to the study.



SCAN
HERE



Operating Hours

Monday till Friday : 8:30am - 5:30pm
Saturday : 8:30am - 12:30pm
(Closed on Sunday and Public Holiday)
Location : Clinical research Centre

Contact For More Information

H/p : +6010-240 8344
Email : crc@mahkotamedical.com
Coordinators: Justin Liu Jun Fong (justin.liu@mahkotamedical.com)
Siti Zawiyah Ismail (siti.zawiyah@mahkotamedical.com)

Mahkota Medical Centre Sdn. Bhd. 199001009048(200619-H)

3, Mahkota Melaka, Jalan Merdeka, 75000 Melaka.
Tel: +606 285 2999 Fax: +606 281 0560
Email: info@mahkotamedical.com

www.mahkotamedical.com

Hands That Treat
Hearts That Heal



CLINICAL RESEARCH



CLINICAL RESEARCH AT MAHKOTA MEDICAL CENTER



VISION

To become a center of reliance in clinical research from within and outside of our hospital.



MISSION

To participate in clinical research in our commitment towards enhancement in science.



OBJECTIVE

To carry out ethical and reliable clinical research that adheres to international and local standards.



WHAT ARE CLINICAL TRIALS?

- Types of research involving a group of volunteers that studies new tests and treatments (e.g.: vaccines, medical devices, medications) to evaluate their safety and effects on human health outcomes
- These studies are sponsored by private companies such as pharmaceutical companies or by government agencies.
- Mahkota Clinical Research Centre (CRC) was set up to promote ethical and reliable research according to Good Clinical Practice (GCP) that adheres to international and local standards.
- Our role is to ensure that every patient enrolled in a clinical study receives safe, coordinated, and high-quality care throughout their participation.

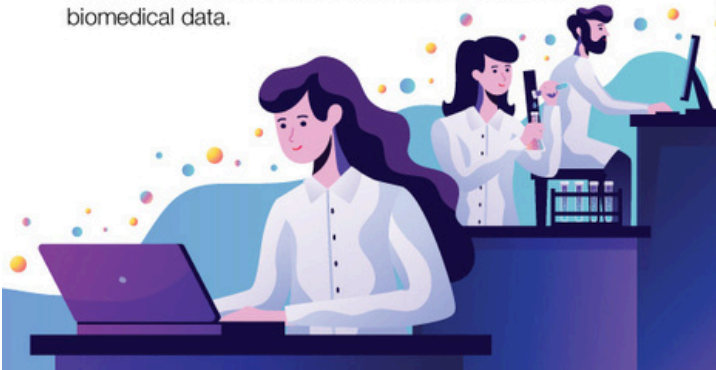
HOW ARE MY RIGHTS PROTECTED?

- MMC protects patients under the clinical trial program by following planned protocols.
- A protocol is similar to a recipe for research studies. It lays out the step by step of the clinical trial process to ensure the research is carried out in a coordinated and ethical way. Trials must follow strict laws, regulations, and safety procedures.
- A protocol consists of:
 - Goal of the trial
 - Eligibility
 - Details about the tests, procedures, and treatment plan
 - Duration of the trial
 - Risk factors



WHAT IS CLINICAL RESEARCH?

- Clinical research refers to any systematic investigation involving human participants that is intended to develop or contribute to generalizable knowledge related to health, disease, or medical interventions. This includes studies on the safety, efficacy, diagnosis, prevention, and treatment of illnesses through the collection of clinical, behavioral, or biomedical data.



AM I ELIGIBLE?

- Eligibility criteria often includes age, gender, medical history and current health status.
- To participate, patients must already have a certain type of medical condition that meets the inclusion criteria of the trial.

BENEFITS AND RISKS

Like all treatment options, clinical trials have possible benefits and risks.

- Possible benefits:
 - New treatment may work better than standard treatment.
 - New treatment may only be available through the clinical trial.
 - Result of the trial may advance research and help future patients.
 - Close monitoring from an expert medical team.
 - Cost of the treatment is covered by the trial sponsor.
- Possible risks:
 - New treatment may not be better than standard treatment.
 - New treatment may not work for you, even if it works for other patients.
 - Known and unknown side effects may occur.