



ayni ayahuasca

AND CHACRAS INTEGRALES INITIATIVE



Picture by David Clode/Unsplash
Pictures by Alienor de Sas

Celebrating Life in Reciprocity

The Amazon rainforest is home to the greatest diversity of creatures on Earth. Humans, animals, reptiles, insects, and plants figure into this dynamic, evolving forest, which many call the *lungs* or *heart of the planet*. For thousands of years, indigenous and forest peoples have lived in harmony with this ecosystem, acting in reciprocity and partnership with the elements, the seasons, and the abundant gifts of the forest.

The Shipibo people, like many other indigenous communities of the Amazon rainforest, perceive of and relate to the rainforest as a diverse community of sentient beings. Plants and animals, trees and insects, winds, rivers, and all of nature's phenomena are interwoven and constantly in communication with humans, both subtly and directly.

“Ayni closely translates to interconnectedness and reciprocity. It is the recognition that individuals and communities are woven into a net of interdependence that entails mutual responsibility for the wellbeing of each other”

A life lived in reciprocity and interdependence emerges from the practical knowledge that any given being does not exist in isolation, but is in continuous dialogue with

the rest of the natural world. As members of this organic community, we are woven into a net of inter-being that entails mutual responsibility. Our personal lives are linked to the health of the entire biosphere. Today, a new culture is evolving - a culture connected to the world of sacred plant medicines, guided and inspired by indigenous people of the Amazon rainforest.

In the Quechua language, the most widely spoken indigenous language of Perú, Ayni is the central principle that guides all aspects of daily life. Ayni closely translates to interconnectedness, respect, and reciprocity. It is the recognition that individuals and communities are woven into a net of interdependence that entails mutual responsibility for the wellbeing of each other.

Ayni fosters the exchange of loving-kindness, wisdom, and beneficent actions between individuals, the environment, the elements, the spirits of nature, and transcendent forces beyond our comprehension. Ayni inspires us to support each other; I help you today, and tomorrow you may help me. With Ayni perpetually underlying our thoughts and deeds, we are able to tap in more easily to the sacred matrix of life - the mysterious, sentient, and benevolent ordering principle that exists just beyond the surface of normal consciousness.



Ancient Wisdom in a Modern Age

Indigenous cultures across the globe have known for millennia the common origin of all life and therefore the interconnectedness and interdependence of people with the natural world. Since the dawn of our species, we have lived wholly immersed in the wonder of a living universe, intuitively guided and supported by the patterns and processes of nature.

Indigenous people have lived sustainably since the beginning of humankind and have passed on sustainable ways of living from generation to generation. With the advent of globalization, continuous attacks on their traditional way of life, loss of indigenous lands, deforestation, and pollution, their knowledge is rapidly being lost and invalidated.

Over the course of hundreds of years, people in more developed countries and societies have lost contact with an instinctive knowing and deeper sense of belonging. Alienated from the natural world, our true identity and deepest nature has been obscured. However, people across the world are beginning to remember that we are not separate from nature at all; rather, we are beings in process, evolving in tandem with the rhythms and cycles of all life



50%

Of Earth's
remaining
rainforest habitat



25%

Of terrestrial
absorption of CO₂
emissions



20%

Of Earth's
fresh water
production



10%

Of Earth's
known
biodiversity



#1

Cultural
diversity
hotspot on Earth

The Amazon Rainforest: Heart of the World, Health of the Earth

The Amazon Rainforest is crucial to life on Earth as we know it; it contains over half of the planet's remaining rainforest habitat, holds 25% of the world's carbon, and produces one fifth of the planet's freshwater. It is the world's premier bio-cultural diversity hotspot, home to scores of unique cultures, worldviews, languages, and countless species of flora and fauna.

"As guardians of the forest, indigenous communities rely upon the wellbeing of the forest in order to derive food, shelter, water, and medicine"

As multinational corporate agribusiness and extractive industries accelerate deforestation with fires, pollu-

tion, and land degradation, the Amazon approaches a tipping point, facing irreversible environmental change with cascading effects. This will impact our global ecosystem forever.

As guardians of the forest, indigenous communities rely upon the wellbeing of the forest in order to derive food, shelter, water, and medicine. Studies reveal that indigenous-managed lands assume quantitatively higher rates of carbon sequestration. In other words, where land is occupied by people who depend on it, it is more likely that this land will be stewarded and defended from the extractive presence of international business. The future of the Amazon and the world relies upon forest people's rightful tenure in the region.



Picture/Chaikuni Institute



Pictures by Alienor de Sas



The Chaikuni Institute

Established in 2012 in the Loreto region of the Peruvian Amazon, the Chaikuni Institute is the non-profit organization of the Temple of the Way of Light.

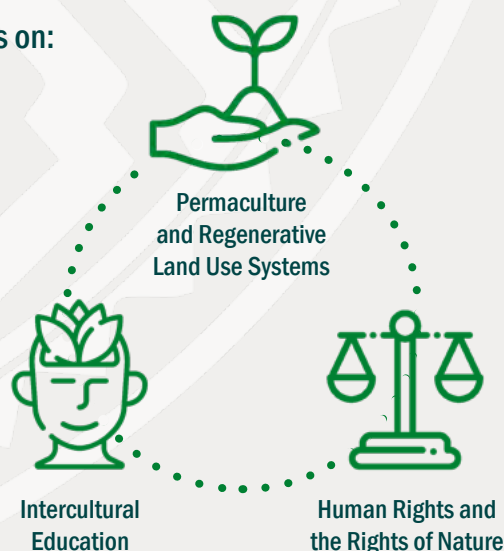
Our name comes from the Shipibo word, *Chaikuni* - the ancestors of the Shipibo people and spiritual guardians of the Peruvian Amazon who actively serve the well-being of this great rainforest on energetic and spiritual levels. In community with the spirits of the plants, trees, and animals, they provide a priceless repository of spiritual, medicinal, and ecological services not only for local tribes, but for the rest of the world.

Collaborating with and financially supported by the Temple, the Chaikuni Institute began work initially to

design and implement a permaculture masterplan on the 220 hectares of Temple land, and to offer permaculture education to local people in five neighboring villages and other Shipibo communities in the Ucayali region.

Operating as a conscious business, the Temple of the Way of Light is committed to reciprocity with local and Shipibo communities and to supporting sustainable development projects that offer an alternative to income from industrial development projects in the Amazon. The Temple has carried out this commitment by donating 100% of its profit to the Chaikuni Institute since its inception.

Chaikuni's programs focus on:





“Our work is guided by the values of reciprocity and mutual responsibility as we strive to link together our individual and planetary healing processes”



Deforestation and Slash-and-Burn

Every year approximately 1.4 million hectares of Amazonian forests are destroyed. While economic productivity increases in the region, land quality, biodiversity, and entire ecosystems are severely impacted. Ecologists predict this continued trend will transform the region into barren scrubland unless action is taken to reform this method of land-use.

“Slash-and-burn agriculture is a method whereby an area of forest is razed to the ground and then burned”

This degradation is primarily due to industrial agricul-

ture and a market-focused land use technique called slash-and-burn. Slash-and-burn agriculture is a method whereby an area of forest is razed to the ground and then burned. In the short-term, this helps to transform nutrient-poor Amazonian soil into arable land for planting staple cash-crops like yucca, plantain, or maize.

While temporarily effective, this practice gradually depletes soil, killing microorganisms and impacting wild-life habitats. After just 2-3 years, farmers must shift to new land, leaving behind degraded and nutrient deficient landscapes.



Pictures by Alienor de Sas

Exploitation and Extraction of Ayahuasca

The rapidly increasing global interest in ayahuasca (a sacred, psychoactive tea made from *Banisteriopsis caapi* and *Psychotria viridis*) has been a mixed blessing for indigenous people. In many cases, this interest provides economic opportunities and supports the continuous evolution of their practices and traditions.

On the other hand, increased demand for the plants is causing a sharp decline in the local availability of the slow-growing *B. caapi* vine. In cities in the Peruvian Amazon such as Iquitos and Pucallpa (the epicenters of the current ayahuasca boom) scarcity means that local people must travel into virgin rainforest order to harvest the vine. It is now common knowledge amongst healers and ayahuasca lodges in the Peruvian Amazon that ayahuasca is becoming alarmingly scarce, over-exploited, and increasingly expensive. Local experts in [this article](#) comment:

“With every passing day these plants are disappearing, there is a shortage,” says Elizabeth Bardales, owner of Natural Chacruna, a company dedicated to the processing of medicinal plants.

“Could the increasing scarcity of ayahuasca coupled with a lack of both economically and ecologically sustainable options for families be transformed into a solution?”

Bowie van der Kroon, a Dutch ayahuasca exporter based in Iquitos, warns that if the extraction continues at this pace “this product won’t be available” in the near

future. *“They have to go further and further. They find new places in the rivers, empty them and go to the next lot... You won’t find anything near here right now. It’s hard to find. It’s already a commercial war,”* he says. *“Now only those who pay more can get it.”*

Jenny Torres has become the biggest ayahuasca seller in the region. In her first years of activity, the ayahuasca that Torres processed came from the Napo and the Marañón basins, traditionally linked to Iquitos. But now, says Torres, *“there are times that there is not enough. It is harder to get ayahuasca than before.”*

Keymer Noriega, 24, is a Shipibo ayahuasca processor from a native community on the banks of the Ucayali. He has been preparing the remedy for exportation since 2013. Now, he pays 8 soles per kilo of ayahuasca, but six years ago when he started, he paid 1.50 soles per kilo. *“I used to buy in my village or in nearby villages,”* Noriega recalls, *“but I bought everything that was there.”* Now he goes to the resellers of Pucallpa: *“They bring it from Imiría where there is a lot and it is wild.”* Noriega declares himself “worried.” *“It’s hard for me to get it. With every passing day it looks more like there’s no ayahuasca.”*

In his article “Ayahuasca Vine Harvesting in the Peruvian Amazon,” Chris Kilham reports an intense extractive activity in Imiría, where large reserves of wild ayahuasca still exist. However, in Caimito, one of the villages of the lake, a villager told him that *“there used to be plenty of ayahuasca around Caimito, but most of it was harvested and sold.”*



A New Paradigm of Regenerative Agroforestry and Agriculture

Since 2012, the Permaculture Program at the Chaikuni Institute has worked to research and revive harmonious and productive methods of interacting with our environment. Permaculture (permanent agriculture) proposes a system of continuously cultivating and caring for land which regenerates and improves its quality.

Chaikuni shares research findings with communities to integrate the discoveries into their land use techniques and outlook. Reciprocally, Chaikuni learns from local commu-

nities. This co-creation of knowledge through applied, practical action is at the heart of Chaikuni's approach.

Throughout the Peruvian Amazon, a *chakra* refers to an arable piece of land that is used for the cultivation of crops. A *chakra integral* can be interpreted as a holistic farm - one that is highly productive and biodiverse. Chaikuni's initiative promotes traditional Peruvian *chakra integrales* combined with a permaculture-inspired agroforestry method from Brazil called *Agrofloresta*.

Chaikuni's Ayni Ayahuasca and Chacras Integrales Initiative Works By:



Reforestation in the Amazon with productive agroforestry systems



Generating income for local Amazonian families in the short, medium, and long-term



Developing sustainable ayahuasca production to meet increasing local and international demand



Researching and producing knowledge on best permaculture practices



Community outreach and capacity-building with rainforest communities



Supporting market access for rainforest communities



Pictures by Alienor de Sas

Educating on regenerative environmental practices



“Our permaculture hub is a place where local Amazonian farmers collaborate and learn with people from different corners of the world, exploring the intersection of traditional ecological knowledge and modern land use design, and developing a series of chacra integral demonstration sites”

Core Objectives

Phase One: Contribute to the recovery, regeneration, sustainable use, and management of the rainforest supporting 24 families in the lower Nanay river basin. Recover lost and degraded forest areas and promote sustainable use of the territory in four communities near the city of Iquitos and the Allpahuayo-Mishana National Reserve, an area which is characterized by a strong pressure on resources and an increase in deforestation due to the growing demand from the nearby city.

Our work consists of three main components:

- 1) Promotion and implementation of chacras integrales; a local form of a healthy, highly diverse, and productive agroforestry system, including the cultivation of ayahuasca and other medicinal plants as an alternative to conventional agriculture in order to recover degraded areas, increase food security for families, and reduce poverty. This component includes training families to organize and design their properties based on permaculture principles and to install and maintain their own 1-hectare chacra integral, and the provision of technical assistance in the implementation phase as well as the systematization of information with the aim to monitor and later replicate the model.
- 2) Elaboration of communal land use commitments through village assemblies and participatory planning and support of the creation of local surveillance committees, allowing for reduced deforestation and impeding uncontrolled resources extraction, and leading to forest recovery, sustainable use, and improved conservation.
- 3) Creation of environmental awareness through classes and training, working mainly with educational centers in the villages to inspire actors of social change.

Phase Two: Extend the network of chacras integrales to the Ucayali region, working specifically with Shipibo, family-owned ayahuasca healing centers, local NGOs and indigenous federations (e.g. Oni Xobo, Coshicox, ORAU), and Shipibo families from communities on the river Ucayali.

Key figures and expected outcomes (Phase One):



Promotion of sustainable use of up to 5,300 hectares of tropical rainforest through sustainable use agreements and community surveillance



Direct recovery of 24 hectares of degraded forest areas previously overused as agricultural livestock areas, providing 24 families with highly diversified, scalable production systems, resilience in the face of a changing climate and economic crisis, and examples to neighbors



An estimated contribution of 55,234.08 of CO₂-eq captured over 20 years, mitigating climate change impact and benefitting the nearby Allpahuayo Mishana National Reserve by creating an additional buffer zone to the reserve



Direct participation of at least 268 people and direct and indirect benefits to 355 families

Sustainable Ayahuasca Cultivation

Additionally, within this initiative, the Chaikuni Institute promotes the cultivation of *banisteriopsis caapi*, the ayahuasca vine, as an integral part of the chacra integral system, counteracting the overexploitation of the vine, generating vital income for local families, and helping to conserve the ancient healing practices of the Amazon.

Unlike other cash-crops in the region, ayahuasca is significantly more valuable and easier to sell in the local marketplace. Planting trees together with ayahuasca can offer lucrative, long-term solutions for Amazonian families while revitalizing degraded landscapes, stimulating carbon drawdown, and supporting biodiversity, preserving this sacred medicine and ensuring a healthy ayahuasca population in the region.

Since its inception, the Chaikuni Institute has planted over 1,800 ayahuasca vines on the land of the Temple of the Way of Light. Through outreach work so far, 9 hectares of chacras integrales are growing in four local communities, all of which have planted ayahuasca vine. Many locals are now starting to plant ayahuasca on their own properties, some with Chaikuni's support and some out of their own initiative. Within the next year and a half, Chaikuni aims to expand to 24 hectares of *chacras integrales*.





Pictures by Frederik Buyckx

Eco-Social Enterprise in the Amazon

By creating a living, thriving ecosystem where a wide variety of crops are planted and harvested at varying frequencies, this method provides regular, year-round income for local farmers and their families, generating a significantly higher yield than widespread slash-and-burn farming. The multifunctional agroforestry landscape or *chakra integral* can provide long-term economic, environmental, and social resilience for local families and potentially the entire region, whilst offering an alternative to working for extractive industries that tempt locals with short-term high income to carry out destructive practices.

“The Chaikuni Institute’s long-term goal is to inspire a widespread and highly effective new approach to small-scale farming for communities and by communities, creating a movement that regenerates the Amazon”

With the *chakra integral* method, forest plots are selectively cleared instead of slashing and burning the forest; while some are cleared to make space for desirable crops, others are preserved to nurture existing plants. Valuable habitats and species are preserved. Cut vegetation is left on the ground, mimicking the natural cycles of the rainforest ecosystem. Species that can

coexist on mutually beneficial terms are planted next to each other. A wide, diverse variety of staple crops are planted together with fruit and timber trees, as well as medicinal plants, including the *ayahuasca* vine.

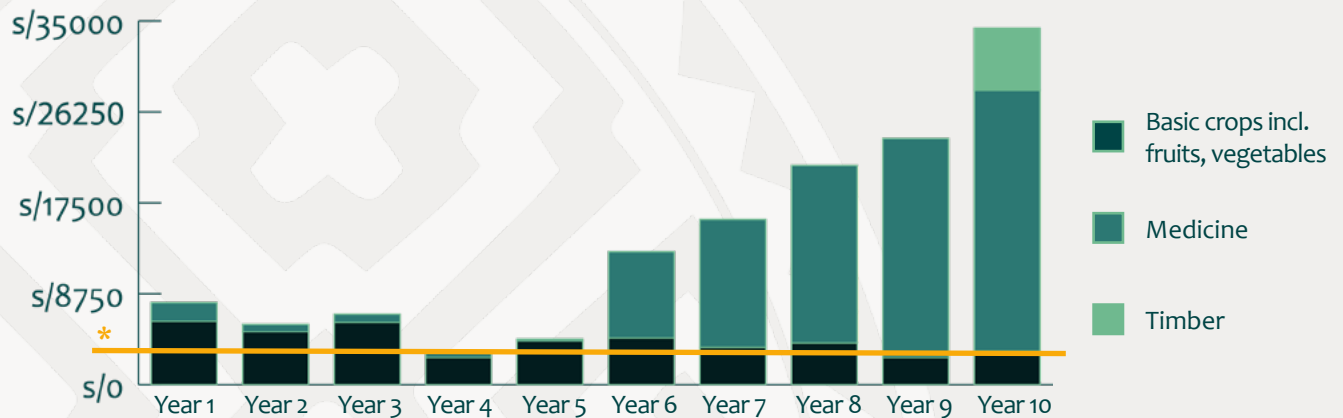
Our short-term goal is the creation of a network of 24 family-owned, community-based *chacras integrales* in communities near the Nanay river and Iquitos in the Loreto region of the Peruvian Amazon.

Our mid-term goal is to teach, support, and empower local farmers and communities in the Loreto and Ucayali regions of the Peruvian Amazon to acquire the skills and knowledge necessary to implement their own projects and diversify their income. Our aim is to promote systems that are economically and environmentally practical for the local communities that also ensure future supply of *ayahuasca* for local and international demand.

The Chaikuni Institute’s long-term goal is to inspire a widespread and highly effective new approach to small-scale farming for communities and by communities, creating a movement that regenerates the Amazon. The *Chacras Integrales Initiative* is designed to foster positive social, economic, and environmental change.

Chacra Integral Economic Model

Comparison of annual revenue / value of production of 1 hectare in a chacra integral vs. slash-and-burn



- Initial investment of 9,000 soles (~3,000 USD) for a one family plot of approximately one hectare for seed and plant inputs, materials, tools, communal work expenditures, and technical assistance from Chaikuni
- Return on investment in 2-3 years, meanwhile providing food security and resources for the family caring for the land
- Total expected income over 10 years is 136,316 soles (~40,000 USD)
- Over 10-years, farmer income increases 10-fold with a chacra integral
- After 10+ years, timber can be harvested for additional income (often referred to as the “retirement” fund by local Amazonian families)

* Slash-and-burn average annual income per hectare is ~3,250 soles

The multiple benefits of a chacra integral

Chaikuni's projections indicate that the economic advantages of developing a chacra integral are more economically viable than the traditional monoculture model for growing staple crops such as yucca. Communities who adopt the chacra integral model will yield significantly more than their average harvest through slash-and-burn farming. However, the benefits of a chacra integral go far beyond its economic returns. The implementation of chacras integrales will:

- Create sustainable income for rural families
- Bolster food security and sovereignty
- Regenerate and transform degraded landscapes into food forests
- Counter deforestation trends
- Repopulate, preserve, and protect ayahuasca and chacruna
- Support the preservation of cultural traditions
- Drawdown carbon and mitigate climate change
- Increase biodiversity
- Create wildlife corridors
- Provision of ecosystem services from flourishing and reclaimed forest landscapes
- Revive and conserve ancient ecological and spiritual practices

Progress to Date

2012

The Chaikuni Institute was founded. Permaculture master-plan developed. Early permaculture projects launched to reduce the Temple's environmental footprint and implement projects in local and Shipibo communities.



2012 to 2014

Development of permaculture experiments: fish farms, humanure, solar systems, rainwater collection, animal husbandry (chickens, ducks, guinea pigs, and snails), and cultivation of native and imported plant species. Installation of a permaculture project at a secondary school in a Shipibo community in the Ucayali region.



2017 to present

Increased focus on community outreach work in surrounding villages.



2016 to present

Ongoing cultivation and research into best practices for sustainable ayahuasca cultivation. 1,800 ayahuasca vines planted.



2018 to present

Beginning of Ayni Ayahuasca project with spotlight on chacras integrales and focus on growing ayahuasca. Installation of first, 1-hectare chacra integral demonstration plot at Chaikuni permaculture hub.



February 2019

First harvest of ayahuasca vines and chacruna plants grown on Temple land are prepared and shared in ceremonies at the Temple of the Way of Light.

May 2019

The first 10-day Permaculture Design Course (PDC) is held at Chaikuni's permaculture center for local farmers, Shipibo herbalists, and indigenous students, with a focus on permaculture design, chacras integrals, and sustainable ayahuasca cultivation.



By end of 2019

Chaikuni supported 16 mingas, which involved the participation of more than 150 community members, all of whom received permaculture training from Chaikuni staff. In the communities of Tres Unidos, Lupuna, and San Pedro, a total of approximately 6 hectares of land owned by local families had been transformed into diverse, productive, regenerative, and healthy agroforestry plots.



March 2020

A new, 10-day permaculture course was held with the participation of more than 30 local farmers, Shipibo herbalists, and indigenous students, with an in depth-focus on agroforesta (syntropic) farming (a higher yielding, regenerative, and productive technique of planting diverse food forests) to be included in our chacra integral system. Throughout the course, three such sample plots between 400-600m² each were installed in three of the surrounding villages of our permaculture center.



June 2019 to Present

Continuing with a core group of 10 local farmers who participated in the PDC, three full-day training sessions were held at the permaculture center to refresh and deepen knowledge gained during the PDC. Staff supported the participants to design and implement a chacra integral on their own land. Chaikuni further offered to support three mingas (communal work gatherings) for each Ayni Ayahuasca participant, where family and friends of the land-downer came together for a full day of communal labor in the field to get the chacras established and well underway.



January to February 2020

Three more mingas were held with local farmers to help establish their chacras integrals. Met with four community assemblies to discuss and agree on upcoming outreach work.



March - May 2020

The current lockdown incurred by the COVID-19 pandemic forces us to pause all field activities. Fortunately, a small team of local workers continues to supervise the development of our recently planted agroforesta in Tres Unidos, and we offer supervision and assistance by phone to the other two communities. The three recently planted agroforests are growing wonderfully!



The Power of Transformation

Each of our personal transformation lies at the core of a shift in consciousness that is taking place across the planet. Increased consciousness expands our ways of thinking and being and an innate eco-spiritual philosophy reveals itself from within. Following individual transformation, we are then called from a place of deep love and connection to participate in and contribute to global transformation.

In recent decades, people from far and wide have traveled to the Amazon rainforest seeking ayahuasca and Amazonian healing; benefiting physically, emotionally, and spiritually from these botanical technologies and from the techniques of traditional practitioners.

Many thousands of people across the planet have benefitted from ayahuasca and this number continues to grow exponentially. Although we all come from different countries, races, and religions, we are united by a common thread – our connection to ayahuasca and the Amazon. Whether we have drunk ayahuasca in the Amazon or not, the energies and spirits that have healed us, opened our hearts, and illuminated our paths, originate in the Amazon.



Pictures by Alienor de Sas

Standing in Solidarity with the People of the Amazon

As popularity in ayahuasca grows exponentially across the planet, we want to ensure that no matter where people are benefiting from the medicine, whether we are in the Amazon or anywhere in the world, that we appreciate the journey that ayahuasca has taken to reach out to us and that we reciprocate to its source and to the people who have cared for this sacred medicine for thousands of years.

“Ayni Ayahuasca is listening to the voices of the indigenous people of the Amazon Rainforest and to the message of ayahuasca, calling us to action and to peacefully stand in solidarity together”

Many thousands of people are looking beyond their personal narratives and realizing our fate and wellbeing is bound in the wellbeing of all creatures on Earth.

Recognizing and respecting Ayni is the next phase of our collective awakening if we are to survive and evolve as a human community.

Now is a pivotal time in history where we are witnessing people across the world coming together to support indigenous peoples’ rights to protect their homelands, cultures, and traditions. Ayni Ayahuasca is listening to the voices of the indigenous people of the Amazon Rainforest and to the message of ayahuasca, calling us to action and to peacefully stand in solidarity together.

For those of us working closely with and who have benefited profoundly from ayahuasca, we feel strongly that we have a deep responsibility to respect, preserve, and protect the Amazon, her indigenous people, their autonomy and sovereignty, and their ancient healing traditions.



“The time is now to unite our individual transformation with a global community that is truly united, through committed action with the people of the Amazon, and by supporting them to protect their profound healing traditions, medicines, and land – the birthplace of ayahuasca”

Partners and Allies



Temple of the Way of Light, Primary partner
Pioneering healing center near Iquitos



Tierra Martinez / The Ná Lu'Um
Permaculture Institute



OEPIAP - Organization of Students of
Indigenous Peoples of the Peruvian Amazon



UNAP - National University of
the Peruvian Amazon



ACELPA - Asociación Civil el
Puente de la Amistad, NGO



Shipibo Rao - Shipibo owned healing
center near Pucallpa



Niwe Rao Xobo - Shipibo owned
healing center near Pucallpa

Oni Xobo - Pucallpa based,
Shipibo-led NGO

Tres Unidos, San Pedro, Lupuna,
Santa Sofia, Cuyana - Rainforest
communities in river Nanay region

The Ayni Ayahuasca Team

Matthew Watherston, Founder



In February 2007, following a life-changing vision, Matthew established the Temple of the Way of Light - a pioneering Amazonian healing center with a key focus on respecting indigenous healing traditions and reciprocity with the Amazonian people and their environment. He founded Alianza Arkana in 2011, a non-profit partnering with indigenous people to support the preservation of their environment, rights, and traditions. In 2012, he founded the Chaikuni Institute, a non-profit focusing on permaculture, regenerative agriculture, and community based eco-social enterprise. Matthew has spent the last thirteen years in the Amazon and has a deep understanding of social and environmental issues in Peru as well as the complexities present in the blending of Western culture with traditional indigenous ways of life in the rainforest.

Stefan Kistler, Executive Director

Stefan holds an MSc in International Environmental Studies from the University of Ås (Noragric), Norway, and has been working for more than a decade in civil society organizations both internationally (Rainforest Foundation Norway) and locally (Arkana Alliance, the Chaikuni Institute), coordinating programs related to topics such as indigenous peoples' rights and conservation, intercultural education, and the use and sustainable management of tropical forests.



Silvia del Aguila Reyna, Permaculture and Community Outreach Coordinator

Silvia is a forestry engineer trained at the National University of the Peruvian Amazon (UNAP) and holds a Master's degree in aquatic resources with specialization in Aquaculture from the National University of San Marcos. She has worked on various projects with NGOs as well as state organizations (INRENA, IIAP, Latitud Sur), with a special focus on the management and conservation of biodiversity in the Nanay River basin, working with local communities on reforestation projects and chacras integrales.

Alan Christian Chumbe, Permaculture and Research Coordinator

Alan graduated as an Engineer in Tropical Forests Ecology from the Faculty of Forestry Sciences of the National University of the Peruvian Amazon. After several years of work in different institutions, Alan has been leading the research area in Chaikuni's Permaculture Program since 2017.



Carlos Mayatahuari Arimuya, Alfredo Asipali Gutierrez, Eliana Melendez Sangama, Santiago Aparicio Cahuachi, Elbis Heinz Mayatahuari Aquituari, Eder Baneo Pérez, Field Staff

Six staff members at Chaikuni's permaculture center, all residing in communities neighboring the permaculture site on the Rio Nanay.

José López Sánchez, Shipibo Onanya (Healer)

José López Sánchez is a Shipibo healer with 28 years of experience, coming from a lineage of powerful and well-respected healers dating back hundreds of years. He bridges the modern world with traditional Amazonian medicine and has spent periods of time traveling and healing local people in various rainforest communities as well as westerners in ayahuasca centers throughout South America.



Daniel López Pérez, Intercultural Education Coordinator

Daniel holds a degree in Environmental Sciences from the University of Granada (Spain) and has spent most of his professional career in the Peruvian Amazon working as a coordinator of development projects with indigenous communities (Kukama and Shawi), focusing on issues related to the sustainable management of natural resources, conservation, ecotourism, and small productive activities that contribute to improving the quality of life for local populations. Daniel has extensive experience advising community organizations, raising awareness, and strengthening capacities in environmental, productive, organizational, and participatory planning of local development.

Tierra Martinez, Na Lu'Um Permaculture Institute

Tierra Martinez is an internationally renowned permaculturalist with over 15 years of experience of teaching Permaculture Design Courses. Trained under the Permaculture Research Institute of Australia, he is the founder of the Ná Lu'Um Permaculture Institute and the host of the 2020 International Permaculture Convergence. In May 2019, Tierra and his partner Beatriz held the first Permaculture Design Course at Chaikuni's permaculture center. Ná Lu'Um will work with the Chaikuni Institute over the next four years to spread permaculture and chacras integrales to the communities surrounding the Chaikuni permaculture center and beyond



Sophia Rokhlin, Public Relations and Communications

Sophia is a public speaker, researcher, and educator advocating for the integration of indigenous ecological knowledge and voices within the modern healthcare paradigm and environmental policy. She is the co-author of *When Plants Dream* (Watkins, 2019) and has worked with a number of indigenous communities in the Amazon Basin, including the Secoya in the Ecuadorian Amazon and the Shipibo in Peru. She holds a BA in anthropology with a minor in religious studies and an MSc in Ecological Economics. Sophia has worked with a number of environmental nonprofits including the Rainforest Foundation US and the Rights of Nature Europe campaign.

Atossa Soltani, Advisor

Atossa is the founder and board president of Amazon Watch and served as the organization's first Executive Director for 18 years. Atossa is currently a senior strategist for the Amazon Sacred Headwaters Initiative, working to protect one of the most biodiverse ecosystems on Earth. The initiative is led by an alliance of Amazonian indigenous nations of Ecuador and Peru with support from Fundación Pachamama, Amazon Watch, and the Pachamama Alliance. Atossa served on the board of trustees of The Christensen Fund from 2008-2017 and was Board chair for five years.





Celebrating Life in Reciprocity: Get Involved!

**We have set an intention to raise \$100,000
to expand our Ayni Ayahuasca and Chakra Integrales Initiative**

This funding will enable the development of a full team, administration and operational costs for a year, the recruitment of a permaculture on-site manager, and support for the implementation of chakras integrales in Loreto (Phase One) and Ucayali regions (Phase Two) of the Peruvian Amazon.

Your help can make this vision a reality.
Please DONATE to the Chaikuni Institute and to a regenerative future in the Amazon.

www.chaikuni.org/donate