

Mutebox Dual Glass



Dual Glass or Dual Glass XL?
Get the Space You Need.

Light and Clarity

Create a light, open, and inviting sense of space with Mutebox Dual Glass – designed for modern workplaces where transparency and calm go hand in hand.

The front and back of the pod are crafted in acoustic glass, ensuring beautiful, natural light flow while maintaining a pleasant visual connection to the surroundings. The result is an elegant balance between privacy and openness, allowing you to work undisturbed without feeling closed off from the room.

The series is developed for focused work, confidential conversations, and private calls in a bright and harmonious work environment. The acoustic comfort reduces noise and enhances concentration and overall well-being throughout the day.

Mutebox Dual Glass is available in the classic One size or the more spacious Dual Glass XL, offering extra room and flexibility.

Designed, developed, and produced in Denmark with uncompromising quality, thoughtful functionality, and respect for fine craftsmanship.



Mutebox Dual Glass



Let the light flow through the original Mutebox.
A great match with our barstool.

Mutebox Dual Glass XL



A spacious one-person booth with natural light.
Add our barstool for a comfortable seating height and comfort.



Product Specifications

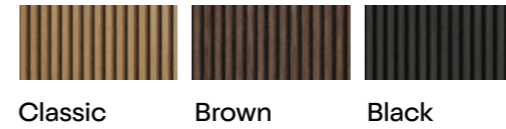
Mutebox Dual Glass



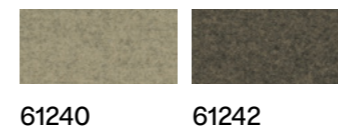
Variants

Exterior Materials

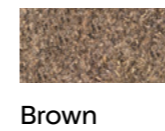
Wood



Gabriel Focus Melange

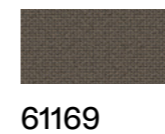


Søuld



Interior Materials

Gabriel Cura Loop



Product Specifications

People:
1 person

ISO:
ISO23351-1-12020

External Dimensions Incl. Handle:
W: 103.4 cm H: 223 cm D: 107 cm

Table Dimensions:
W: 70 cm H: 2 cm D: 35 cm

Table Distance to Floor:
105 cm

Weight:
250 kg

Connectivity:
Sockets: 1 × 230V
USB: 1 × USB-C

Light:
3 × LED spots

Ventilation:
167 m³/t

Chair:
Optional

Mutebox Dual Glass XL



Variants

Exterior Materials

Wood

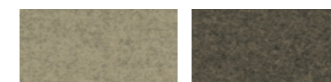


Classic

Brown

Black

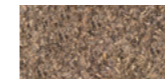
Gabriel Focus Melange



61240

61242

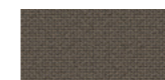
Søuld



Brown

Interior Materials

Gabriel Cura Loop



61169

Product Specifications

People:

1 person

ISO:

ISO23351-1-12020

External Dimensions Incl. Handle:

W: 103.4 cm H: 223 cm D: 145 cm

Table Dimensions:

W: 89 cm H: 2 cm D: 50 cm

Table Distance to Floor:

105 cm

Weight:

350 kg

Connectivity:

Sockets: 1 × 230V

USB: 1 × USB-C

Light:

4 × LED spots

Ventilation:

167 m³/t

Chair:

Optional

Contact

Email info@mutebox.dk
Phone +45 71 96 94 00

Monday – Thursday 08:00 – 16:00
Friday 08:00 – 15:30

Head Office Mutebox
Løversyssevej 1A
7100 Vejle
Denmark

Showrooms

Vejle Løversyssevej 1A
7100 Vejle

Aarhus TRÆ
Kalkværksvej 1-5
8000 Aarhus C

Copenhagen The Union Workspace Vesterport
Vester Farimagsgade 19
1606 Copenhagen