

LOXTON — WALK

MARYLEBONE W1

5 Loxton Walk, Marylebone W1

Flagship retail opportunity



Loxton Walk is a new destination in Marylebone providing 28,500 sq ft of flexible retail and restaurant space across 17 ground floor units. Four new avenues from George Street, Blandford Street and Baker Street will lead visitors into Loxton Walk, an open-air retail courtyard, designed to be a lively amenity for residents, office workers and public visitors.

5 Loxton Walk is a triple-fronted flagship retail opportunity within Loxton Walk, extending to 3,322 sq ft. Suitable for a brand looking to make a statement in Marylebone, this prominent retail opportunity also benefits from generous outside seating on the pedestrianised Walk.

5 Loxton Walk, Marylebone W1

Flagship retail opportunity

AREA
Ground floor
3,322 sq ft (GIA) / 309 sq m (GIA).

CEILING HEIGHT
3.25m.

There is a feature roof to the rear of the unit.
The ceiling height at the low point is 1.91m.
The gradient from the low point to the flat slab spans 2.15m.

PLANNING
Class E retail use.

LEASE TERMS
A new full repairing and insuring lease for a term to be agreed. Leases will be granted outside the provisions of the Landlord & Tenant Act 1954.

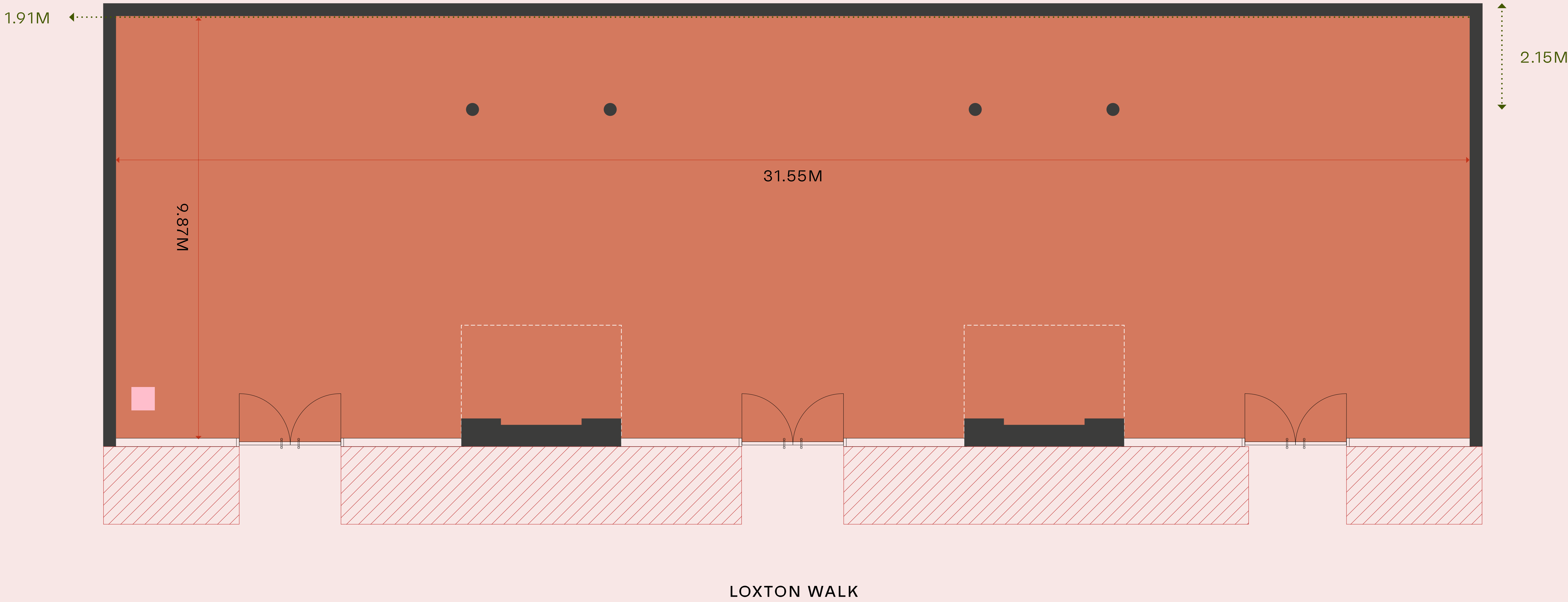
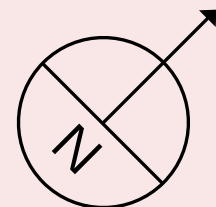
QUOTING RENT
£115,000 per annum exclusive.

BUSINESS RATES
Approximate rates payable: £68,500 per annum. Parties are advised to verify this figure with the local authority.

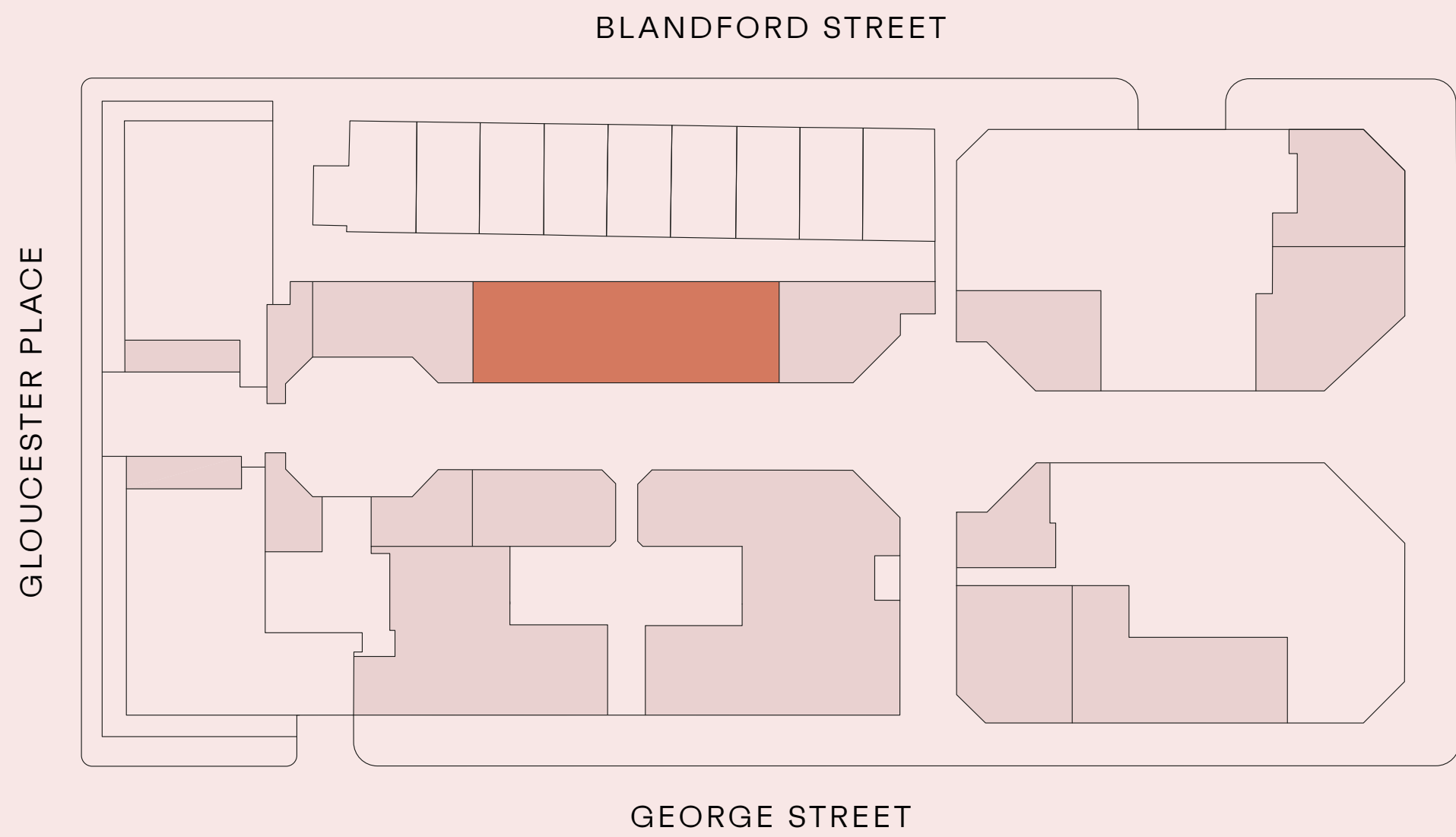
SERVICE CHARGE
Estimated at £6.50 psf.

EPC
Targeting A.

HANDOVER CONDITION AND POSSESSION
The premises will be ready for fitting out upon handover from The Portman Estate in Q1 2025.



- GROUND FLOOR
- FEATURE ROOF — REDUCED CEILING HEIGHT
- EXTERNAL SEATING AREA
- INDICATIVE TENANT PLANT ZONE
- SERVICES





PANDER'S

PANDER'S

PANDER'S

PANDER'S

PANDER'S

RANGER & CO.

RANGER & CO.

RANGER & CO.

RANGER & CO.

DELI & GROCERY

PANDER'S

Specification

HANDOVER SPECIFICATION

- The unit will be handed over in a shell and core specification, with capped off services.

FIT OUT APPROVAL

- Fit out plans will be subject to the Landlord’s prior written approval, by way of a Licence for Alterations.

FAÇADE AND GLAZING

- The external façade has been newly built as part of the redevelopment.
- The building has a brick façade with precast concrete features above ground floor level. The retail façade comprises high level ventilation louvres, framed glazing and three sets of double doors in a bronze PPC finish.
- All shopfronts are double glazed, with single glazed doors, to comply with BREEAM requirements.

EXTERNAL SEATING

- Potential outside seating area is shown on the floor plan.

FLOOR LOADING

- 5.00 kN/m² for live load + 1.0 kN/m² for partitions.

RAISED ACCESS FLOOR DEPTH

- The raised access floor depth is 235mm. Raised access flooring is to be installed by the Tenant.
- Floor depth measures from slab FFL to door threshold level, therefore the clear void is dependent upon the Tenant’s raised access floor detail.

SIGNAGE

- Signage will be permitted, subject to the Tenant obtaining the required planning consents and Landlord approval.
- Signage will be permitted only on the zones outlined in the drawings on page 6 and 7.
- External flag signage is illuminated metal measuring 430mm x 430mm.
- The graphics area of the flag signage is 280mm x 280mm.

ELECTRICAL SERVICES

- The electrical supply to the premises is fed by individual power supplies from the Landlord switchboards located at lower ground level. The power supply of 141.8 A / 98.1 kVA will terminate in an isolator located within the premises.
- Energy metering is provided and all meters are physically labelled to enable the building user to identify the end energy use.

GENERAL VENTILATION (FAÇADE LOUVRES)

- There are supply and exhaust louvres at high level (0.4m high) on the façade of the premises. Louvres have been designed to allow for 2L/s/m².
- These louvres will be blanked off on handover to maintain air tightness and thermal envelope.

HEATING AND COOLING SYSTEM

- An allowance of 100 W/m² of heating and 120W/m² of cooling has been made to determine the plant, louvre and servicing requirements for this restaurant.
- A condenser enclosure has been constructed within the restaurant, alongside the high level louvres for ventilation. There is also a vertical floor-to-soffit louvre for air intake and discharge from heating and cooling equipment.
- The on-floor plant is predominantly for heat rejection; the equipment is to be located behind the louvred façade which will draw in and discharge air.
- Acoustic louvres have been provided for the condenser units based on provisional plant selections to ensure a noise level no greater than 55dB(A) at 1m from the louvres.

WATER SUPPLY

- A metered boosted cold water supply with 32mm pipework. The water supply is submetered by the Landlord and charged by the Developer.

FOUL WATER DRAINAGE

- 100mm diameter foul water drainage stacks and vents with capped connections for gravity drainage, as shown on plan.
- 40mm diameter foul water drainage stacks and vents, with capped connections at the proposed condenser location.
- All grease capture equipment is to be installed by the Tenant as part of their fit out.

FIRE SAFETY SYSTEM

- A fire alarm interface unit will be provided within the unit, local to the services penetration from the lower ground level.
- As part of their fit out, the Tenant is to supply and install a bi-directional fire detection and alarm system for the unit, which is compatible with the Developer’s system and the cable connections to the Developer’s interface unit.
- The Tenant will install their own fire detection and alarm system as part of their fit out.

SPRINKLERS

- A sprinkler connection and zone check isolating valve will be provided. Each connection is to be monitored by the Developer’s fire alarm system.
- The Tenant will design, supply and install the sprinkler system within the units.

EMERGENCY LIGHTING

- The Tenant will be required to install their own emergency lighting to comply with the Developer’s requirements.

TELECOMMUNICATIONS

- Pathway has been provided from building intakes for the Tenant to order commercial telecom services from service providers to be cabled into their demise.
- Openreach, Hyper Optic and Virgin Media are connected into the lower ground incoming telecoms rooms.
- The unit is also provided with Hyperoptic Fibre to the premises infrastructure for broadband.

SECURITY

- The Tenant will be responsible for installing dedicated access control systems to their units if required.
- 24-hour site wide security will be provided by the Landlord.

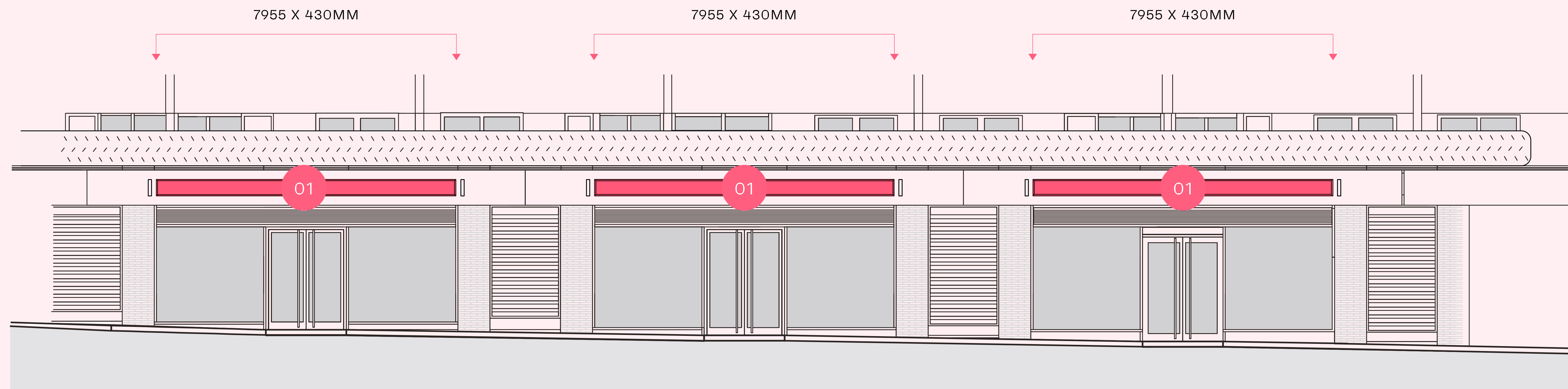
REFUSE

- All commercial Tenants will share the main waste room within 25 Baker St., at lower ground floor level. Access to the refuse room is via a dedicated goods lift.

END-OF-JOURNEY FACILITIES

- Dedicated end-of-journey facilities for staff are provided at lower ground level, accessed via street level cycle lift on George Street.
- Facilities include 5 shower cubicles, 5 WCs, 44 half-height lockers and 34 secure cycle spaces.

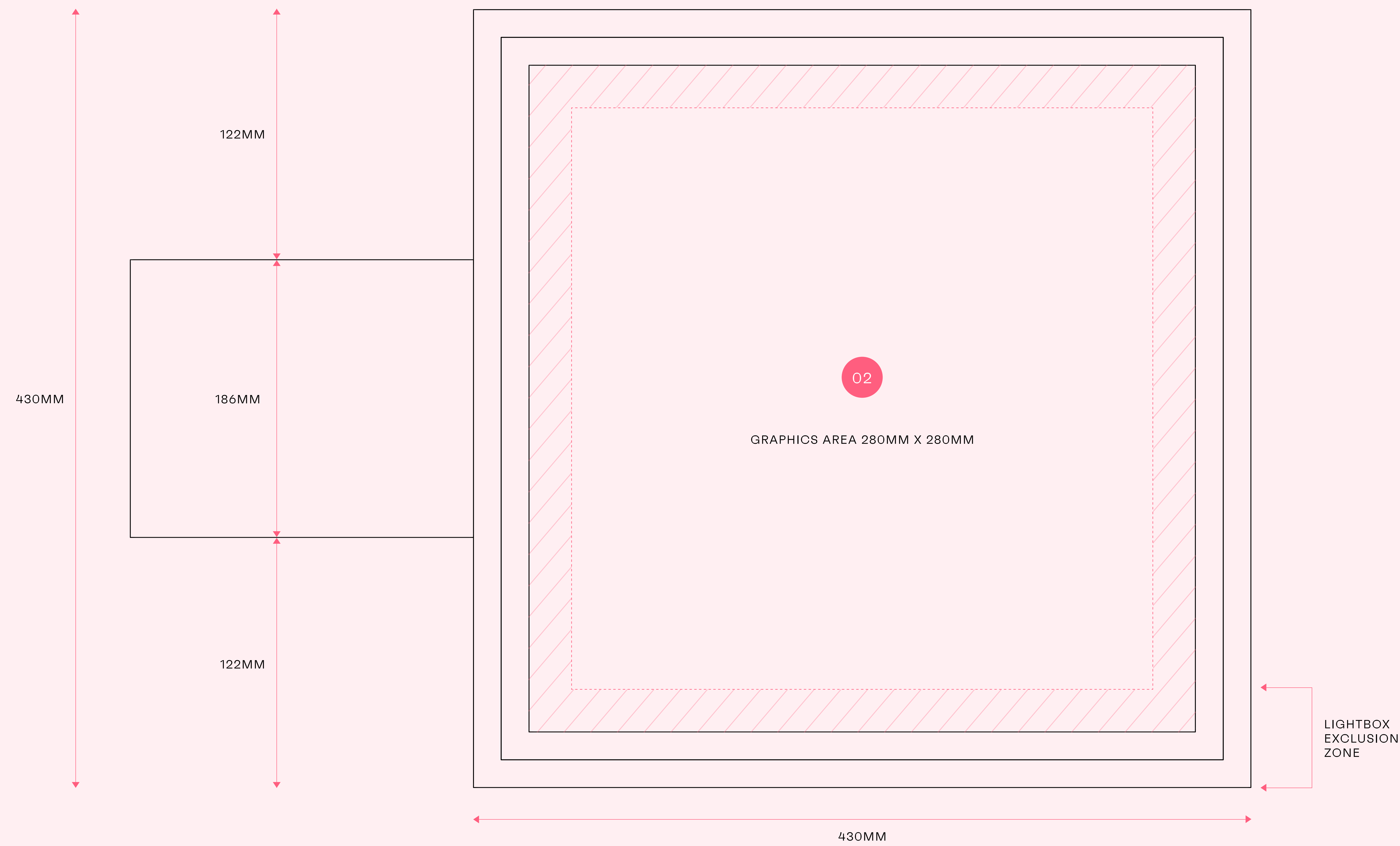
Signage zones



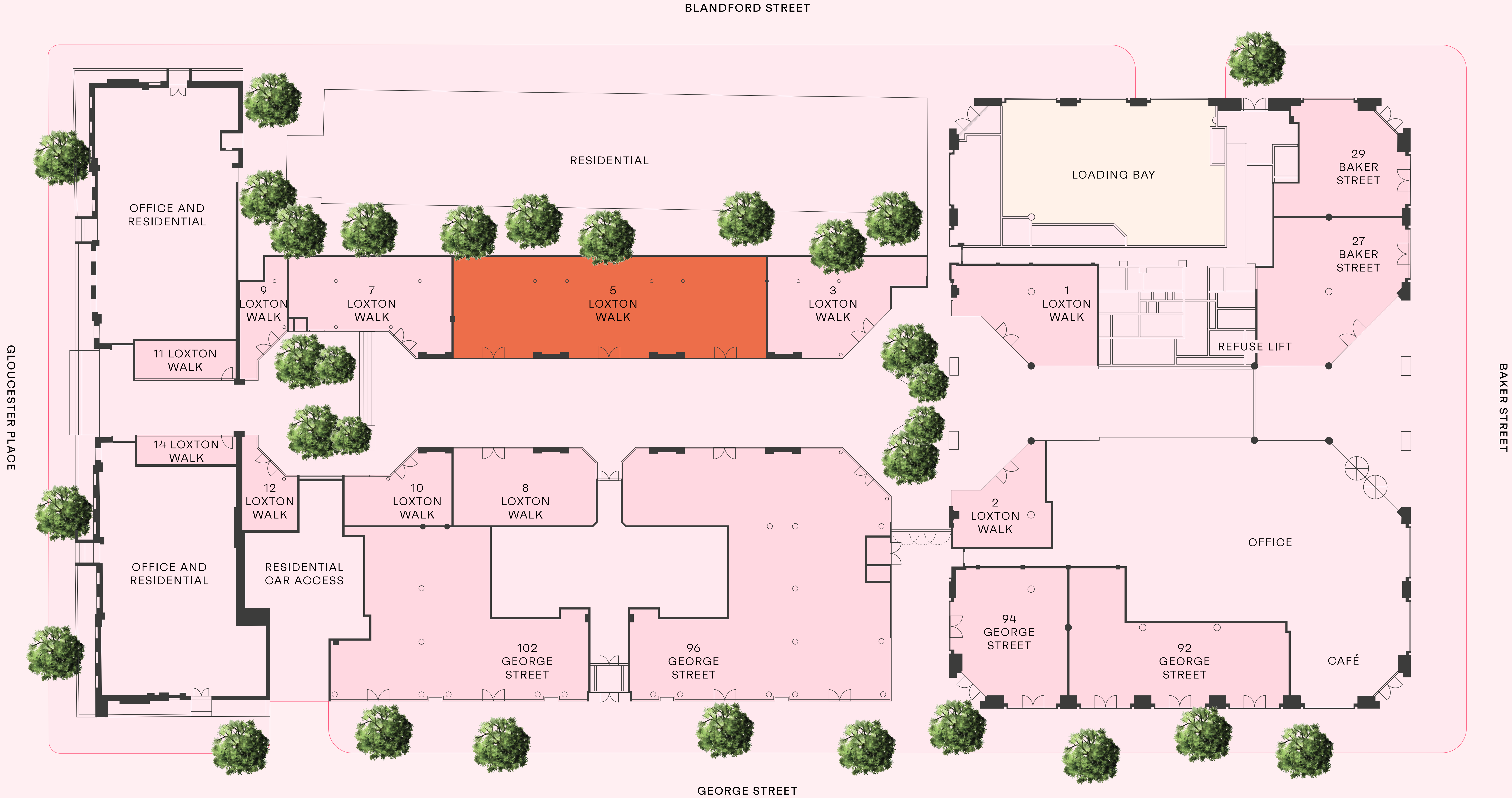
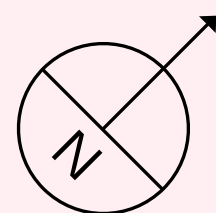
VIEW FROM LOXTON WALK

- 01. FAÇADE SIGNAGE
- 02. FLAG SIGNAGE

Signage zones



Servicing and loading bay plan



DELIVERIES

All units within the development share the main loading bay accessed from Blandford Street. This area contains a total of three loading bays (2 x 8m and 1 x 6m).
The loading bays have a clear height of 4.5m and the maximum size vehicle permitted to enter is 8m in length. Goods should then be distributed from the loading bay to the front of the premises via trolleys or on foot. Further information about the servicing can be found in the servicing management plan.

● 5 LOXTON WALK

Agents

KENNINGHAM RETAIL

Hannah Barter
hannahb@kenninghamretail.com
07753 312 591

Mark Serrell
marks@kenninghamretail.com
07885 389 435

George Griffiths
georgeg@kenninghamretail.com
07496 825 631

BRUCE GILLINGHAM POLLARD

Charlotte Roberts
charlotte@brucegillinghampollard.com
07738 448 338

Lizzie Knights
lizzie@brucegillinghampollard.com
07511 902 073

Lucy Cope
lucy@brucegillinghampollard.com
07595 267 866

loxtonwalk.com

ANTI-MONEY LAUNDERING REGULATIONS

Under Anti Money Laundering Regulations, we are obliged to verify the identity of a proposed occupier once a letting has been agreed and prior to instructing solicitors. This is to help combat fraud and money laundering and the requirements are contained in statute.



MISPRESENTATION ACT

Whilst every effort has been made to ensure accuracy, no responsibility is taken for any error, omission or mis-statement in these particulars which do not constitute an offer or contract. No representation or warranty whatever is made or given either during negotiations or in particular by the vendor, lessors or agents Kenningham Retail and Bruce Gillingham Pollard. All figures are exclusive of rates, service charge, VAT and all other outgoings. The agents have not tested the services. All floor areas are approximate. Date of preparation August 2024.



  portmanestate.co.uk

DERWENT
LONDON

     derwentlondon.com