

# LOXTON — WALK

MARYLEBONE W1



# 2 Loxton Walk, Marylebone W1

Retail opportunity



Loxton Walk is a new destination in Marylebone providing 28,500 sq ft of flexible retail and restaurant space across 17 ground floor units. Four new avenues from George Street, Blandford Street and Baker Street will lead visitors into Loxton Walk, an open-air retail courtyard, designed to be a lively communal amenity for residents, office workers and public visitors.

2 Loxton Walk is a 674 sq ft retail opportunity benefiting from generous floor-to-ceiling heights and a prominent glazed frontage. The unit also enjoys the benefit of generous outside seating within the new courtyard.



# 2 Loxton Walk, Marylebone W1

Retail opportunity

## AREA

Ground floor  
674 sq ft (GIA) / 64 sq m (GIA).

## CEILING HEIGHT

5.58m.

## PLANNING

Class E retail use.

## LEASE TERMS

A new full repairing and insuring lease for a term to be agreed. Leases will be granted outside the provisions of the Landlord & Tenant Act 1954.

## RENT

£45,000 per annum exclusive.

## BUSINESS RATES

Approximate rates payable: £23,910 per annum. Parties are advised to verify this figure with the local authority.

## SERVICE CHARGE

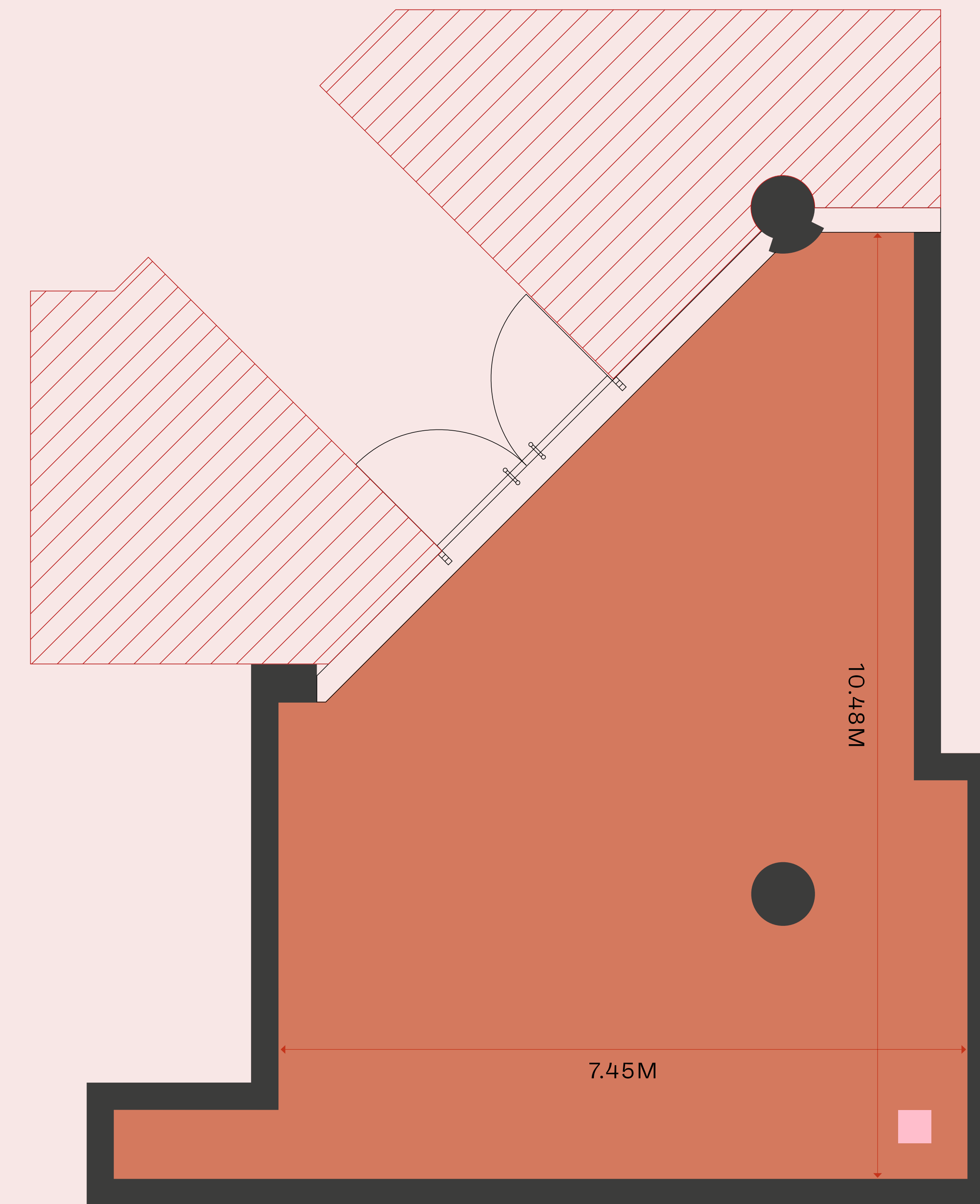
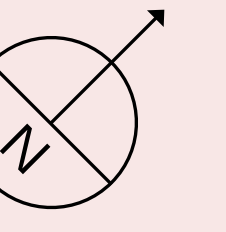
Estimated at £3.00 psf.

## EPC

Targeting A.

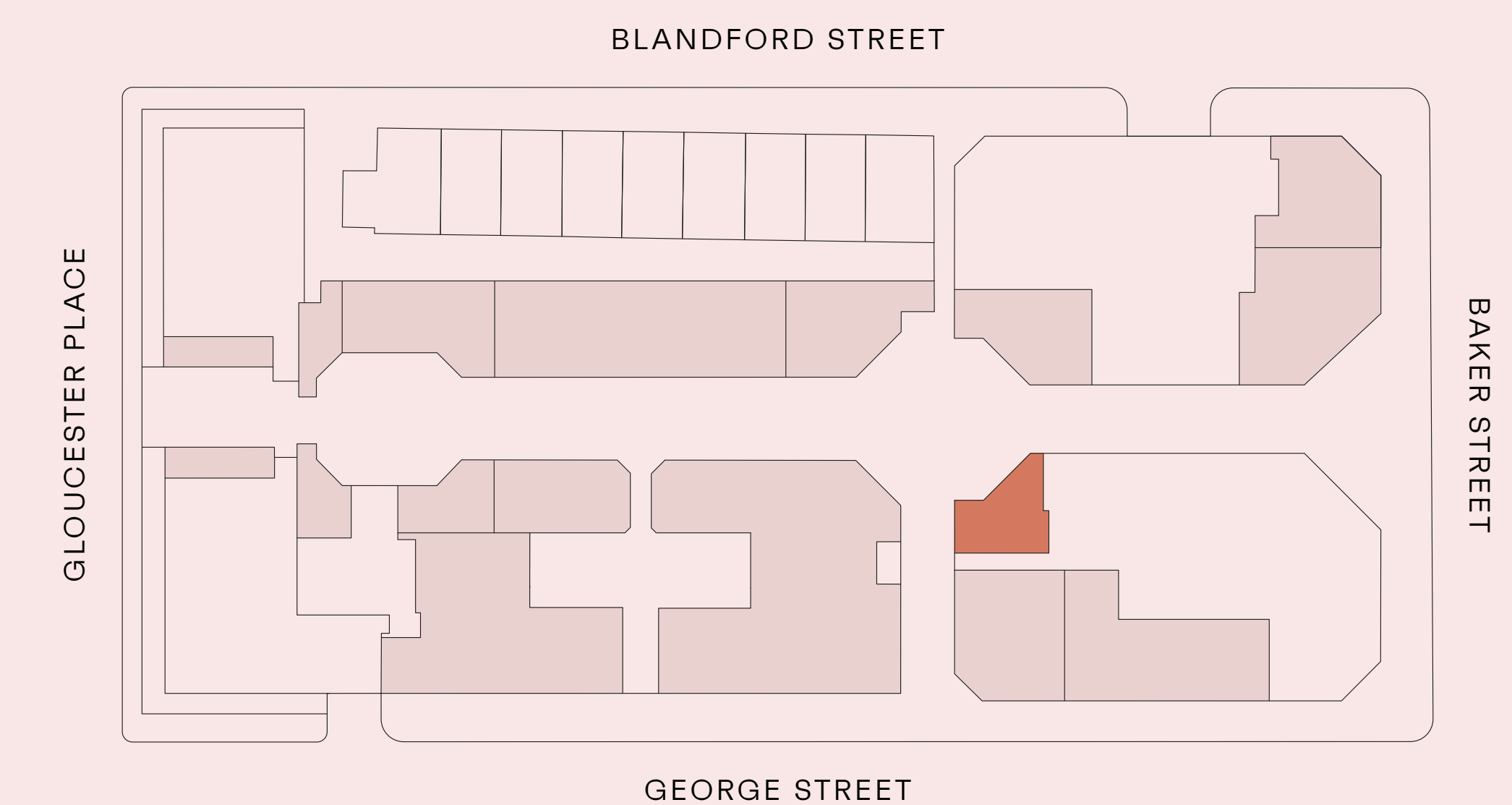
## HANDOVER CONDITION AND POSSESSION

The premises will be handed over in a shell and core condition, ready for fitting out upon handover from Derwent London in Q1 2025.



GEORGE STREET

- GROUND FLOOR
- EXTERNAL SEATING AREA
- SERVICES







THE GEM

THE CUT

THE GEM



# Specification

## HANDOVER SPECIFICATION

- The unit will be handed over in a shell and core specification, with capped off services, as shown on plan.

## FIT OUT APPROVAL

- Fit out plans will be subject to the Landlord's prior written approval, by way of a Licence for Alterations.

## FAÇADE AND GLAZING

- The external façade has been newly built as part of the redevelopment.
- The building envelope generally includes precast panel cladding/stone cladding and a glazed stick system.
- All shop fronts are double glazed, with single glazed doors, to comply with BREEAM requirements.

## EXTERNAL SEATING

- Potential outside seating area is shown on the floor plan.

## FLOOR LOADING

- 4.00 kN/m<sup>2</sup> for live load + 1.0 kN/m<sup>2</sup> for partitions.

## SIGNAGE

- Signage will be permitted, subject to the Tenant obtaining the required planning consents and Landlord approval.
- Signage will be permitted only on the zones outlined in the drawing on page 6.

## ELECTRICAL SERVICES

- The electrical supply to the unit is fed by individual power supplies from the Landlord switchboards located at lower ground level. The power supply of 100 A / 69.3 kVA will terminate in an isolator located within the retail demise.
- Energy metering is provided and all meters are physically labelled to enable the building user to identify the end energy use.

## GENERAL VENTILATION (FAÇADE LOUVRES)

- There are supply and exhaust louvres at high level on the façade of the retail.
- These louvres will be blanked off on handover to maintain air tightness and thermal envelope.

## HEATING AND COOLING SYSTEM

- Space has been allocated on the mezzanine of the loading bay for future retail units on the ground floor of Baker St. to install VRF condensers.
- Ventilation shall be via the façade strip louvres at high level. The Tenant shall install their own ventilation equipment.

## WATER SUPPLY

- A metered boosted cold water supply with 54mm pipework. The water supply is submetered by the Landlord and charged by the Developer.

## FOUL WATER DRAINAGE

- 100mm diameter foul water drainage stacks and vents with capped connections for gravity drainage, as shown on plan.
- All grease capture equipment is to be installed by the Tenant as part of their fit out.

## EMERGENCY LIGHTING

- The Tenant will be required to install their own emergency lighting to comply with the Developer's requirements.

## FIRE SAFETY SYSTEM

- Two fire alarm interfaces to the future standalone retail fire alarm systems will be provided for each individual unit for communication to/from the landlord fire alarm system.
- The Tenant will install their own fire detection and alarm system, which is to be compatible with the Developer's system and interface units.

## SPRINKLERS

- A sprinkler connection and zone check isolating valve will be provided. Each connection is to be monitored by the Developer's fire alarm system.
- The Tenant will design, supply and install the sprinkler system within the units.

## TELECOMMUNICATIONS

- Pathway has been provided from building intakes for the Tenant to order commercial telecom services from service providers to be cabled into their demise.
- Hyperoptic are connected into the lower ground incoming telecoms rooms.
- The unit is also provided with Hyperoptic Fibre to the premises infrastructure for broadband.

## SECURITY

- The Tenant will be responsible for installing dedicated access control systems to their units if required.
- 24-hour site wide security will be provided by the Landlord.

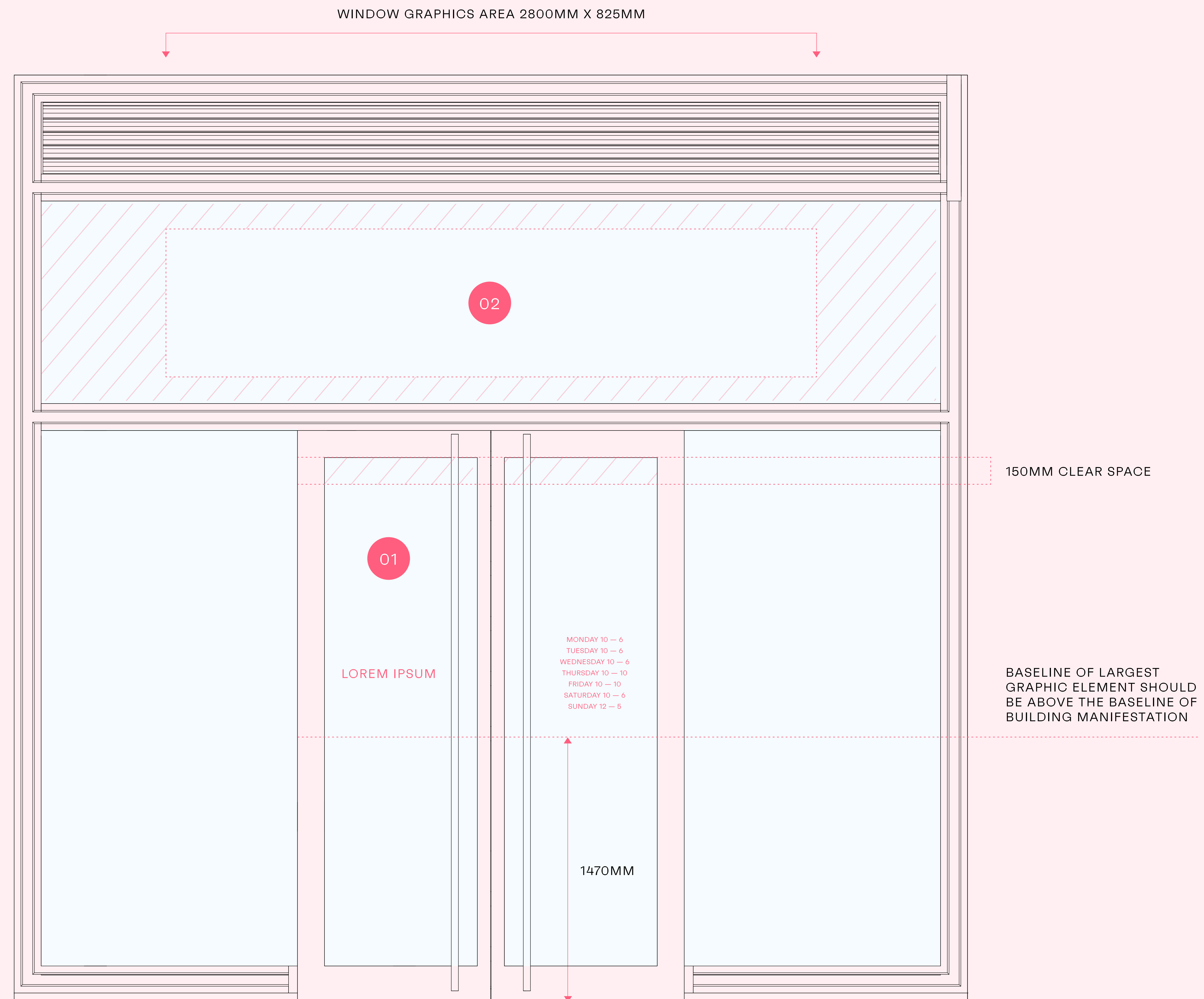
## REFUSE

- All commercial Tenants will share the main waste room within 25 Baker St., at lower ground floor level. Access to the refuse room is via a dedicated goods lift.

## END-OF-JOURNEY FACILITIES

- Dedicated end-of-journey facilities at lower ground level including 3 showers (2 male, 1 female), 42 lockers and 34 secure cycle spaces.

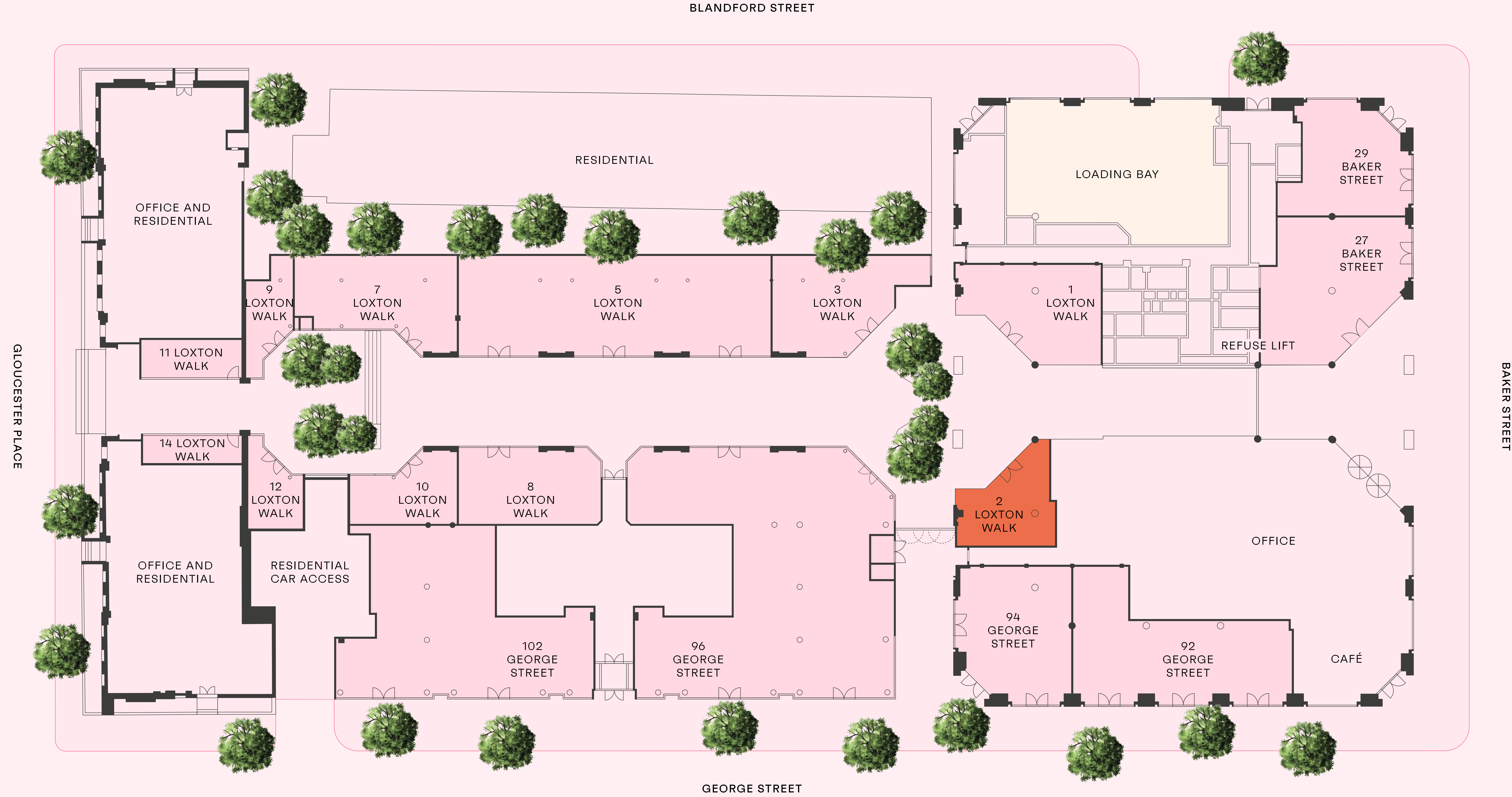
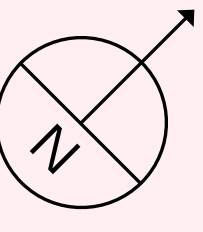
# Signage zones



- 01. DOOR SIGNAGE
- 02. WINDOW SIGNAGE



# Servicing and loading bay plan



## DELIVERIES

All units within the development share the main loading bay accessed from Blandford Street. This area contains a total of three loading bays (2 x 8m and 1 x 6m).

The loading bays have a clear height of 4.5m and the maximum size vehicle permitted to enter is 8m in length. Goods should then be distributed from the loading bay to the front of the premises via trolleys or on foot. Further information about the servicing can be found in the servicing management plan.

● 2 LOXTON WALK



# Agents

## KENNINGHAM RETAIL

Hannah Barter  
hannahb@kenninghamretail.com  
07753 312 591

Mark Serrell  
marks@kenninghamretail.com  
07885 389 435

George Griffiths  
georgeg@kenninghamretail.com  
07496 825 631

## SAVILLS

David Bannister  
david.bannister@savills.com  
07974 756 759

Andrew Gibson  
andrew.gibson@savills.com  
07596 090 058

George Collison  
george.collison@savills.com  
07590 329 557

loxtonwalk.com



## ANTI-MONEY LAUNDERING REGULATIONS

Under Anti Money Laundering Regulations, we are obliged to verify the identity of a proposed occupier once a letting has been agreed and prior to instructing solicitors. This is to help combat fraud and money laundering and the requirements are contained in statute.

## MISPRESENTATION ACT

Whilst every effort has been made to ensure accuracy, no responsibility is taken for any error, omission or mis-statement in these particulars which do not constitute an offer or contract. No representation or warranty whatever is made or given either during negotiations or in particular by the vendor, lessors or agents Kenningham Retail and Savills. All figures are exclusive of rates, service charge, VAT and all other outgoings. The agents have not tested the services. All floor areas are approximate. Date of preparation August 2024.



  portmanestate.co.uk

DERWENT  
LONDON

     derwentlondon.com