



RESERVE HANDLE INFORMATION

The following advice applies, in our opinion, to ALL brands of wingsuits and ALL wingsuit pilots. We present this information to wingsuiters so that they can make a more informed decision on emergency handle choice.



MOST RECOMMENDED

In our opinion, the **standard pillow handle** reserve and main cutaway handles are the best choice for wingsuit flying. The square corners provide a better “stop” for the suit surface, and this type of handle is least-likely to be “swallowed” by your wingsuit (any brand) or knocked loose by the suit surface. Ensure the Velcro attachment is appropriately secure, to reduce the chances of it being knocked loose by the suit surface.

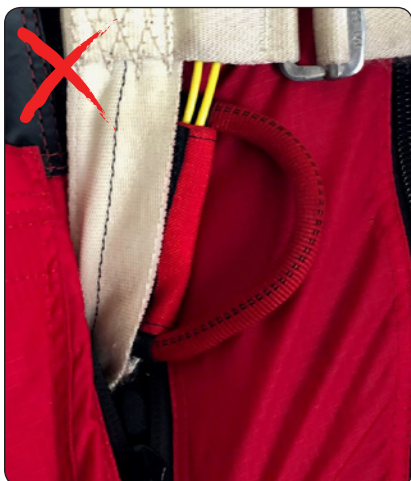


ACCEPTABLE, BUT...

While the **steel D-handle** is acceptable, we suggest that you consider a pillow handle. The steel D-handle is narrower, typically has a rounded bottom corner, and is more easily detached from its Velcro seating. This creates sub-optimal conditions specific to wingsuit flying:

1. The smooth and narrow handle edge will slide into the suit (be “swallowed”) more easily.
2. The handle can be knocked loose from its attachment more easily due to the less-secure Velcro attachment.

Our experience suggests that the pillow handle is superior for wingsuit use in general. We do recognize the clear benefits of a D-handle (significantly easier to grasp), and choosing a pillow instead is a personal decision.



DO NOT USE

The **soft D-handle** is rare, but can be found on some older harness-container systems. This type of handle is not appropriate for use with any wingsuit and should be prohibited. The angled bottom edge and soft collapsible handle make this handle type the most easily “swallowed”. **Never use this type of reserve handle with any wingsuit type or make.**