

Progress Report

Lumley Road, Salt Spring Island

One year ago, your generous support helped to secure the future of Lumley Road, a vital ecological treasure on Salt Spring Island. Today, we are thrilled to share the incredible progress your investment has made possible in protecting this beautiful area, forever.



Management Planning: Laying the Groundwork

We've begun the important work of shaping a long-term vision for the Lumley Road site, guided by ecological, cultural, and community values.

Early steps included:

- Initial site visits by BC Parks Foundation staff
- Identification of interested community groups and landholders
- Development of guiding principles for stewardship
- Early planning for outreach to local partners
- Consideration of options for ecological protection and low-impact public access

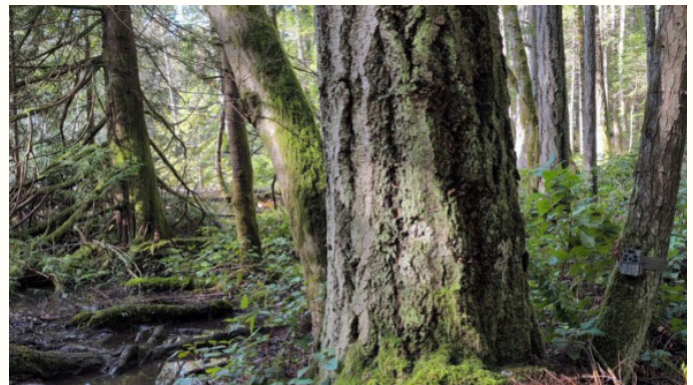
Stewardship in Action: What's Happening on the Ground

First Land Planning & Stewardship Visit – February 28

The first Land Planning & Stewardship visit was conducted by BC Parks Foundation staff. We met with a neighboring landowner to gather local ecological knowledge and demonstrated how to use iNaturalist, a community science tool, to support long-term monitoring. We installed two camera traps help track movement, species diversity, and breeding activity. These also record phenological shifts—seasonal changes in vegetation over time. The images give insight into the effects of climate change on local ecosystems. We are excited to gather the first footage in Fall 2025.

Protecting biodiversity starts with careful planning. Every decision is being made with the forest's future in mind.

*Griffin Slimkowich, BC Parks Foundation's
Manager, Land Planning and Management*



Community Science Coordinator Coni Rivas taking iNaturalist observations and installing a wildlife camera on the Lumley Road site in late Winter 2025. Camera can be seen on the right of the large Douglas Fir tree.

What We're Seeing So Far

iNaturalist Observations

Taxon	Number Identified	Yellow / Blue Listed in BC
Amphibia	1	
Fungi	14	6
Mammalia	1	
Protozoa	2	2
Plantae	16	9
Mollusca	1	1
Reptilia	1	1

Blue and yellow-listed species are conservation categories in B.C. A blue-listed species is of special concern because its population is declining or facing threats, while a yellow-listed species isn't at risk but is still monitored to keep it that way.



A notable sighting by The Nature Educator—uploaded to iNaturalist—of a Northern Red-legged Frog, a species of concern and a sensitive indicator of environmental health, highlights the vital role of community science.

Seeing species at risk thrive here is proof that this land is special. Every single iNaturalist upload is part of the bigger picture.

Coni Rivas, BC Parks Foundation's Community Science Coordinator

Birds & Forest Health

- Forest is mature and in good condition
- Bird inventory recorded:
 - o Downy Woodpecker
 - o Golden-crowned Kinglet
 - o Red-breasted Nuthatch
 - o Brown Creeper
 - o Pacific Wren
 - o American Robin
 - o Pine Siskin
 - o Dark-eyed Junco
 - o Song Sparrow
- Many signs of Pileated Woodpeckers observed
- Warblers were still in southern parts of the continent and will return in Spring
- Bird list submitted to eBird to contribute to regional datasets



Ecological Highlights

Here are some fascinating finds from our early stewardship work:

- **Wrinkled Crust Fungus** (*Phlebia radiata*) – wood decomposer
- **Western Sword Fern** (*Polystichum munitum*) – visible spore clusters
- **Ochre Cushion Fungus** (*Trichoderma pulvinatum*) – a nutrient cycler
- **Pacific Banana Slug** (*Ariolimax columbianus*) – nutrient recycler
- **Northern Red Belt Fungus** (*Fomitopsis mounceae*) – forest characteristic
- **Western Redcedar** (*Thuja plicata*) – iconic of Pacific forests



Trail Safety & Access

- Two caution signs have been installed near creek-crossing bridges
- One bridge is flagged for removal; with local volunteers engaged
- Currently seeking donors, volunteers and contractors for bridge replacement or trail rerouting

What's Up Next?

A community survey will be coming soon for interested individuals and community groups to identify specific long-term conservation values on this beautiful land. We look forward to sharing these updates with you.

Thank You

One year in, and this incredible Salt Spring Island property continues to surprise and inspire us. Its beauty, biodiversity, and ecological value are even greater than we imagined! Our team has loved spending time on the land—and connecting with you, the community that made its protection possible. Your support means the forests, wetlands, and species that call this place home will be here for future generations to enjoy. Thank you for helping to keep BC beautiful for now, for all, for always!

Contact Us

Kaela McDowell, Director, Individual & Corporate Giving
kaela.mcdowell@bcpf.ca