

AFRICAN SHIFTS

The Africa Climate Mobility Report

PRESENT REALITIES

People-positive adaptation that anticipates and plans for climate mobility is urgent to strengthen the resilience of its people and institutions amidst the climate crisis.

01 Living in Hope

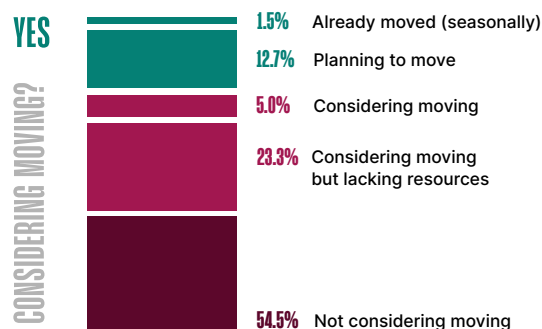
Many Africans remain hopeful and optimistic for their futures, even as they experience the reality of the climate crisis.

03 Women at the Forefront

Climate stressors increase the burden on African women who indicate greater reluctance to move than men.

02 Rooted in Land and Culture

Most Africans prefer to stay where they live despite growing climate risks. Most Africans do not consider moving while many lack the means to move even if they want to.



Climate mobility aspirations and capabilities

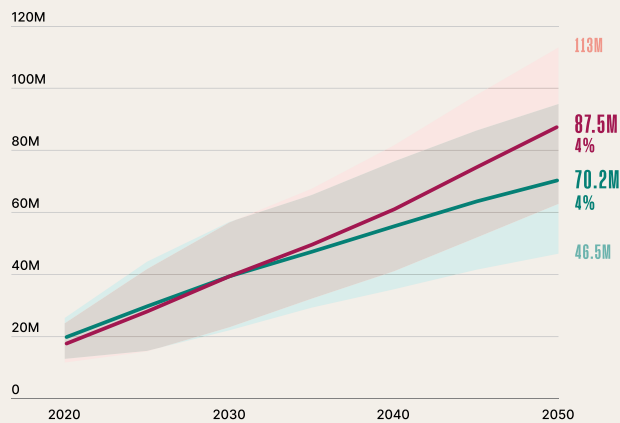
04 The Next Generation

Young Africans are more likely to embrace moving and can lead the way in harnessing climate mobility in a more connected continent. **Two out of every five** African youth consulted, think of mobility as normal and sometimes even aspirational. Almost one in five have concrete plans to move.

05 Escalating Loss and Damage

Deteriorating living conditions will eventually force people to abandon areas where climate impacts are no longer tolerable. Yet, a potentially worse outcome would see people stranded in place leaving them highly exposed and vulnerable to increasingly hazardous climatic conditions.

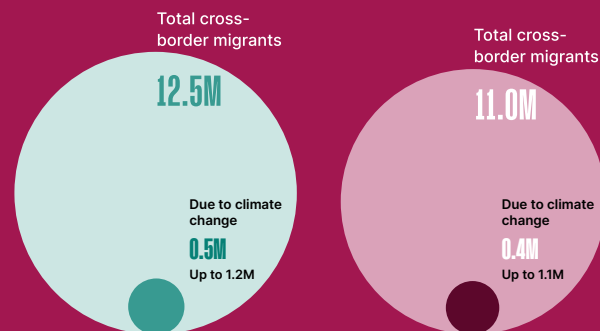
140M Internal climate migrants



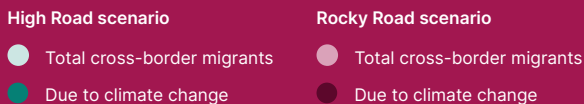
Internal climate mobility in Africa under high GHG emission scenarios (and % over total population)



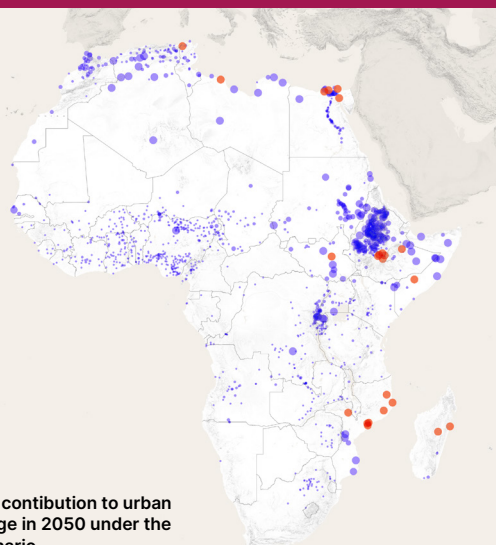
Source: ACMI Africa Climate Mobility Model, 2022.



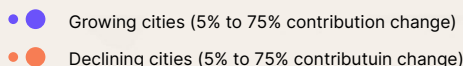
Cross-border mobility by 2050 in Africa



Source: ACMI Africa Climate Mobility Model, 2022.



Climate mobility contribution to urban population change in 2050 under the Rocky Road scenario



Source: ACMI Africa Climate Mobility Model, 2022.
The size of circles ranges between 5 and 75% contribution of climate migration to population change.

FUTURE PROJECTIONS

06 On the Move, but Close to Home

By 2050, **some 5%** of Africa's population – between **70 and 88 million** people, with a **potential high of 113 million** – are forecast to be on the move within their home countries due to climate impacts, part of a larger trend of increased mobility in the continent.

07 Inclusive Development will Reduce Climate Mobility

An inclusive and resilient development pathway could reduce the number of people likely to be displaced by climate impacts.

08 Cross-border Climate Mobility a Fraction of Internal

Across the continent, climate change is predicted to drive up to **1.2 million** people to move across national borders by 2050. This will contribute about 10 percent of total likely cross-border migration of 11 to 12 million people by 2050. **Southern Africa** is expected to see the **largest increase** in cross-border mobility due to climate change impacts, with between 200,000 to 800,000 people potentially moving to a neighbouring country by 2050.

09 Cities are Climate Mobility Hubs

Africa's cities will grow swiftly as urbanisation trends continue, although climate impacts could force up to **4.2 million people** out of urban areas in the continent by 2050. Casablanca, Accra, and Abidjan are among the cities projected to see people leave due to climate impacts. In most small African cities and towns, climate mobility will add to population growth. Khartoum, Maputo, Goma, Tripoli, and Kigali also emerge as important climate mobility destinations in the continent.

10 Climate Mobility Hotspots by 2050



In **East Africa**, the IGAD region (an area of 5.2 million km² that comprises the countries of Djibouti, Eritrea, Ethiopia, Kenya, Somalia, South Sudan, Sudan, and Uganda) could see up to **10%** of its population, some **55 million** people, forced to move within their countries due to climate impacts.



Pastoral Areas are predicted to see large population shifts as result of climate impacts. At a continental level, and across the different high emissions scenarios, Africa's pastoral areas are forecast to see a net outward movement of people of around 4 million by 2050. At the high end, pastoral areas in **Rwanda** could see around **3 million** people leave due to adverse climate impacts. Meanwhile, the population in **Ethiopia's pasturelands** could grow by **279,000 people** due to climate mobility.



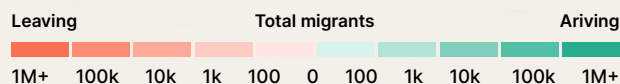
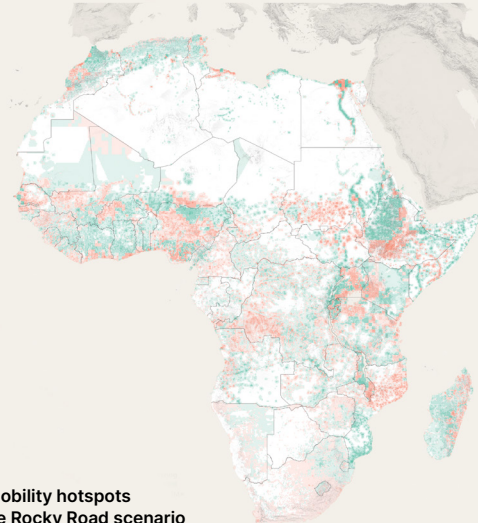
Coastal areas could lose up to **2.5 million** people due to steady sea level rise and other climate stressors by 2050. Adaptation efforts could offset these climate impacts and enable people to stay.



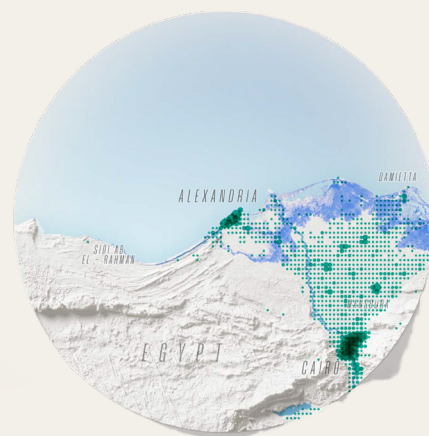
At a continental level, the areas surrounding national borders will largely see an outflow of people in response to climate disruption. However, some border areas will be attractive for many people, such as the **Ethiopian side** of the Ethiopia-Somalia border, which could see up to **1.4 million** new arrivals. Other notable **climate mobility destinations** include the borderlands between Rwanda, DRC, and Uganda; between Eritrea, Sudan, and Ethiopia; Somalia's border with Kenya; Mozambican borderlands with Eswatini and South Africa; and Nigeria's borderland with Niger.

11 Affected but Unprepared

African borderlands are projected to see some of the **largest** in and out movements due to climate change. Yet in some of these areas, very few people – less than **10%** – are aware that climate change is changing their environment, pointing to the need for more climate literacy and information. Unplanned climate mobility can result in new risks and vulnerabilities.



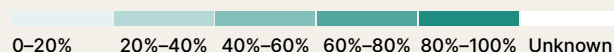
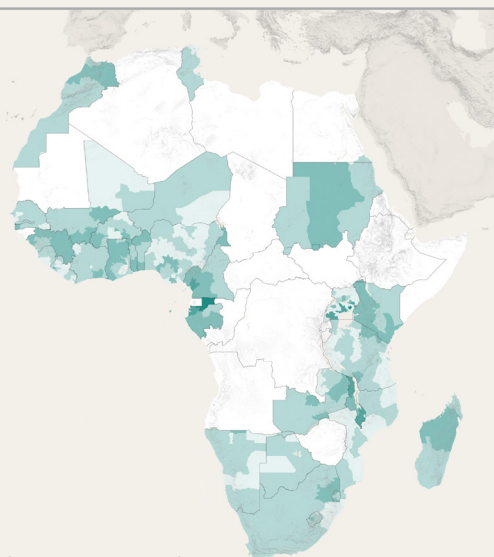
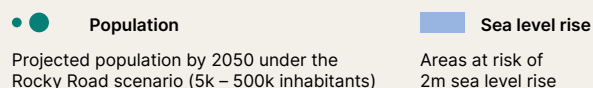
Source: ACMI Africa Climate Mobility Model, 2022.



5.3M

5.3 million people projected to live in Alexandria face projected risks from sea level rise

ALEXANDRIA, EGYPT



Source: Simpson et al., 2021.

AGENDA FOR ACTION

Shaping People Positive Adaptation

By preparing its people and institutions and investing in resilience, Africa can harness climate mobility to help communities and countries adapt and prevent loss and damage from climate change. Harnessing climate mobility could also prove a unique opportunity to consolidate regional integration, drive development under more severe climatic conditions, and further common growth on the continent.

PLAN FOR MOBILITY

Action 1 Anticipate and plan for climate mobility

Anticipate and plan for climate-forced displacement and migration, including permanent relocation, to foster social cohesion in affected communities, prevent involuntary immobility, drive economic growth, sustain peace, and protect people on the move.

Action 2 Integrate climate mobility in climate action and finance commitments

Recognise and support mobility as a legitimate strategy for climate adaptation in local, national, regional, and international policies, and build cross-sector partnerships to support people and communities in staying, moving, and receiving.

EMPOWER PEOPLE

Action 3 Inform people of climate risks

Enhance public understanding of climate risks and threats, including through building climate change literacy, the co-production of actionable climate information services and access to early warnings, to support informed decisions on how to adapt, whether and when to move, and where to settle.

Action 4 Amplify women's agency

Empower women with climate information, adaptive skills, social and legal protection to bolster their agency in decisions on climate adaptation and in climate mobility.

Action 5 Harness the ambitions of the youth

Foster and leverage the creativity and potential of Africa's already-mobile youth, to build resilience, economic prosperity, and advance the green transition.

TRANSFORM DEVELOPMENT

Action 6 Build from the local

Pursue community-led solutions for climate-resilient development, disaster response and climate mobility across the continent, and invest in locally anchored climate adaptation and resilience pathways, including strong connections in border areas.

Action 7 Invest in resilient and connected cities

Enable cities with the actionable data, financial and technical resources — and the political agency needed to facilitate planned, resilient and inclusive urban growth, social inclusion and social protection — while building stronger ties across cities, and between cities and rural areas and economies.

Action 8 Pursue nature-positive development

Manage land, water, and other shared natural resources cooperatively and sustainably to support agricultural and ecosystem-based livelihoods and boost productivity, while reducing environmental impact and harnessing ecosystems and biodiversity protection for economic development and climate resilience.

Download the *African Shifts* report, explore the data and read the Storylines here:

 africa.climate-mobility.org



gccm@un.org



twitter.com/ACMI_Africa



africa.climate-mobility.org



www.linkedin.com/company/acmi-africa/



Global Centre for
Climate Mobility

Design and Layout: Ink Design Publishing
Solutions, Cape Town.