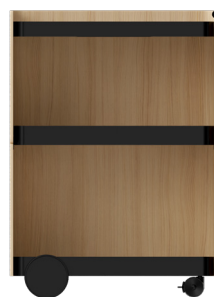
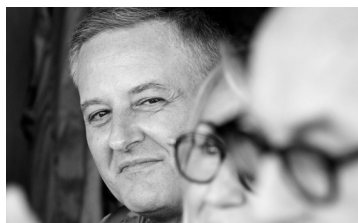


Troy Medium



Troy High

Troy Trolley

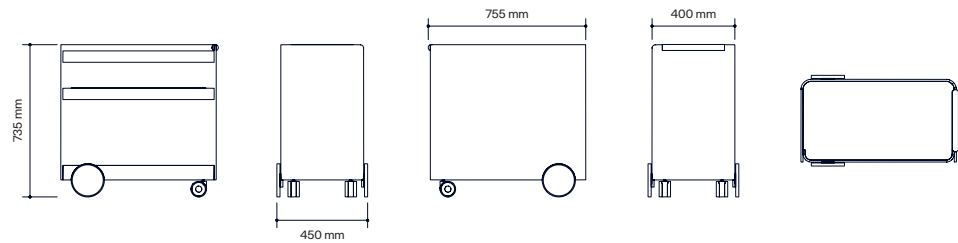


Design Mario Ruiz

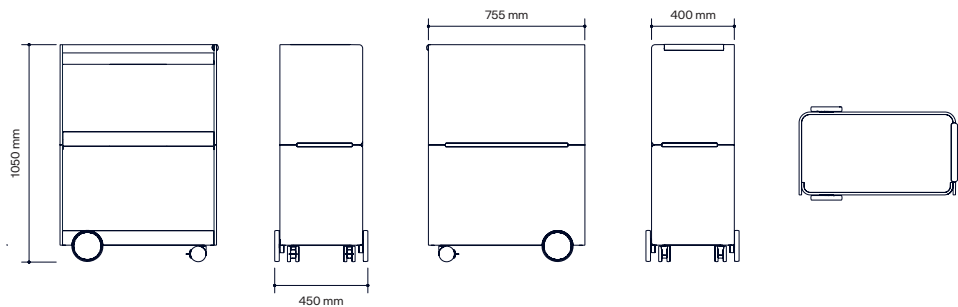
Troy is a versatile trolley that blends into any setting while always ready to serve. Its calm form with pressed wooden fronts – a craft Edsbyn has mastered for over 100 years – gives it a timeless expression.

Discreet from one side, inviting from the other, Troy balances function and aesthetics in one flexible piece. With a high podium version, it also supports spontaneous talks,


making it a natural fit for today's hybrid spaces. Carefully rounded corners add warmth and a friendly character, while durable materials ensure it will last for years to come.



Troy Medium



Troy High

Configurable	Assembly	Body	Shelves	Handle	Frame	Wheels	Certificate
Veneer & finish Configure at edsbyn.com	Pre-assembled	Molded veneer	Veneer	Solid wood	Black powder-coated steel	Black ABS plastic with a rubber edge	 Möbelfakta



Climate-Smart

All materials and surface treatments are approved for public environments with high wear and tear, and will last for many years without the need for maintenance.

Certified according to Möbelfakta

Technical quality standards for sustainability, stability, safety and for surface resistance. Environmental standards for materials and products.

ISO Certified Production

Edsbyverken is certified according to quality and environmental management standards ISO 9001 and ISO 14001.



Color & Trim

Customized furniture with extensive configuration possibilities is our specialty. Edsbyn's selected palette, Color & Trim, showcases a small selection of the color schemes offered for standard orders.

All materials are carefully selected with environmental sustainability as our top priority. All finishes offered in Color & Trim are sustainable and suitable for environments with heavy daily wear and tear.

Explore the complete selection of materials and colors available for you to choose from at my.edsbyn.com



Edsbyn Factory

The secret of our success is the ability to change and adapt. What began in 1899 as a small carpentry, grew in to be one of the largest furniture factories in the Nordics. Between 1934 and 1984, we produced wooden skis for the Ministry of Defence, Olympic gold medal winners, and families. From the waste material, we manufactured pin-back chairs, which became well-known and cherished in Swedish homes.

As one of Sweden's oldest furniture companies, with roots in Edsbyn, we can proudly say that we have played a part in making the label Swedish Design synonymous with good form and function.