

Constance Lake First Nation

Lands Management and Data Collection

September 30, 2014



Background of Constance Lake

- Constance Lake First Nation (CLFN) members are of "Cree, Oji-Cree and Ojibway descent
- Our ancestors inhabited the Kenogami, Kabinakagami, Nagagamisis, Pagwachuan, Fushimi, Pledger Lake, Little Current, Drowning, Ridge, Albany, Nagagami, Flint Lake, Klotz Lake and Shekak River systems
- Original settlement is a place we call Mamawmattawa also known as English River Post. In English it is translated as “Where the Rivers Meet or Where the People Gather”

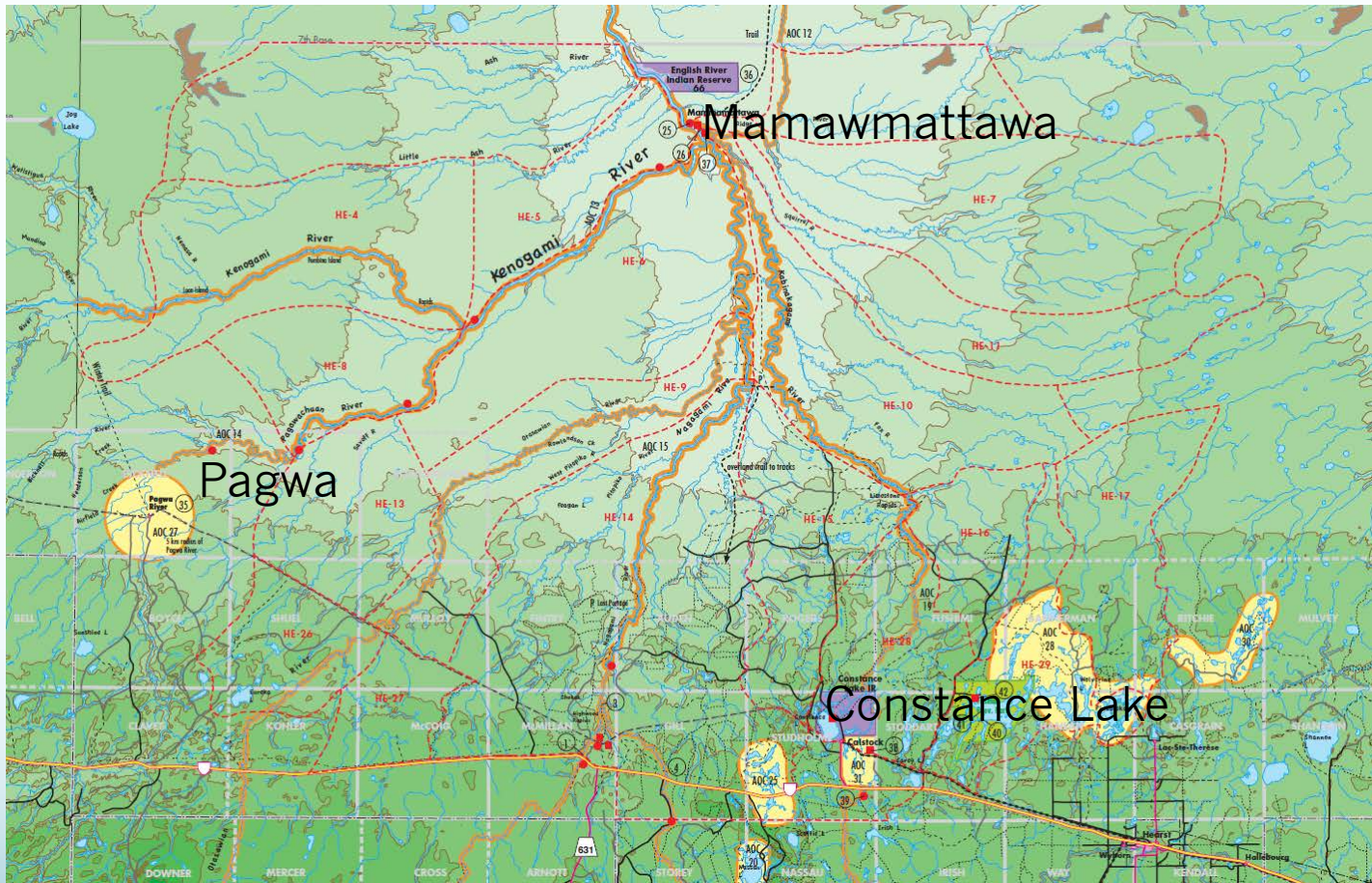


Background con't

- The first contact with the new settlers occurred in the mid 1750's with fur traders. These new settlers set up a trading post at Mamawmattawa.
- Between 1925-1940, many families from Mamawmattawa migrated to Pagwa River.
- By May 1940 the majority of the Mamawmattawa members resided at Pagwa River as the Mamawmattawa reserve was "uninhabitable".
- Employment opportunities at a Calstock sawmill led to another community migration from Pagwa River to our current location, Constance Lake First Nation.
- CLFN was established in 1945



The Migration Trail





Community Gatherings





Constance Lake





History of Data Collection

- ATK collection - the community began this the early 1970's.
- In the early 1980's CLFN worked with an archeologist named Dr. Pollock.
 - Unfortunately CLFN lost a lot of this valuable information due to a fire of the storage building that destroyed all material.
- 1990s – Edith Moore and Charles Baxter Sr.
- 2000s – Sarah Allen, Stanley Stephens and Roger Wesley
- 2010s – Bertha Sutherland and Charlene Neegan



Methods

- Elder interviews (individually and Elder Working Groups)
- Community focus groups
- Youth engagement sessions
- One-on-one interviews
 - Recorded via audio, video, paper
 - Digitized map values and paper documents
 - Back up data



Information management

- We are currently in the process of coding all of our information in a metadata table and identifying information gaps.
- ATK stays with CLFN:
 - All traditional knowledge used to support the Land Use Planning process will remain the intellectual and legal property of CLFN and will only be shared with the public at the sole discretion of the First Nation community.

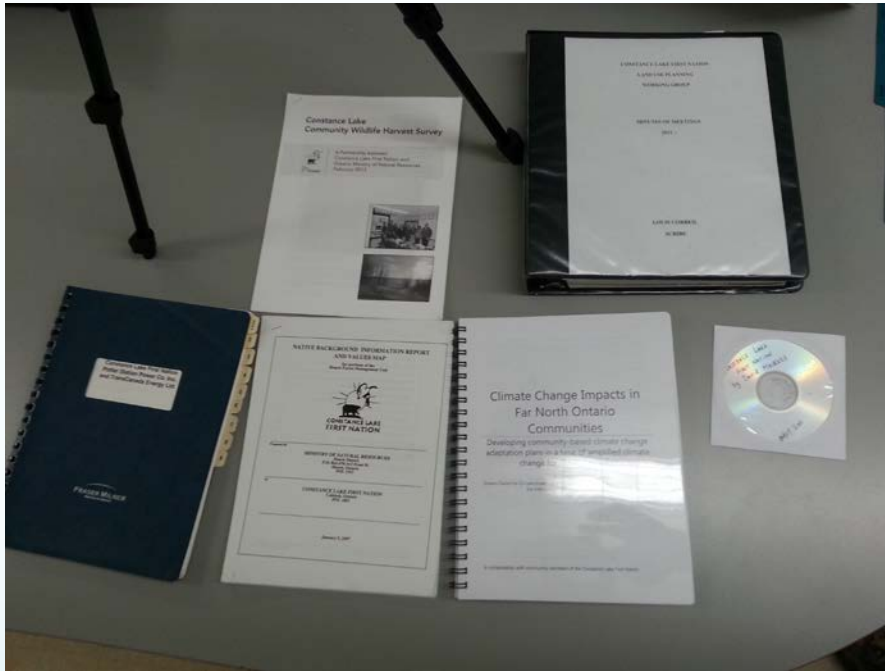


Safeguards

- We always ensure our information is protected.
- We have drafted agreements on how the information will be shared and utilized.
- We are cataloguing existing data and ways of backing up and storing data (i.e. on your server, camera & video, recorder, USB or black box and written documents...etc.)



Examples



Written documents



Server



Camera,
video



USB or
external
harddrive



Goals

- Building Community Capacity
- Developing an Educational product to insert into our school curriculum to be taught to our children for the next 7 generations and so on so our knowledge is passed onto our greatest assets for generations to come
- Developing a Sharing/Tourism product to market our way of life and our lands to the rest of the world via internet and web marketing
- Developing all Sustainable Development Projects on our Traditional Territories to generate a greater diverse Natural Resource Development economy
- Developing our Self-Governance structure to manage all activity's on our Traditional Territories and to fulfill our rightful place as Stewards of our Lands now and onward



Educational Product

- To create an interactive digital product that could be utilized in the classroom
- To create links to maps, sites, stories, actions and historical documents
- To create a tool that will add to the curriculum of CLFN history and storyline for all age groups within our educational system
- To learn about Aboriginal Rights such as hunting, fishing, trapping and gathering as well as our values and standards as depicted from our way of life with the **LAND**



Sharing/Tourism Product

- To create a product that can be utilized on the internet and web to promote the CLFN storyline and their traditional territories
- To create a marketing tool to promote our Aboriginal way of life and our traditional lands to the world to increase tourism and for sharing our values systems with the rest of the world
- Part of applying a key component of our way of life, **SHARING** our knowledge with those who want to learn our way of life and what we know of and how we understand sustainability and management of our lands



Sustainable Natural Resource Development

- CLFN is a pro-development community provided the development is sustainable and environmentally secure
- We currently are looking at developing several mines, commercial forestry, hydro energy projects, and tourist camps in our northern territories
- These projects will without doubt change the landscape forever so we must be vigilant to ensure all is done to the highest standard possible to ensure environmental security and project sustainability
- The infrastructure requirements will be enormous thus major planning and studies will be required to get it right so that all projects or developments are less impacting to our lands and our way of life.



Self-Governance

- Through opening up our northern territories to economic development there will be an enormous amount of wealth created through developing our Natural Resources
- It is CLFN intent to assert its authority over its lands through profit sharing agreements with developers, revenue sharing agreements with other levels of governments on taxation, royalties, permits, etc...
- CLFN will also be a primary benefactor to all development projects as we aim to service all developments with our business partners and local business'
- Through capturing a piece of the wealth CLFN will now be able to afford to govern and assert its authority on its lands





Funding Sources

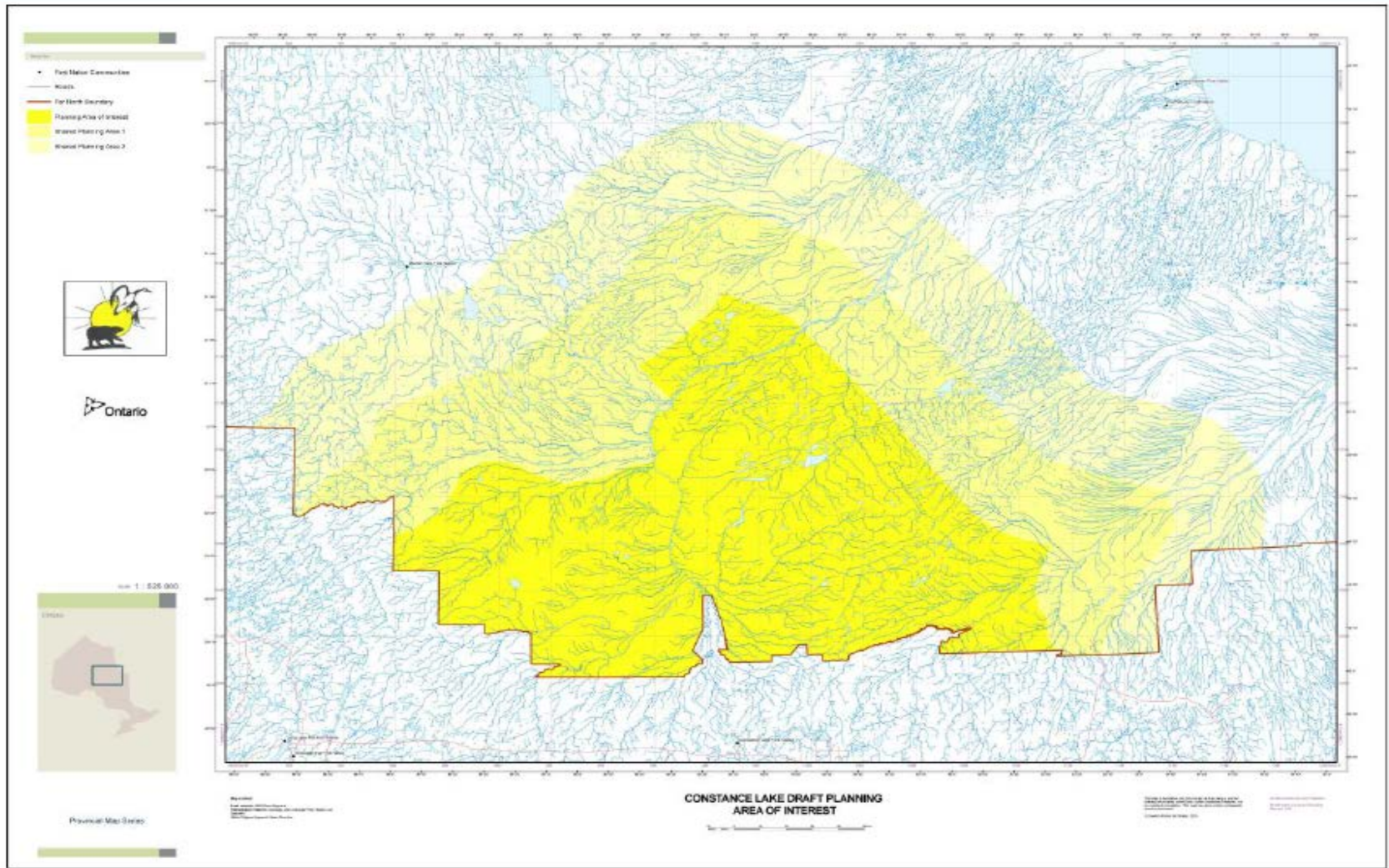
- Funding
 - Far North Branch – MNRF
 - Hearst Forest Management Inc.
 - Species at Risk – MNRF
 - CODA (Canada Ontario Resource Development Agreement Funding)
 - Forestry Futures Trust - MNRF



Next steps

- TOR has been completed
- Analysis and drafting plan (2014-15)
 - Analysis of data
 - Community member input
 - Draft plan, reviews
- Finalize and approve
 - 2015 Chief and Council
- Implementation, review and amendment as needed

Area of Interest



Shared Areas

- Core area
 - Area of interest where CLFN is the sole First Nation with influence over decision making.
- Shared Planning Area #1
 - The area where CLFN and appropriate neighbouring communities have shared influence over decision making.
- Shared Planning Area #2
 - The area where CLFN has less planning influence over decision making than appropriate neighbouring communities, would like to be informed and involved in planning discussions with neighbouring communities.

Draft Planning

- Community Engagement to:
 - Identify Management Partners and Parameters
 - i.e. First Nations, MNRF, MNDM, MOE etc...
 - Identify protection objectives
 - *i.e. sacred sites, spawning areas, burial sites etc....*
 - Identify economic opportunities
 - *i.e. forestry, mining, hydro development*
- Goal is to build a plan that is based on community consensus

Utilizing ATK

- ATK will be vital to our planning process
- Our plan will be built upon knowledge of the past and of the future.
- Guided by the community



Meegwetch

Presented by:

Bertha Sutherland, FNLUP Coordinator

Charlene Neegan, Resource Development Officer

Roger Wesley, Project Advisor

bertha.sutherland@clfn.on.ca

(705) 463-2405

charlene.neegan@clfn.on.ca

(705) 463 -4511 ext. 231

wesleyrog@hotmail.com

(705) 373-2116

<http://www.clfn.on.ca>