



BASELINE ENVIRONMENTAL STUDIES

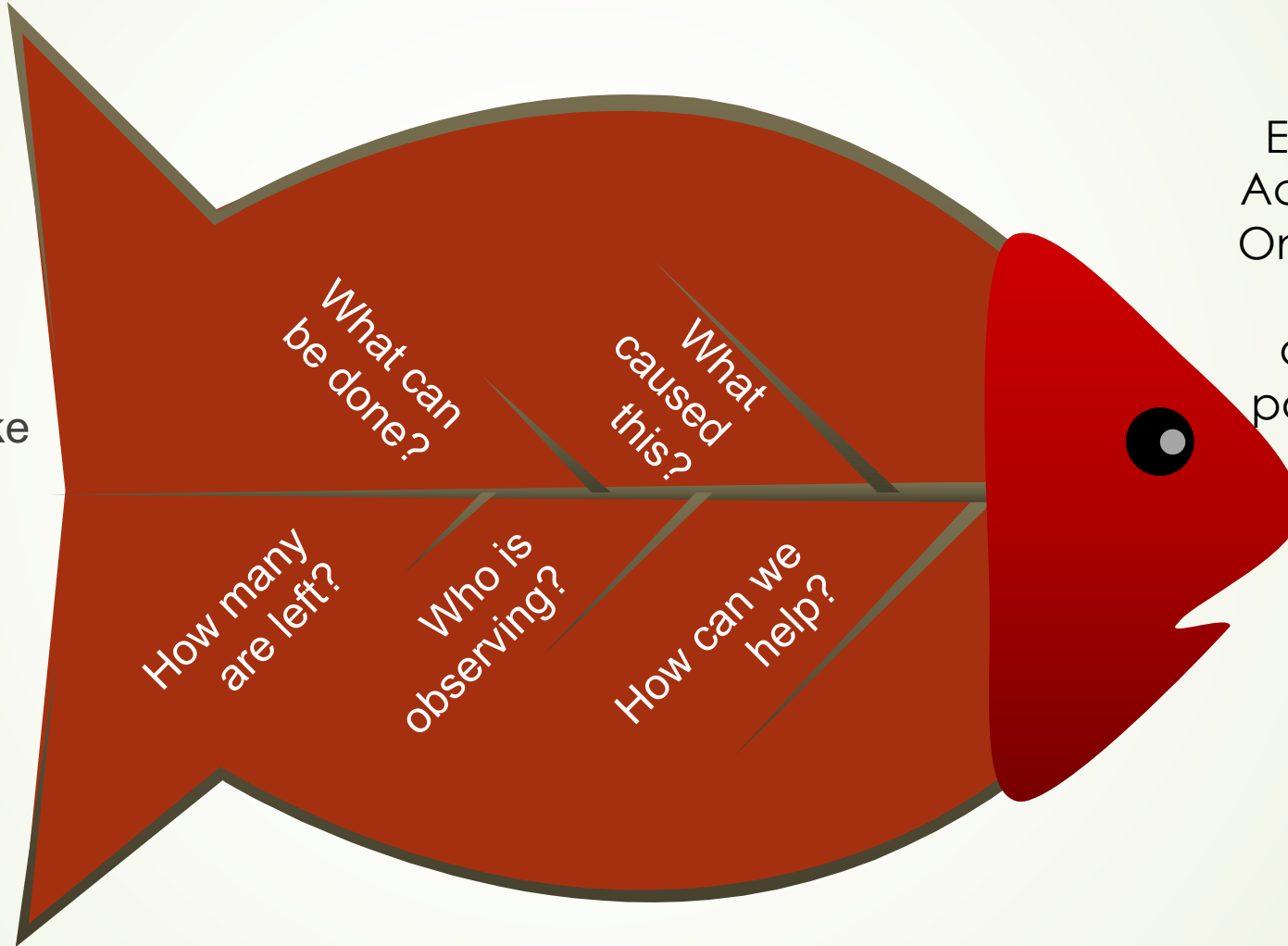
Presenters: Gord Parker; Four Rivers'
Environmental Projects and Training Officer
& Mark Bell; Aroland First Nations' Economic
Development Officer

ASFAR Lake Sturgeon Research

Ontario Lake Sturgeon and its Current Status

Special Concern
(Southern Hudson Bay/James Bay Population)

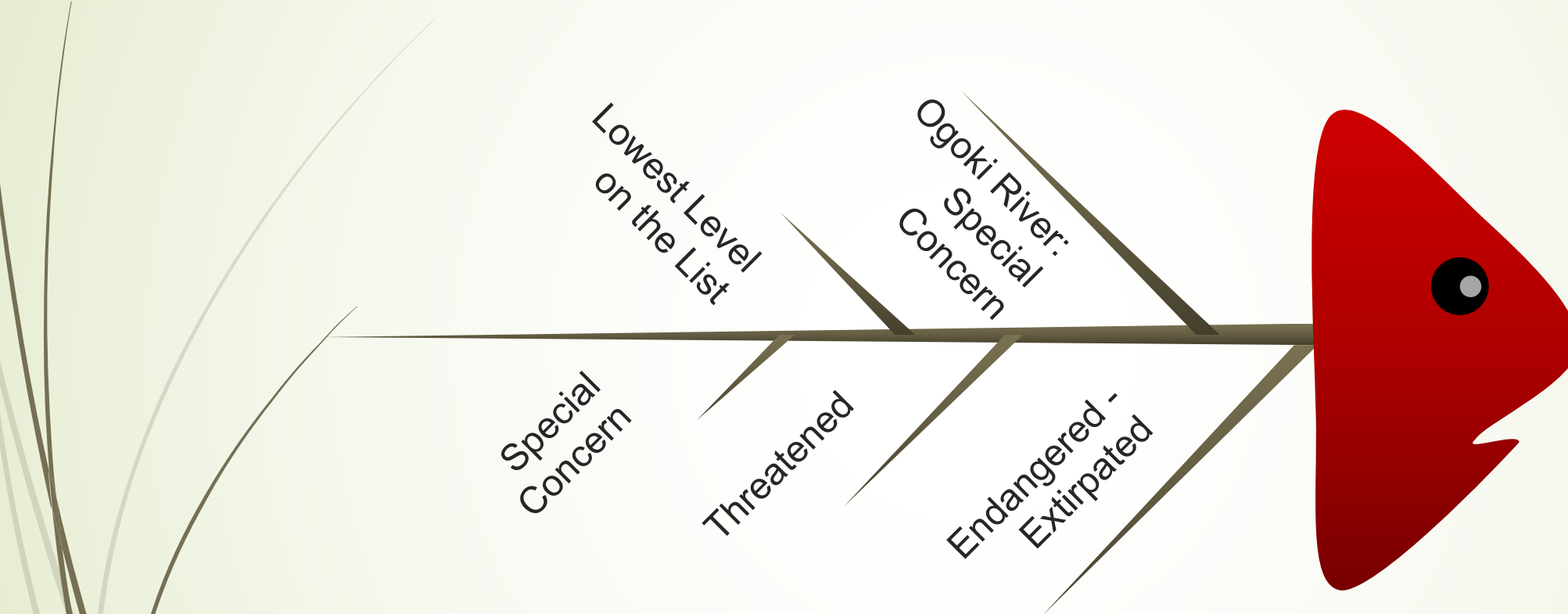
Threatened (Great Lake – Upper St. Lawrence River Population, Northwestern Ontario Population)



Date added to the Species at Risk in Ontario List

Endangered Species Act took effect in 2008. On September 10, 2009 the species was divided into distinct populations and listed as threatened and special concern.

What Does this Status Mean?



Priority must be given at any level of concern.

Past...Present...and Future

Plans formed to proceed

Communication about action to protect and preserve

Four Rivers was contacted

A proposal was written

Proposal was submitted and a conservation partnership was built

After the species was listed as Special Concern more interest arose about the longevity of the Ogoki Lake Sturgeon

Research was needed and a science based program became more valuable

ASFAR Lake Sturgeon Research Plan Developed

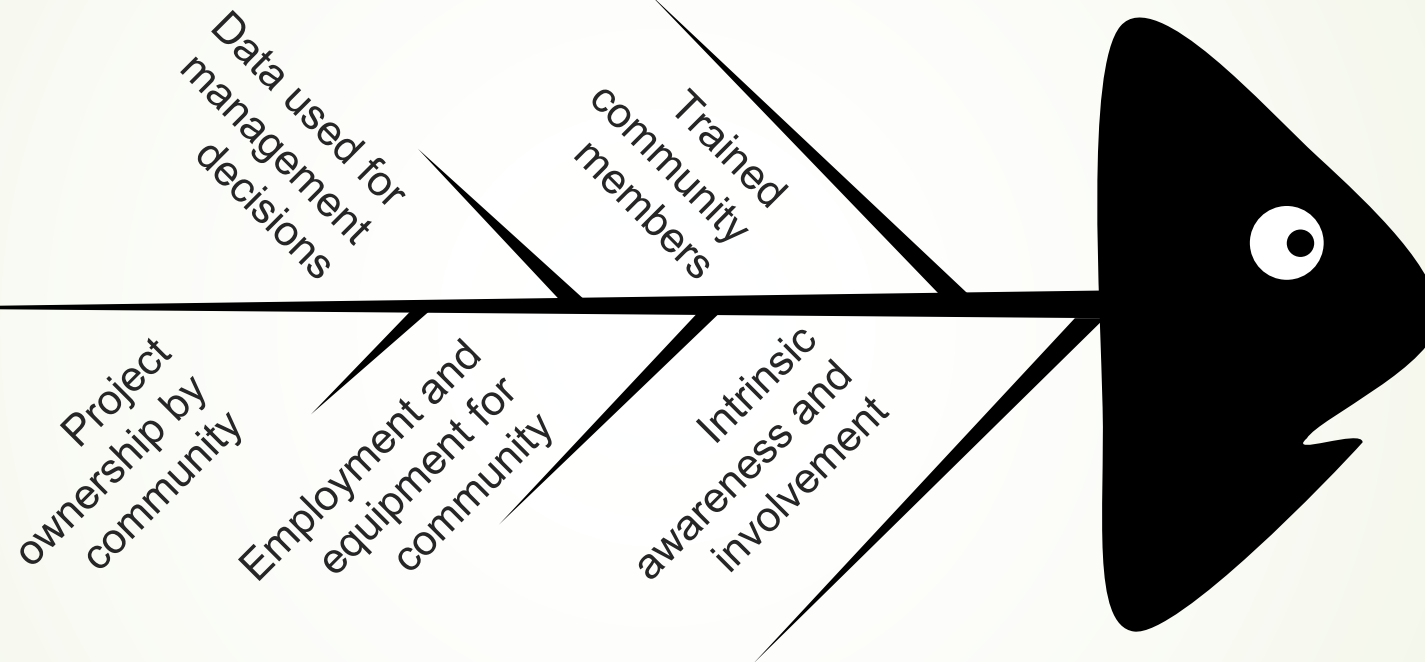
Community members
hired and trained

Extensive science based
research program
operated by community
with assistance from Four
Rivers



Photo taken by Randy Wesley of Aroland FN

Project Outcome and Objectives



MNRF Protocol used to compare results with surrounding river systems and to make informed decisions about management practices.



Other Studies: Past and Present

Acoustic Monitoring for Avian SAR



Photos taken by Gord Parker of Four Rivers Environmental Group

Numerous SAR Recorded



Some Avian SAR Include:

Bald Eagle
Common Night Hawk
Whip-poor-will

Four Rivers' research found
SAR Species beyond
recognized range maps



Avian SAR Research

- * Involved 3 different Matawa communities
- * Created training for all Matawa communities
- * Employed 4 individual community members from 3 communities

Upcoming Wolverine Study

- * Another collaboration with communities and its members
- * Community training, employment, and real research involvement



Photo taken from hamburgermaze.com

What's the Plan?

- * Strategize appropriate places to deploy traps

- * “Hair Snare” traps to be built and deployed



Photo taken by Robert Long/Woodland Park Zoo



Photo taken by Audrey Magoun

What's the Planned Outcome?

- * To identify individual wolverine presence and density
- * Individual identification will be determined by DNA analysis and trap camera photographs

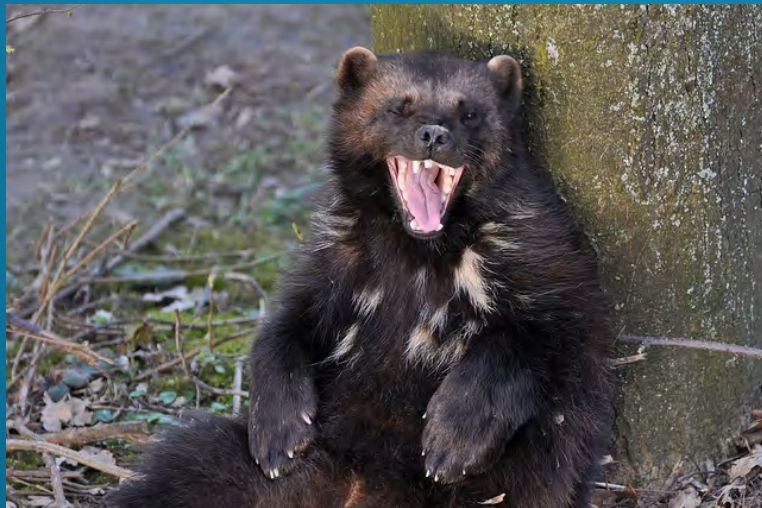
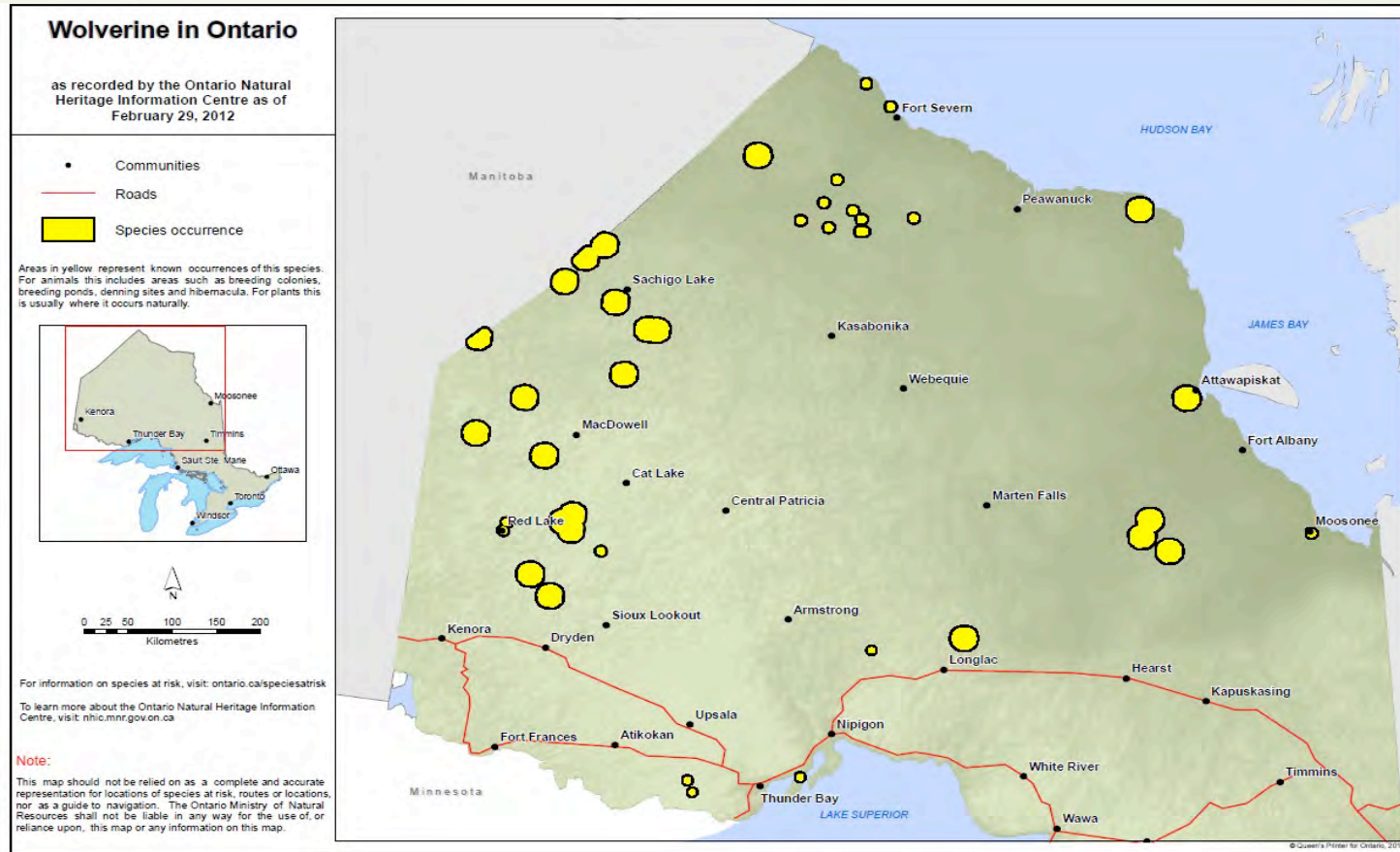


Photo taken by Truss & Zoo; GaiaZOO



Photo taken from
<http://wolverinepedia.zaxtor.net/WolverinePedia.htm>



ontario.ca/speciesatrisk



Current Wolverine Range Map

* Another goal is to expand the range map to prove more presence on Matawa traditional territory



Photo taken by Gord Parker



Legacy Mine Closure

Golden Hope Mine Shaft



Photo taken by Gord Parker

Environmental Inspections and Clean Up

Local community members teamed up with Four Rivers to take environmental samples and organize a shaft closure



Photo taken by Chris Hamblin; OGS

Planning, Training, Collaboration, and Environmental Assessment

After planning a trip to the mine shaft with OGS personnel, and training community members, we flew to the site to investigate the environmental conditions and develop a proper shaft closure plan.



Photo taken by Chris Hamblin; OGS



Canadian Mining Journal • April 2014

Final Evaluation and Closure Plan

No indications of negative environmental impacts. Decision was made to use a stainless steel cap for long term closure. Local community members will be hired to clear a helicopter launch pad and clear the area around the shaft for permanent closure.