



---

**Far North Land Use Strategy**  
*Ministry of Natural Resources and Forestry*  
*Far North Branch*

October 2014

# Presentation Outline

- What is Community Based Land Use Planning?
- Why do we need a Far North Land Use Strategy to help with Planning?
- What will be in the Strategy?
- What are the Next Steps?
- How will Communities be involved?



# Background/Overview

- Many First Nation communities in the Far North are working with the Ministry of Natural Resources and Forestry (MNR) to prepare community based land use plans.
  - plans establish which areas will be set aside for long-term protection and which areas are suitable for sustainable economic development
- MNR has also begun preparing a **Far North Land Use Strategy**.
- The Strategy will assist joint planning teams in preparing their community based land use plans.
- Once in place, the Strategy must be taken into account by joint planning teams.
- First Nations knowledge and perspectives are key to developing the Strategy.

# Far North of Ontario Ongoing Community Based Land Use Planning Approved Community Based Land Use Plans and Approved Terms of Reference

## LEGEND

- Provincial Park
- Conservation Reserve
- Far North Boundary
- Major Road
- Railway
- Community
- First Nation Community

## STATUS OF PLANNING

- Approved CBLUP
- Approved Terms of Reference

## AREAS OF INTEREST (AOI) FOR PLANNING

- Deer Lake AOI
- Marten Falls & Webequie Shared AOI
- Eabametoong & Mishkeegogamang AOI
- Marten Falls AOI
- Webequie AOI
- Wawakapewin AOI
- Constance Lake AOI
- Approved CBLUP

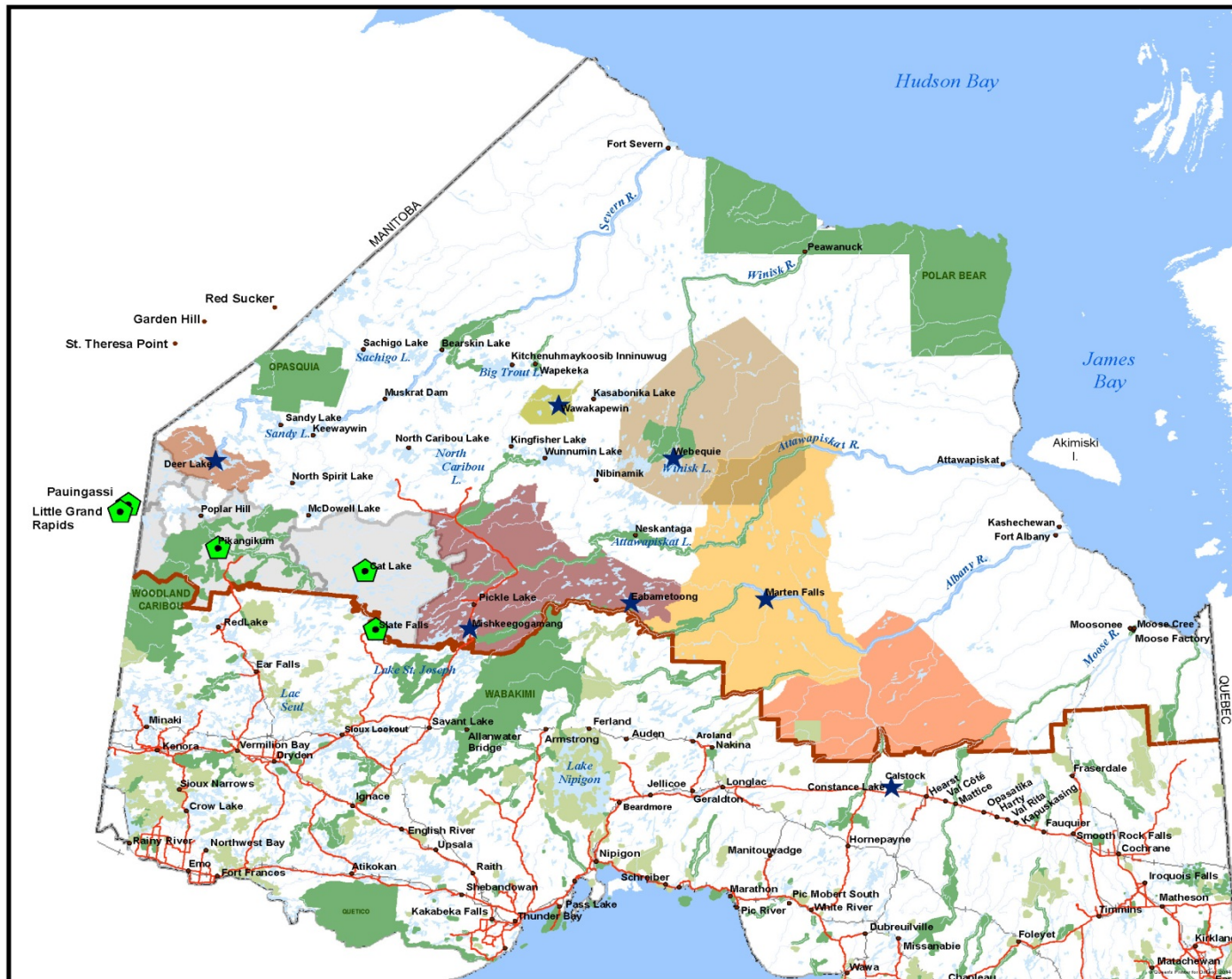
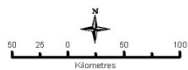
**Draft - Subject to frequent change**

Produced by Ministry of Natural Resources,  
Far North Branch  
5520 Hwy 101 East, P.O. Bag 3020,  
South Porcupine, Ontario P0N 1H0

Sources:  
Base Data: OMNR NRVIS,  
Water: MTO Lakes and Rivers,  
Far North Boundary: Far North Branch,  
Projection: OMNR Lambert Conformal Conic

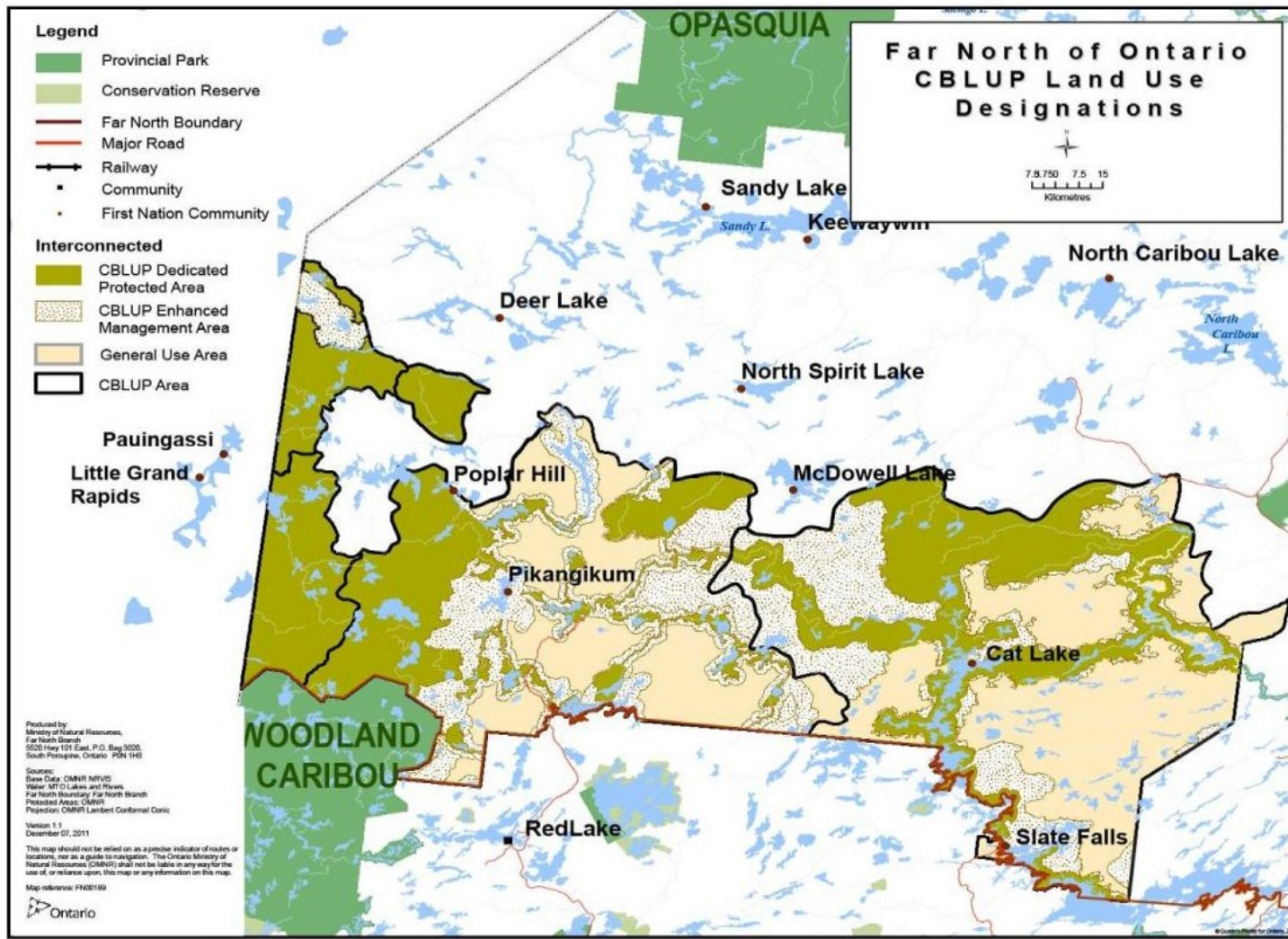
This map should not be relied on as a precise  
indicator of routes or locations, nor as a guide  
to navigation.  
The Ontario Ministry of Natural Resources (OMNR)  
shall not be liable in any way for the use of,  
or reliance upon, this map or any information on this map.

Version 10  
September 11, 2014  
Map reference: FNB235





# Completed Community Based Land Use Plans



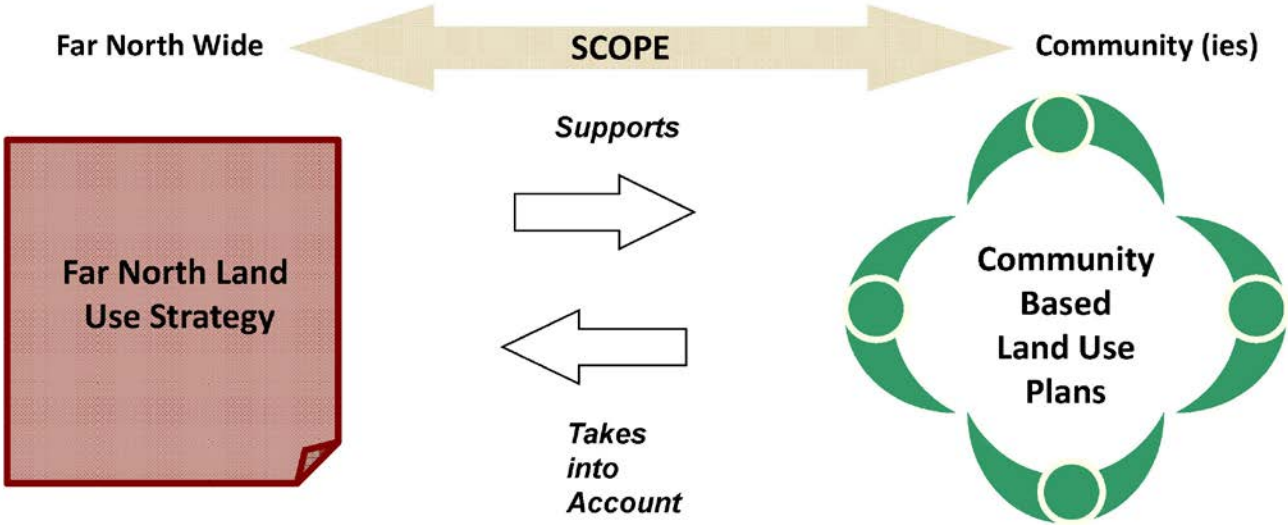
# What is the Strategy?

- will provide guidance on planning matters of interest across the entire Far North (e.g, water, roads and transmission lines, caribou)
- The guidance will help joint planning teams consider these topics as they prepare community based land use plans
- will also describe different types of land use designations **that planning teams can use** to set out the broad priorities for that area, and the land uses that are permitted and not permitted
- will not make decisions on land use – decisions are made by the joint planning team through the community based land use plan



# How will the Strategy relate to Community Based Land Use Plans?

## Land Use Planning under the Far North Act



## The Strategy will Contain:

Guidance on broad-scale land use planning topics, which could include:

- Cultural and Heritage Values
- Biological Diversity
- Water
- Cumulative Effects
- Climate Change
- Areas of Natural Resource Value for Economic Development
- Infrastructure
- Tourism
- Protected Area Design



## The Strategy will Contain (cont'd):

Policies on:

- Categories of land use designations
- Categories of protected area designations
- Requirements and process for amending plans

# An Example from the Discussion Paper...

## On the topic of **Water**:

- Water is vital to life.
- What do we know about water and watersheds in the Far North?

## Possible **Principle Statements** in the FNLUS:

- Provide a high level of protection for water features that are necessary to maintain ecological and hydrological processes and functions.
- Watersheds provide a meaningful scale for consideration of water in land use planning.

## Possible **Guidance** to Planning Teams in the FNLUS:

- Identify sensitive water features and identify land uses that are compatible with protecting their important hydrologic functions
- Where appropriate, consider applying a protected area designation along a waterway.
- Consider existing and proposed activities in areas upstream of the community, and what impacts those activities may have on water, when combined with new proposed land uses.

# An Example from the Discussion Paper...

## On Areas of Natural Resource Value for Economic Development:

- What are the resource based economic development opportunities in the Far North?
- What do we know about forestry, mining potential, water power potential etc. in the Far North?

## Possible **Principle Statements** in the FNLUS:

- Plan for resource-based economic development opportunities that will support community participation and provide social and economic benefits, while also sustaining the environment and cultural values on the land.

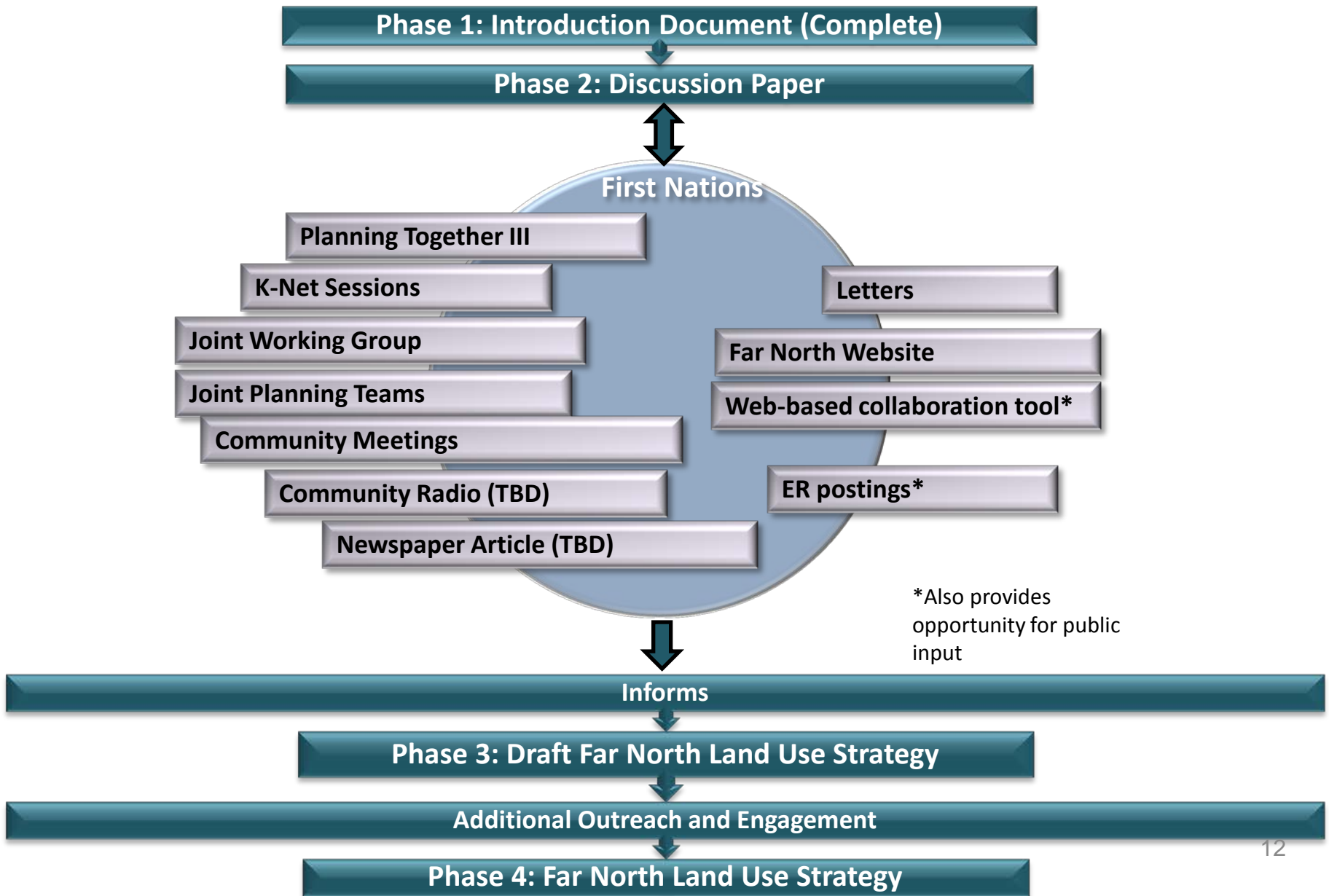
## Possible **Guidance** to Planning Teams in the FNLUS:

- Engage in dialogue with neighbouring communities to discuss mutual goals and objectives regarding planning direction on resource use.
- Provide direction that would enable access to potential economic development activities, both within and beyond the planning area, now and into the future.

# Developing the Strategy

- ✓ **Stage 1: An Introduction to the Far North Land Use Strategy (Completed)**
  - was sent to each First Nation community in the Far North in December 2013.
  - was also posted on the Environmental Registry on the Ontario government internet site.
  - it explained the purpose of the strategy and described the 4 stages to develop it.
  
- ❖ **Stage 2: Discussion Paper (Current)**
  - sets out suggestions for guidance that could be included in the Strategy.
  - posted on the Environmental Registry September 25, 2014; copies being sent to each community
  - The information in the paper can be discussed with MNRF at joint planning team meetings
  - MNRF is pleased to attend community meetings
  - Communities can also provide comments through the Environmental Registry and an Online Collaboration Tool
  
- **Stage 3: Draft Strategy** – will be prepared using the Discussion paper, and the input and comments we receive. Will be shared with First Nation communities and posted on ER for comment Spring 2015 to get more input.
  
- **Stage 4: Far North Land Use Strategy** – will be available later in 2014 for Joint Planning Teams to use in preparing community based land use plans.

# First Nation Engagement





For additional information or questions on the  
Far North Land Use Strategy please contact:

Elaine Hardy, Senior Policy Advisor, Far North Branch,

Phone: 416-314-0340

Email: [elaine.hardy@ontario.ca](mailto:elaine.hardy@ontario.ca)

Or

Julie McArdle, Program Manager, Far North Branch

Phone: 807-475-1273

Email: [julie.mcardle@ontario.ca](mailto:julie.mcardle@ontario.ca)