
What to do about tires?

Ontario Tire Stewardship (a.k.a. Rethink Tires)

“OTS works with our network of Ontario Stewards, Collectors, Haulers, Processors and innovative Recycled Product Manufacturers to ensure a more sustainable future.”



Hagersville 17-day Fire, 1990, therecord.com

How OTS works

- Your community can register with OTS as a collection agent for tires.
- Transport of tires is at no charge to the community.
- Community received 88 cents per light truck tire, and up to \$3.05 per large machinery tire.
- Contact OTS at rethinktires.ca

Rethink Tires Wrap-Up

Established in 2009, to help redirect tires from the landfill to recyclers.

Ontario government has ordered OTS to wrap up operations at the end of 2018. This followed an investigation by the Toronto Star alleging misuse of OTS funds.

Plans for a follow-up program not been announced.

Best practices for Managing Tires On-Site

- Piles no higher than 3m, and containing only scrap tires.
- Separate individual piles and keep clear of buildings and brush.
- Direct runoff water away from tires.
- Lay tires flat and stack like a pyramid, for more stable piles.

Sources

1. *Solid Waste Management for Northern and Remote Communities*, Environment and Climate Change Canada, 2017
2. *Participant Manual: Natural Attenuation Landfill Training*, OFNTSC, 2017
3. Ontario Tire Stewardship, rethinktires.ca
4. The Toronto Star, thestar.ca

Electronic Waste, Used Tire Diversion & On-Site Management



Presented by:

Stu Finn, *Project Advisor*
Shibogama Technical Services
stuf@shibogama.on.ca
(807) 737-2662 ext. 2255
shibogama.on.ca

Electronic Waste

- Waste electronics contain toxic materials that can contaminate soil and water.
- E-waste is becoming a greater concern with the increasing use of technology.
- Ontario Electronic Stewardship collects e-waste at no cost to the community.
- Communities can either register as ongoing collectors or hold one-off events.
- OES pays \$150-235 per tonne of electronic waste.



Image credit: Curtis Palmer, via Flickr
Original image has been cropped

In order to become an e-waste collection site, contact OES at:

<http://ontarioelectronicstewardship.ca/>.



Best practices for Managing E-Waste On-Site

- Clearly marked area.
- Materials should be protected from the elements (e.g. in a shipping container).
- Runoff directed away from storage area.
- Area should be free of other types of waste.

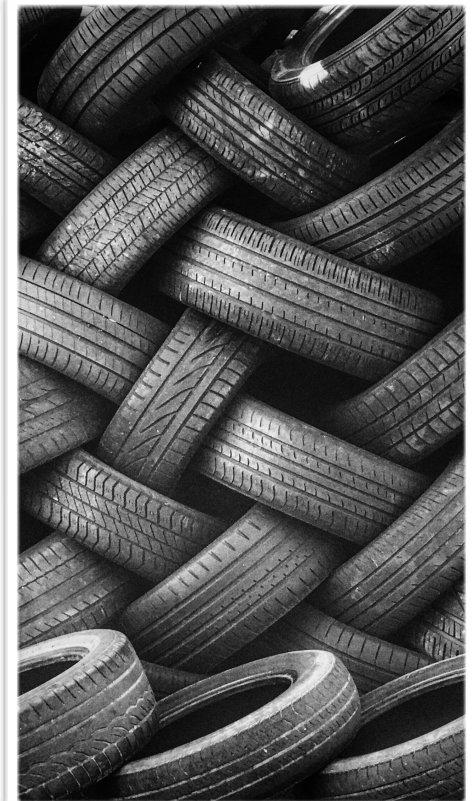
Transition to a new e-waste program in Ontario

- With the new Waste Free Ontario Act (2016), a new program will be announced. The new program should provide the continuity of service for this program. Details are yet to be provided on this.

Used Tires

Why divert tires?

- Fire hazard.
- Physical hazard (from unstable stacking).
- Take up limited space in landfill.
- Uneven settling.
- Aesthetics.
- Mosquito breeding.



Original photo by Imthaz Ahamed,
via Unsplash