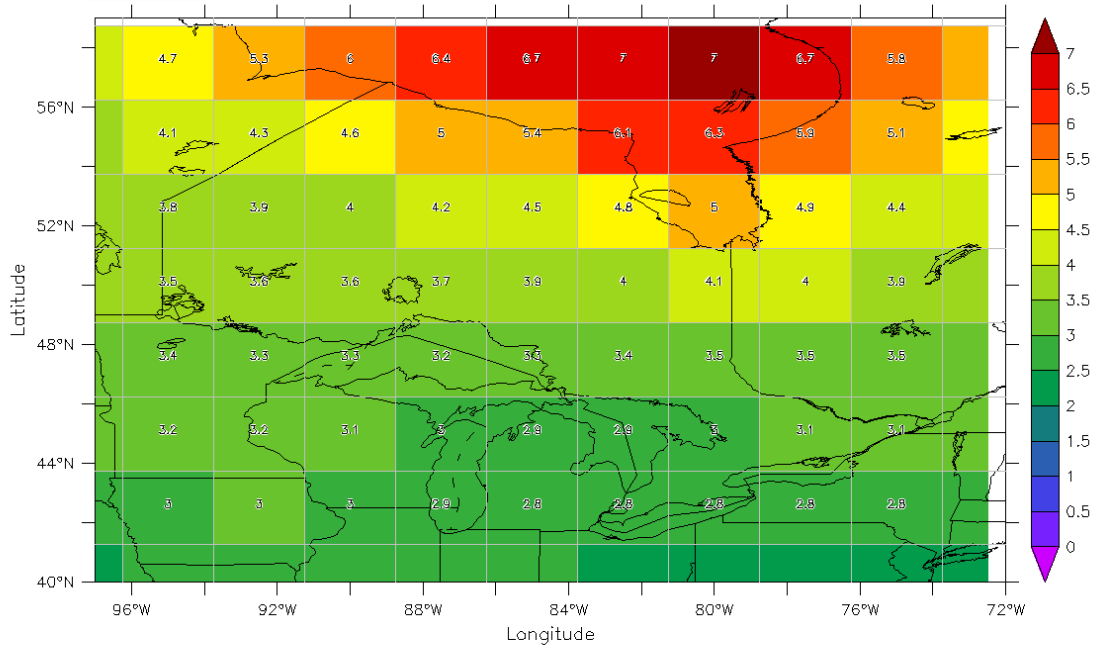




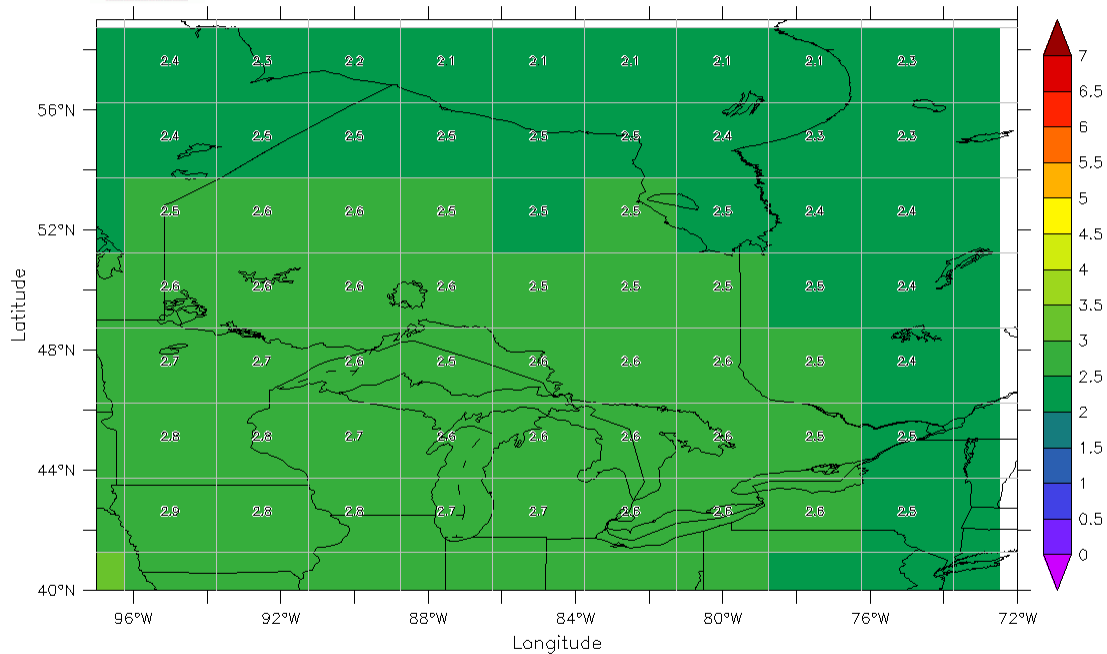
Common Grid - Composite of Models
Mean change from (1961-1990) to (2041-2070 or '2050s')
Winter - Medium - Change in Air Temperature at 2m (°C)



<http://ccds-dscc.ec.gc.ca/?page=ensemblescenarios-2050s>

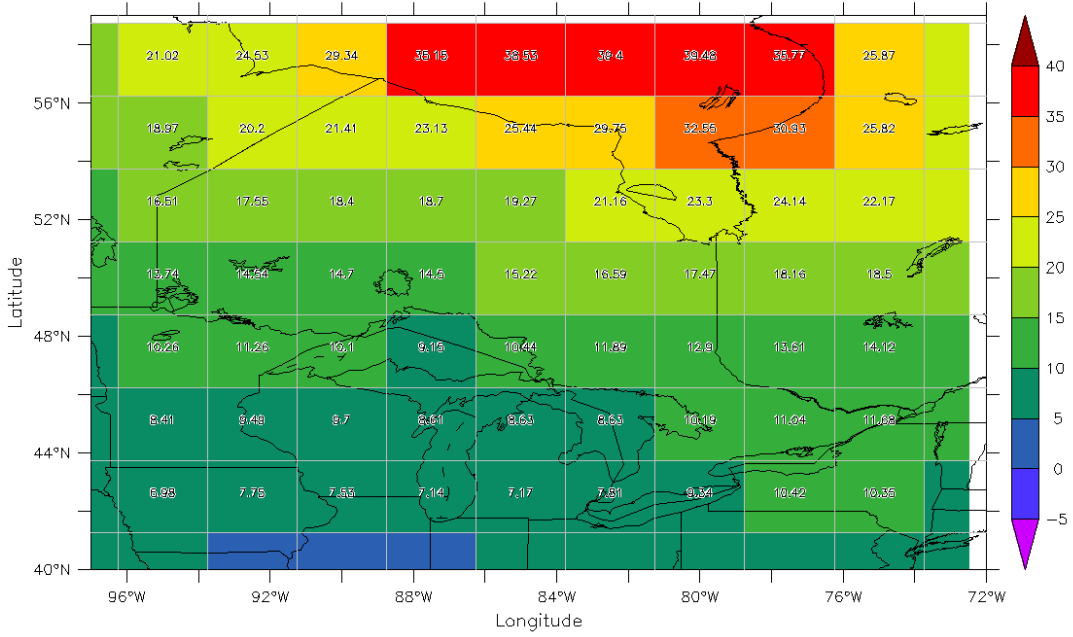


Common Grid - Composite of Models
Mean change from (1961-1990) to (2041-2070 or '2050s')
Summer - Medium - Change in Air Temperature at 2m (°C)





Common Grid - Composite of Models
Mean change from (1961-1990) to (2041-2070 or '2050s')
Winter - Medium - Change in Precipitation (%)



Common Grid - Composite of Models
Mean change from (1961-1990) to (2041-2070 or '2050s')
Summer - Medium - Change in Precipitation (%)

