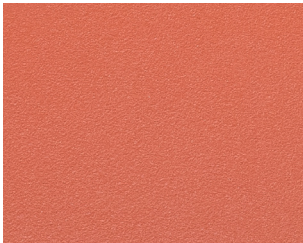
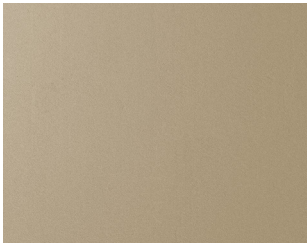


All Forms+Surfaces powdercoat colors have been formulated to be ultra-durable for improved long-term wear and resistance to weathering. Our powdercoat colors are also anti-graffiti, allowing marks from paint, permanent markers, and dirt to be easily removed. All standard powdercoat finishes are no-VOC.

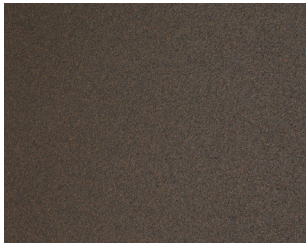
COLOR TEXTURES



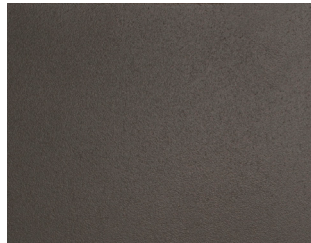
CLAY TEXTURE



MUSHROOM TEXTURE



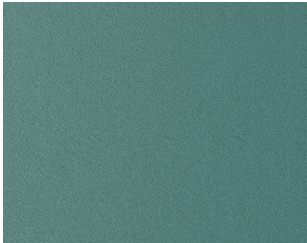
DARK CORTEN TEXTURE



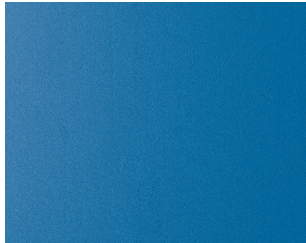
SLATE TEXTURE



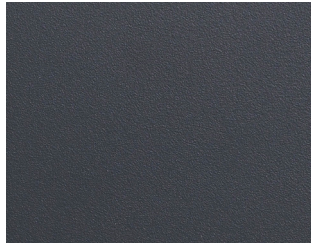
COOL GREY TEXTURE



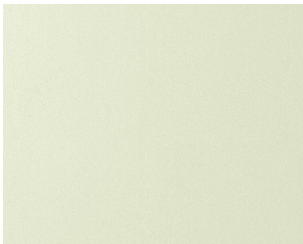
LAGOON TEXTURE



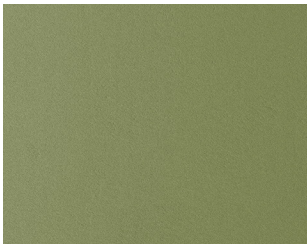
DENIM TEXTURE



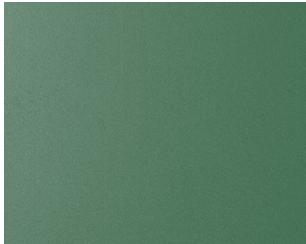
INK BLUE TEXTURE



LICHEN TEXTURE



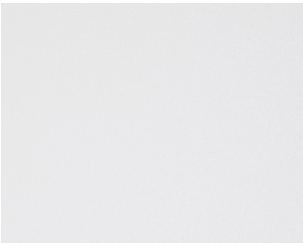
OLIVE TEXTURE



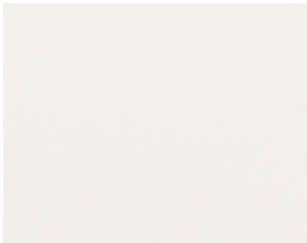
JADE TEXTURE



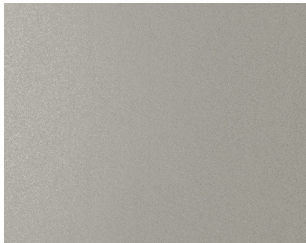
MOSS TEXTURE



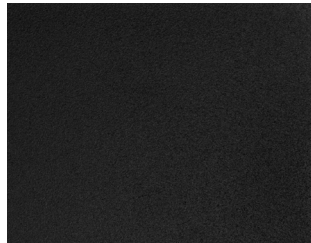
WHITE TEXTURE



ALABASTER TEXTURE

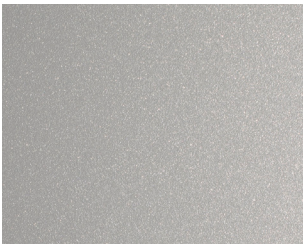


ARGENTO TEXTURE

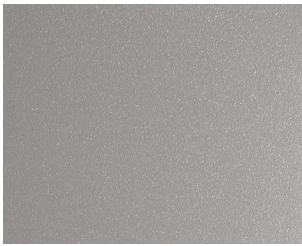


BLACK TEXTURE

METALLIC TEXTURES



SILVER TEXTURE



ALUMINUM TEXTURE



DARK BRONZE METALLIC TEXTURE

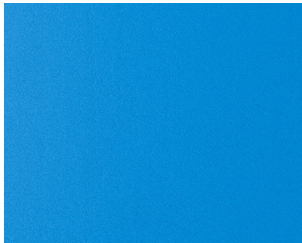


DARK GREY METALLIC TEXTURE

RECYCLING TEXTURES



LIME TEXTURE

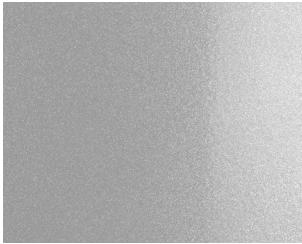


AZURE TEXTURE

GLOSS COLORS



BLACK GLOSS



BRIGHT SILVER GLOSS



SLATE GLOSS

NOTE: Due to the inherent nature of metal castings, gloss powdercoats are not offered for cast components.

PRETREATMENT

For improved performance, all aluminum castings go through an environmentally friendly pretreatment process. This pretreatment increases the adhesion of the powdercoat finish and creates a barrier that is highly resistant to environmental corrosion without the use of hazardous ingredients.

FORMS+SURFACES POWDERCOAT FINISHES

Our powdercoat finishes have been specially formulated with dirt-repelling properties and for significantly prolonged gloss retention, which decreases the frequency of cleaning and maintenance. For long-term performance, our powdercoat finishes have high resistance to environmental factors such as UV rays and humidity, industrial pollution, and other atmospheric components. For improved performance, all aluminum castings go through an environmentally friendly pretreatment process. This pretreatment increases the adhesion of the powdercoat finish and creates a barrier that is highly resistant to environmental corrosion without the use of hazardous ingredients.

WEATHER TESTING

Accelerated Weathering

TEST	STANDARD	TEST PERIOD	RESULT
Gloss Retention	DIN EN ISO 16474-2	1000H	>90%
Condensation Test	DIN EN ISO 6270 CH	1000H	no infiltration, no bubbles
Salt Spray	DIN EN ISO 9227 AASS	1000H	no infiltration, no bubbles
Mortar resistance	DIN EN ISO 12206-1 (section 5.9)	24h	easily removable without residues

Florida Weathering

TEST	LOCATION	TEST PERIOD	RESULT
Gloss Retention	Florida, 5° south	3 years	>50%

POWDERCOAT MAINTENANCE

TYPE	CLEANING METHOD	FREQUENCY
general maintenance	water and sponge	once a year or as needed
grease	alcohol or surfactant; allow time to break down residue before removing	as needed
lime stains	diluted solution of vinegar essence (9.6%) dissolved 1:1 with water	as needed
mortar residue/cement spray	diluted solution of vinegar essence (9.6%) dissolved 1:1 with water	as needed
silicone stains/adhesive residue	silicone remover	as needed

NOTE: The following powdercoat colors should be cleaned with water and a sponge only, once a year or as needed: Aluminum Texture, Argento Texture, Dark Bronze Metallic Texture, Dark Grey Metallic Texture, Silver Texture and Bright Silver Gloss.

Do not use: Acids, lyes, strongly alkaline cleaners, abrasive cleaners, abrasive aids or cleaners that contain solvents, thinners, acetone or chlorinated hydrocarbons.

LEARN MORE

Our Resource Management team is dedicated to staying on top of environmental issues around the world. Wherever you are, you can rely on us to help you navigate any challenges a project may pose.

For product-specific environmental data, visit forms-surfaces.com and click on the Environmental Data tab on any product page. To learn more about our company's environmental commitment and programs, visit the [Environmental Sustainability](#) section of our website. If you would like additional information on our Environmental Management System or our company environmental initiatives and policies, please feel free to contact our Sustainability Team at green@forms-surfaces.com.