

High Current Contacts



High Current Solutions

Scale 1:1



FK-891

60A (160A)

Air cooled & compact

FK-133

50A

Long lifecycle

FK-679

220A

High current load

FK-052

100A

Solid construction



FK-893.04

90A (120A)

Air cooled

FK-893.04.S

90A

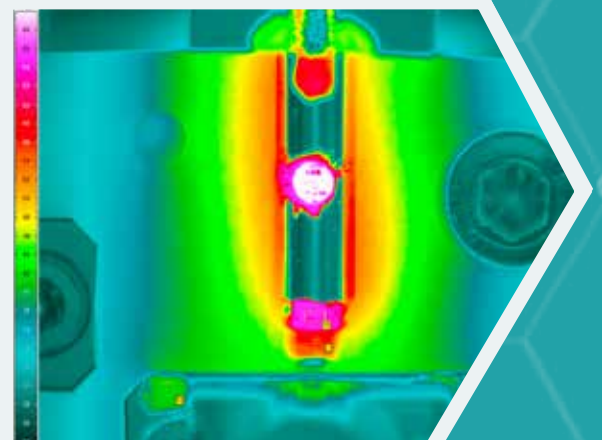
With sense

Simulation Software

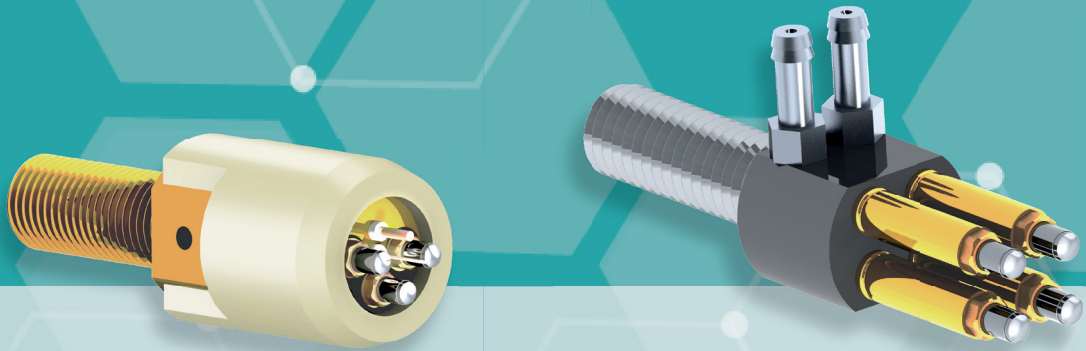


In collaboration with the ZFW - Zentrum für Wärmemanagement (Centre for Thermal Management) we have developed a simulation program.

Visualization of the theoretical current load, cycles and expected temperature response of contacts.

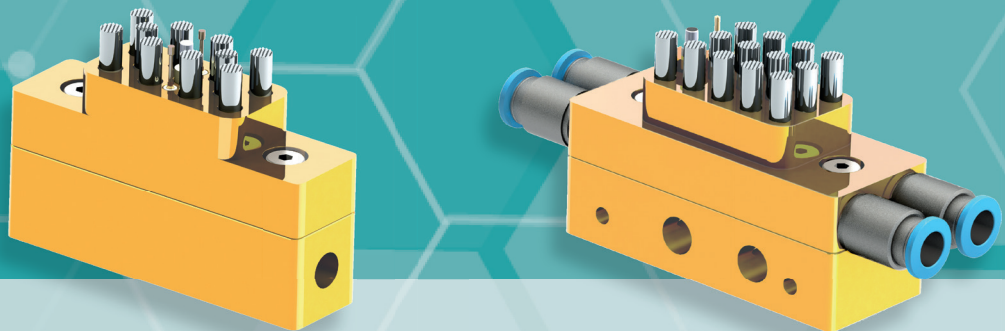


Modular Systems



In the **Screw-In series**, a customised assembly is created from the FK-891. The threaded probes are easy to replace. Contact Heads can be provided with a temperature sensor and/or an insulated contact pin. The maximum current load is scalable and depends on the number of high-current contacts used.

In addition, the air cool design of the FK-891 allows the temperature control of the contact module. These modules are characterized by a high current density.



The **PermaFlow modules** are characterised by a long service life and a robust design. Based on the requirements, the modules can be air cooled, equipped with a temperature pin and/or an insulated contact pin.

The module with temperature sensor and sense pin can carry up to 600 Amps while the air-cooled version has a capability of 1500 Amps.

FIXTEST Prüfmittelbau GmbH
Zeppelinstraße 8
78234 Engen, Germany

+49-7733-5056-0
contact@fixtest.de
www.fixtest.de

