



<https://www.scientificamerican.com/article/how-to-use-masks-during-the-coronavirus-pandemic/>

The Comparison of State vs. National Legislation Regarding Covid-19

An Opinionated Editorial of the Regulations of Corona Virus by Zoe



<https://www.healtheuropa.eu/covid-19-first-comprehensive-estimates-from-mainland-china/99000>

TRUMP ADMINISTRATION ADAPTATIONS



The Trump Administration has introduced a three phase plan for the United States to reenter society in Covid safe conditions. Below is an Outline of the Plan:

1. Phase One in summary is the idea of vulnerable people isolating and quarantining along with household members who may potentially put them at risk, avoid social interactions of 10 or more and try not to travel unless it is essential. Workplaces and large establishments that have yet to close should encourage the return of staff in surges. Bars and restaurants that were closed should remain closed.
2. Phase Two encourages the social gatherings of less than 50 people when attendees can maintain social distancing, and vulnerable people and families should stay home. Non-essential traveling may resume and workplaces, schools, bars, restaurants and gathering areas can reopen.
3. Phase Three states that at risk citizens can return to social settings, workplaces resume completely unrestricted, hospitals and nursing homes can allow visitors, and schools reopen. [TRUMP ADMIN LINK](#)

It is found that this plan can be very damaging to society and scientific research as found in the article “How Trump Damaged Science – and Why It Could Take Decades to Recover.” This article talks about the significant death toll of over 200,000 U.S Citizens due to the negligence of the Pandemic guidelines set by the leader of our country. “Over the past eight months, the president of the United States has lied about the dangers posed by the coronavirus and undermined efforts to contain it; he even admitted in an interview to purposefully misrepresenting the viral threat early in the pandemic (<https://www.nature.com/articles/d41586-020-02800-9>).”



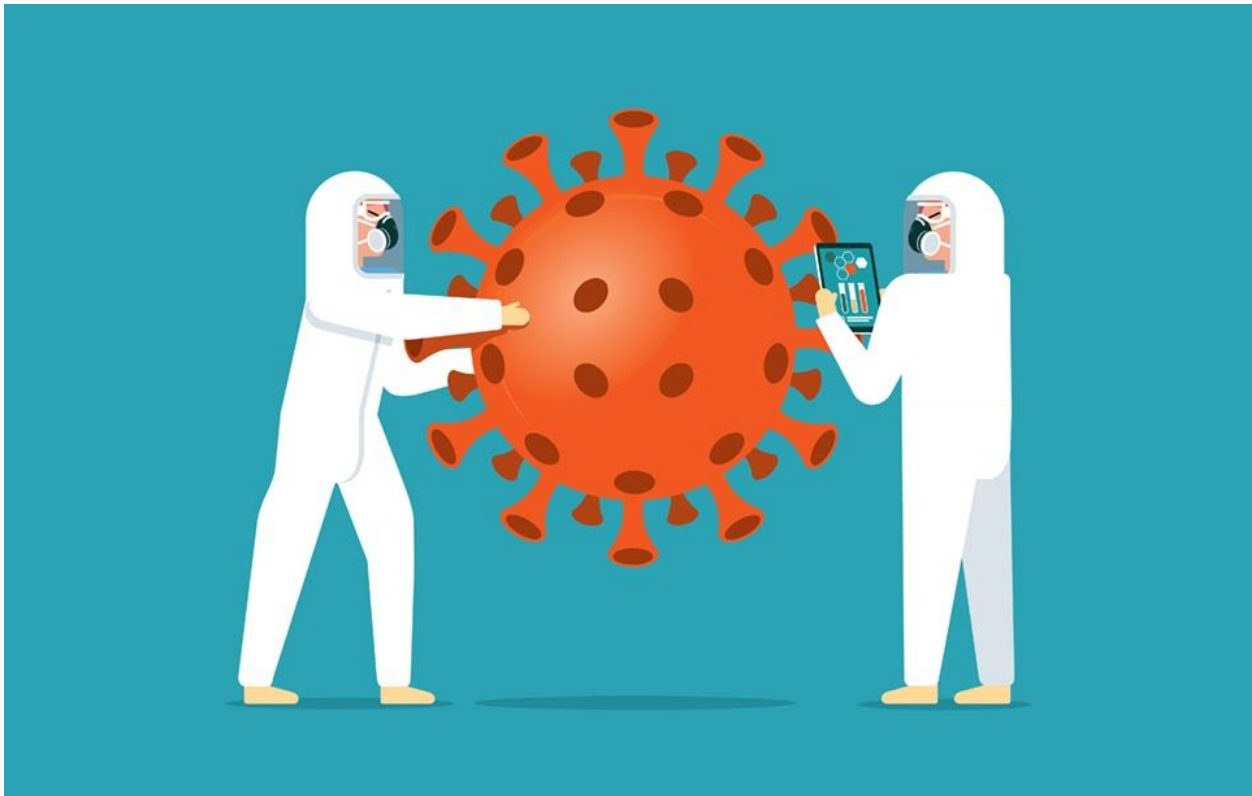
<https://www.corporatecomplianceinsights.com/4-dimensions-risk-fitness-covid-19/>

MASSACHUSETTS STATE REGULATIONS



Charlie Baker and the State of Massachusetts have mandated many regulations in response to the outbreak of COVID-19. Below is a synopsis of the regulations regarding common life in Massachusetts.

- Travel: Travel has been completely restricted during the first wave and when it did resume there are forms and monitoring that must be done upon entrance to Massachusetts. This is ensuring no traveling infectors are coming to the state.
- Healthcare: All emergency staff will be easily accessible to the public during this time. There are committees to join to avoid copays and deductibles. This is inclusive of many people and helps ensure safety not based on social standing, socioeconomic class or other defining identities.



<https://www.fi.edu/blog/artificial-intelligence-and-covid>

-
- Reopening: Lower risk communities begin readapting to society following standard distancing and masking procedures while big businesses and corporations reopen slowly with staggered staffing, and at risk people stay home.
 - Education: Reopening of early learning facilities and some schools will occur in Phase 2 which is now for us, but must maintain distancing and masking regulations, and schools may close after infection is entered into the environment.
 - State and Local Government: There are resources for the state and local officials to contact help during this time to continue and be the best they can be while offering insightful and logical help to citizens during the pandemic. [MASS GOV](#) and [BAKER - POLITO](#)

These state mandated guidelines have been found to make Massachusetts one of the safer states for the majority of the pandemic, with occasional outbreaks, and has improved the likelihood of reopening.



<https://news.yale.edu/2020/03/31/we-ll-continue-until-we-find-answers-sequencing-covid-19-genome>

CONCLUSION



I feel that if there were a better national plan in place that enforces and regulates adaptations to life, like controlled environments, social distancing, masks, etc, that we as a country would benefit and possibly have better chances of completely reopening. Trump's Administrative 3 Phase plan never mentions masks, and does not enforce the social distancing concepts in public settings, as found in Massachusetts' State Regulations. It is important to highlight that Boston was a hot spot with rising cases during the first outbreak, and since the mandated masks and enforced social distancing the cases have lowered significantly, allowing Massachusetts to almost resume life as normal while still continuing to protect citizens.



Works Cited

- "Baker-Polito Administration Announces New Initiatives to Stop Spread of COVID-19." *Mass.gov*, 7 Aug. 2020,
www.mass.gov/news/baker-polito-administration-announces-new-initiatives-to-stop-spread-of-covid-19. Accessed 5 Nov. 2020.
- Bambina, Angelina. Crowd of Masked People. *Healtheuropa.eu*,
www.healtheuropa.eu/covid-19-first-comprehensive-estimates-from-mainland-china/99000/.
Accessed 5 Nov. 2020.
- Brown Bird design. Woman Wearing a Mask. *Scientificamerican.com*,
www.scientificamerican.com/article/how-to-use-masks-during-the-coronavirus-pandemic/.
Accessed 5 Nov. 2020.
- "COVID-19 Regulations & Guidance." *Mass.gov*, www.mass.gov/lists/covid-19-regulations-guidance.
Accessed 5 Nov. 2020.
- Illustration of Closed Sign on City with Coronavirus in the Air. *Corporatecomplianceinsights.com*,
www.corporatecomplianceinsights.com/4-dimensions-risk-fitness-covid-19/. Accessed 5 Nov.
2020.
- "Opening Up America Again." *Whitehouse.gov*, www.whitehouse.gov/openingamerica/. Accessed 5 Nov.
2020.
- Scientist Looking at DNA with Covid*. *Yale.edu*, Yale University,
news.yale.edu/2020/03/31/well-continue-until-we-find-answers-sequencing-covid-19-genome.
Accessed 12 Nov. 2020.
- Tollefson, Jeff. "How Trump Damaged Science — And Why It Could Take Decades to Recover."
Nature.com, 5 Oct. 2020, www.nature.com/articles/d41586-020-02800-9. Accessed 5 Nov. 2020.
- "Trump Administration Announces Initiative for More and Faster COVID-19 Testing in Nursing Homes."
HHS.gov, 14 July 2020,
www.hhs.gov/about/news/2020/07/14/trump-administration-announces-initiative-more-faster-covid-19-testing-nursing-homes.html. Accessed 5 Nov. 2020.
- Two Hazmat Suited Coronavirus Inspectors. *Fi.edu*, www.fi.edu/blog/artificial-intelligence-and-covid.
Accessed 5 Nov. 2020.
-

Two Masked People. Nebraska Med,

www.nebraskamed.com/COVID/how-to-wear-a-face-mask-dos-and-donts. Accessed 18 Nov. 2020.
